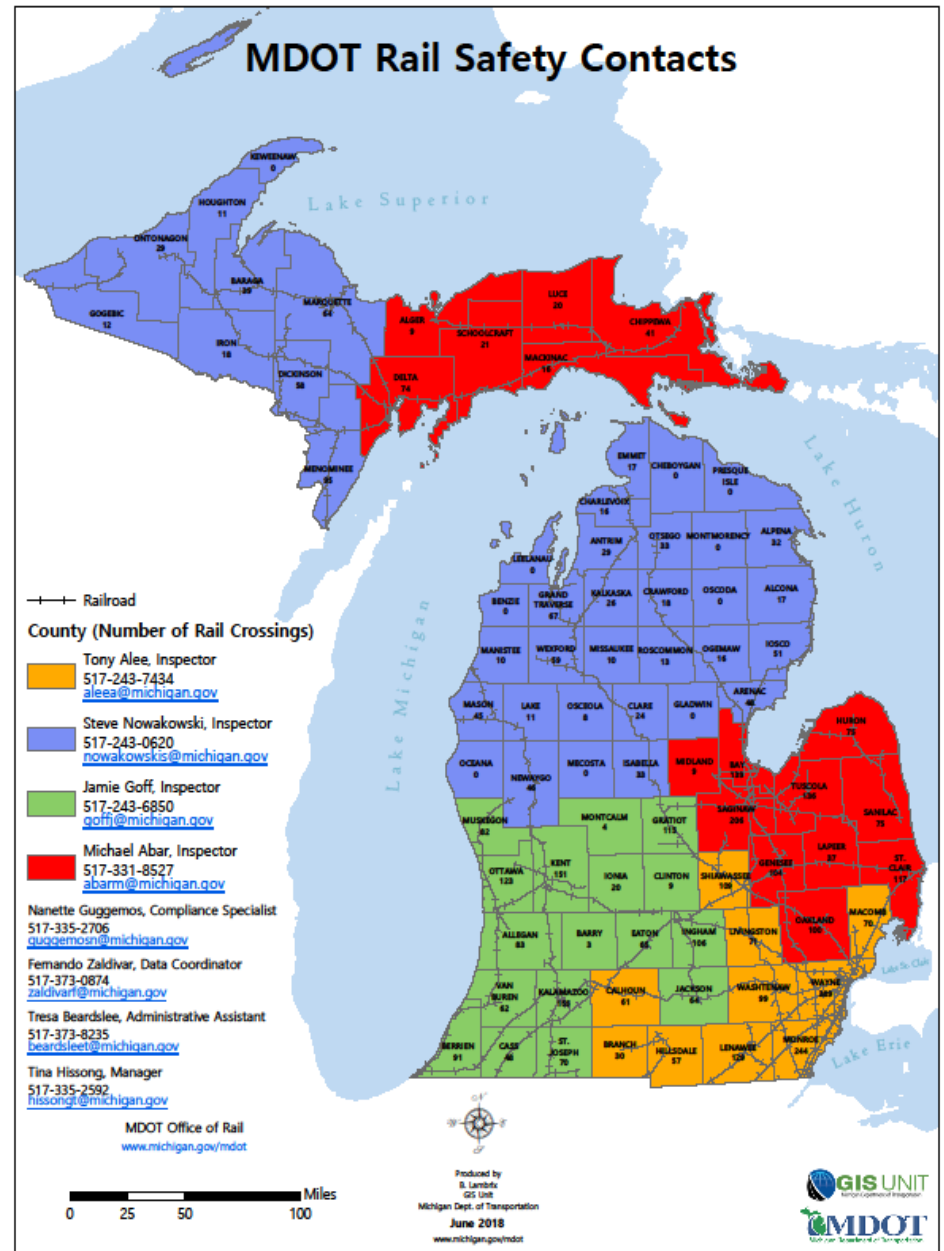




***Rail Safety Section – Regulatory  
Winter Operations Workshop  
October 17, 2018***

# Rail Safety Section Statewide Coverage

[www.michigan.gov/mdotrail](http://www.michigan.gov/mdotrail)



# ***RAIL SAFETY SECTION***

## ***WHAT WE DO***

- On Site Crossing Inspections Reviews, approximately 2,300 crossings per year.
- Diagnostic Study Team Reviews (DSTRs)  
For road projects, road authorities must submit an MDOT-1425 request form.
- Legal Orders & Enforcement.
- Assist Road Authorities and Railroads with crossing issues.



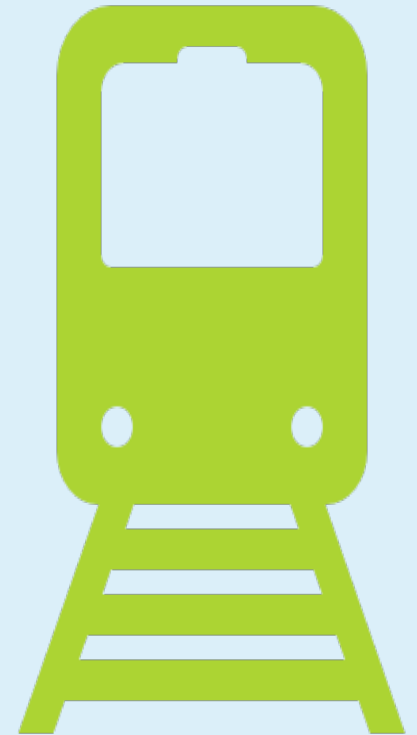
# ***TIPS FOR SNOW PLOWING/SALTING AT AND NEAR RAILROAD CROSSINGS***

- Reduce snowplow pressure, raise snowplow blades
- Do not pile snow on track, don't dump salt on track
- Avoid piling snow in front of railroad warning devices, bungalows and access roads
- Apply salt or gravel to crossing approaches to assist motorists in stopping
- When possible, clear-off pavement markings on the roadway approaches.



# ***WHEN AND HOW TO CONTACT US***

- **When a road or trail project will take place within 250 feet of a public railroad crossing.**
- **Safety concerns with a crossing.**
- **Rough crossing surfaces.**
- **Obtain the 1425 form from the MDOT Website ([Michigan.gov/MDOTRail](https://Michigan.gov/MDOTRail)) to request a Diagnostic Study Team Review.**



# ***WHAT IS A DIAGNOSTIC STUDY TEAM REVIEW (DSTR)?***

**A DSTR team consists of knowledgeable representatives from MDOT, the Road Authority and the Railroad.**

---

**The MDOT Railroad Safety Inspector facilitates.**

---

**The Team reviews the railroad crossing configuration, including the surrounding roadway, and the road/trail project specifics to determine if safety enhancements are warranted.**

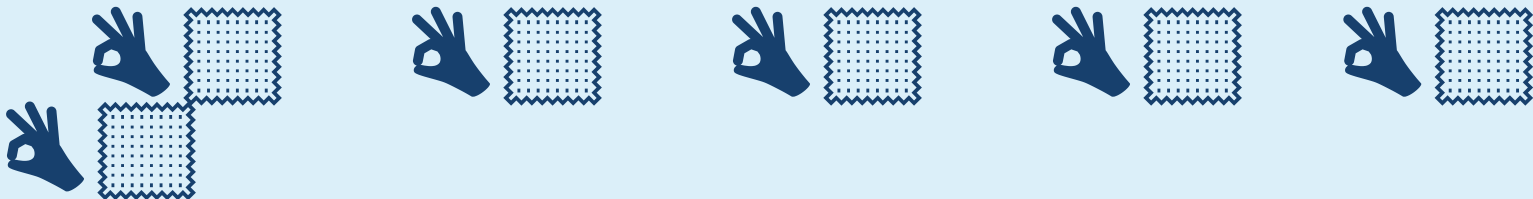
# ***DSTRS FOR ROAD PROJECTS***



- **Are held when changes will be made to the width, height or configuration of the roadway.**
- **When traffic flow or volumes will change during construction.**
- **If changes to the roadway will increase permanent traffic volumes.**
- **If crossing surfaces need to be addressed.**

# HOW CAN YOU HELP?

- Submit updated ADTs
- Provide updates on contact info.
- Participate in the DSTR process
- Complete ordered work on time
- **Read our correspondence!!**  
*(please)*





# SOMETHING GOOD TO KNOW

## *Exempt Sign Changes*

- School buses and vehicles transporting hazardous material can utilize Exempt signs at crossings.
- MDOT approval must be granted to use Exempt signs. (DSTR process)



R15-3P

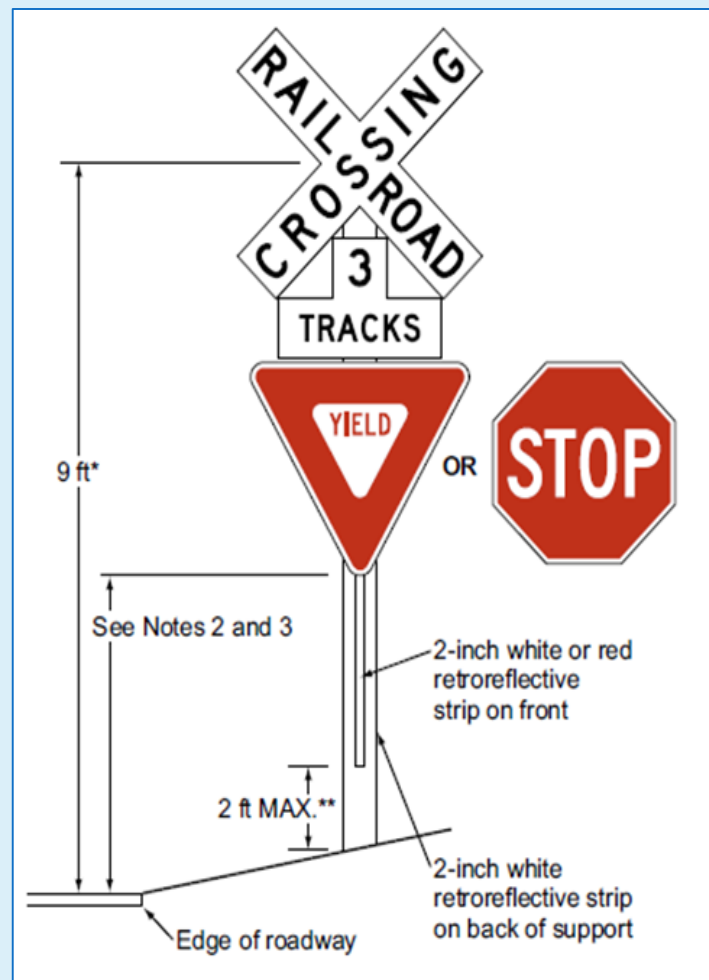


W10-1aP

# WHAT YOU NEED TO KNOW

## FRA Mandate:

- All crossbuck only crossings must have Yield or Stop signs in place by 12/31/2019.
- Road authorities are the responsible party to install the signs.





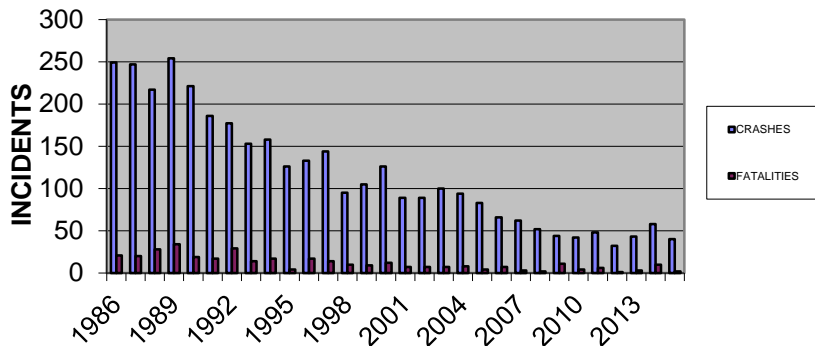
*Office of Rail: Local Programs  
Winter Operations Workshop  
October 17, 2018*

# LOCAL GRADE CROSSING PROGRAM WARNING DEVICE ENHANCEMENTS

- 4400 local crossings
- 2200+ with lights/gates
- 40-50 projects/year
- Average \$225,000

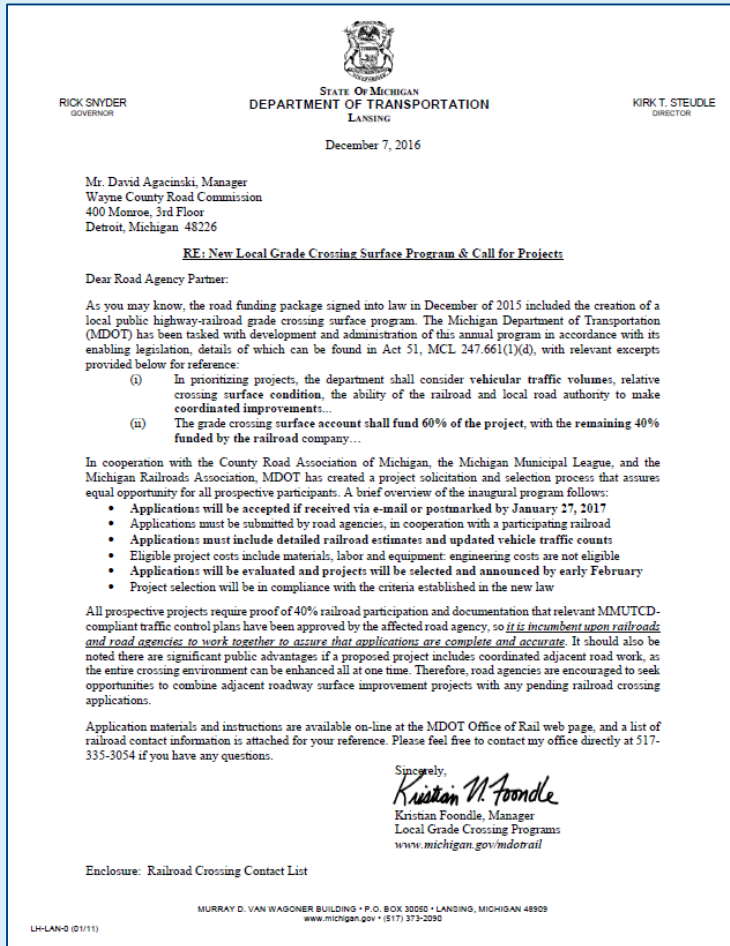


30-YEAR HIGHWAY-RAILROAD CROSSING  
CRASHES & FATALITIES



- Federal/State funding
- Record low crashes
- Record low fatalities
- 90% Crash reduction

# LOCAL GRADE CROSSING PROGRAM NEW SURFACE FUNDING



- \$3M Annual Program
- Eligible to Road Agencies
- 2019 Awards Pending
- 2020 Applications

# LOCAL GRADE CROSSING PROGRAM ROADWAY CLOSURE PROJECTS

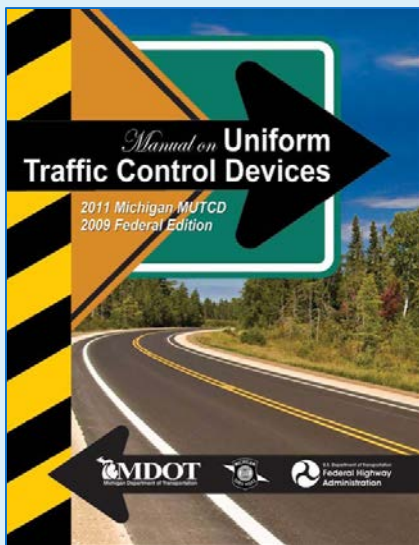
- Up to \$150K incentives
- Multiple closure bonuses
- Local choices & investments



- 62 Crossings closed
- \$6.1 Million invested
- Average \$100,000

# OFFICE OF RAIL GUIDANCE & SUPPORT

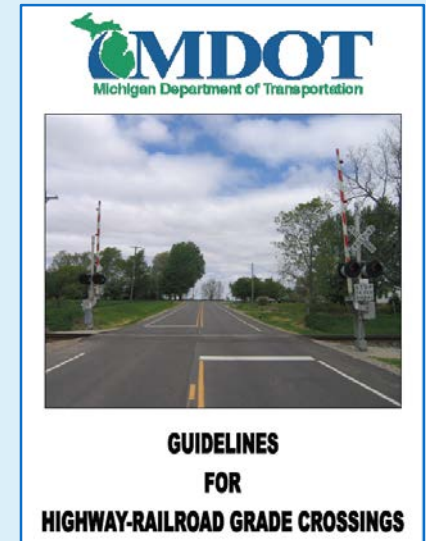
- Michigan Manual of Uniform Traffic Control Devices
- Guidelines for Highway-Railroad Grade Crossings
- Railroad Code (Public Act 354 of 1993)



## CONTACTS

- Rail Safety  
Tina Hissong, 517-335-2592
- Local Grade Crossings  
Kris Foondle, 517-335-3054

[www.michigan.gov/mdotrail](http://www.michigan.gov/mdotrail)





*Questions / Answers*  
*Thank You!*