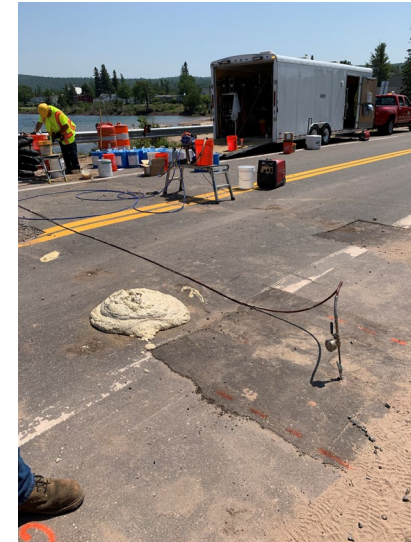


2025 Highway Maintenance Conference

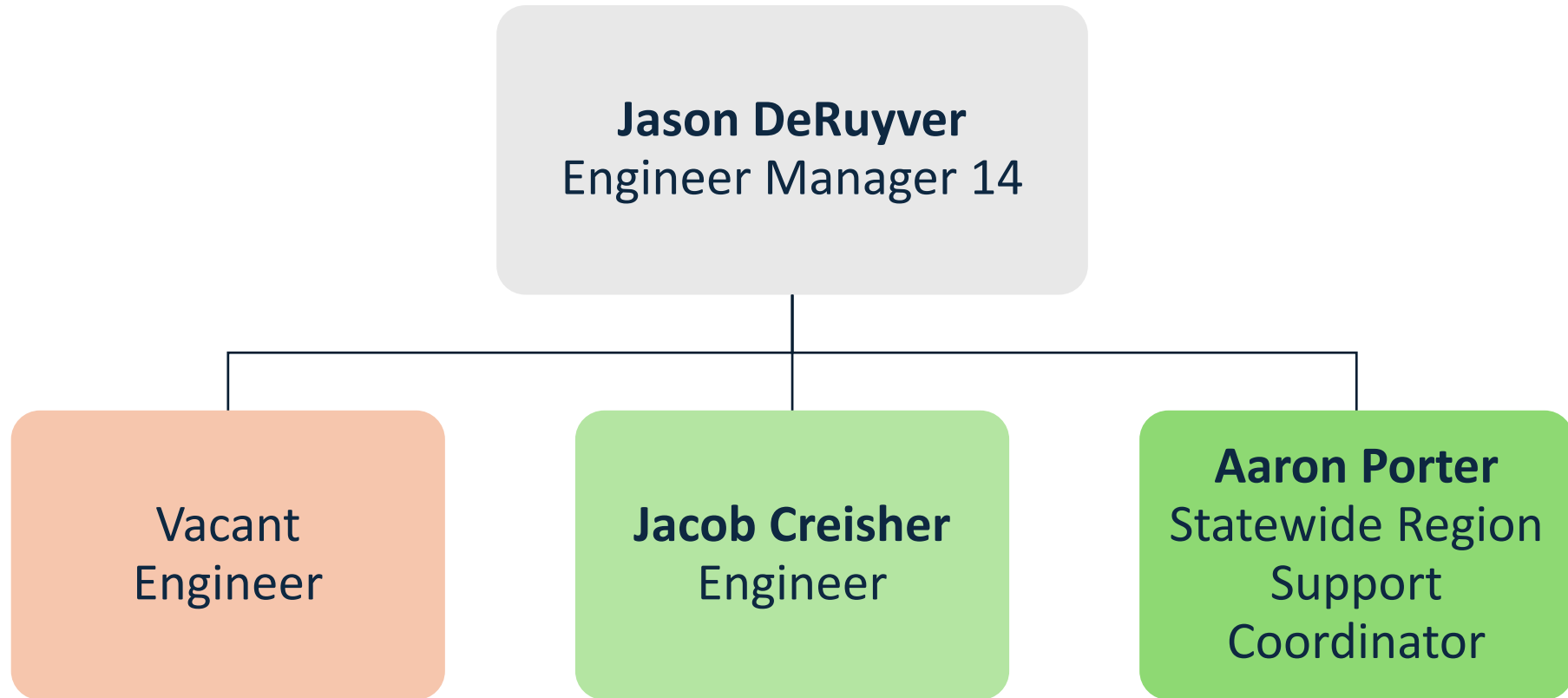
Statewide Region Support Bridge Preservation



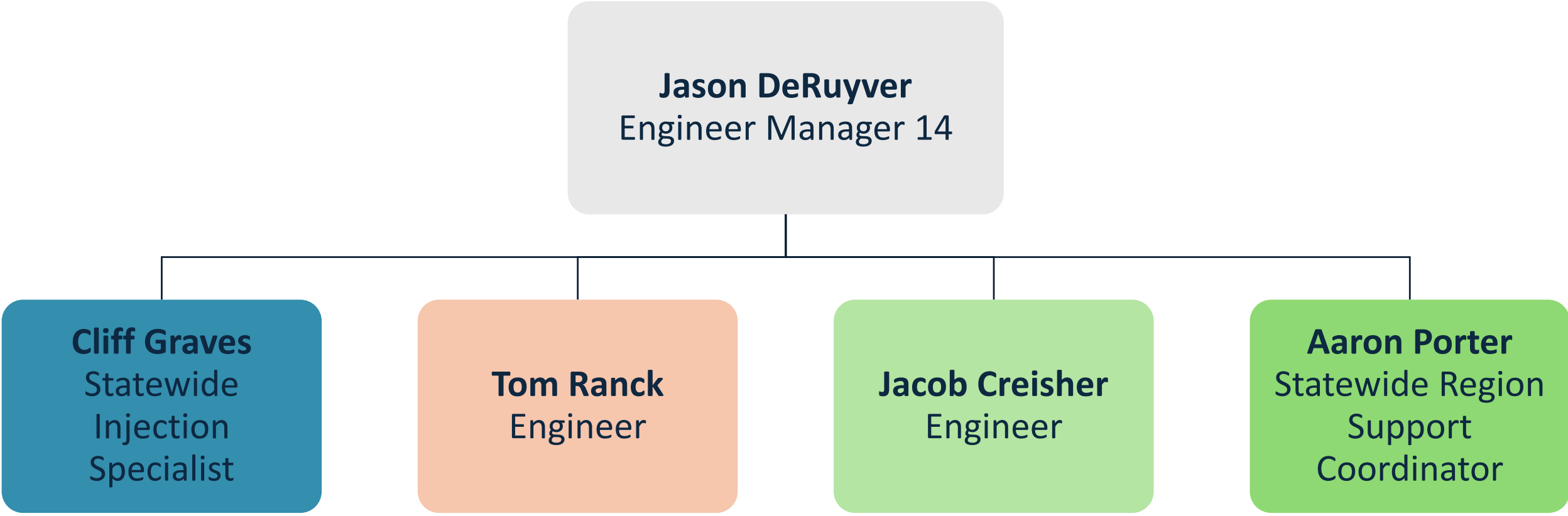
AGENDA

- Who are we? What is our role in the state?
- Showcase our Region Bridge Crews and how we try to help out?
- What other capabilities that Statewide Region Support unit can do ?

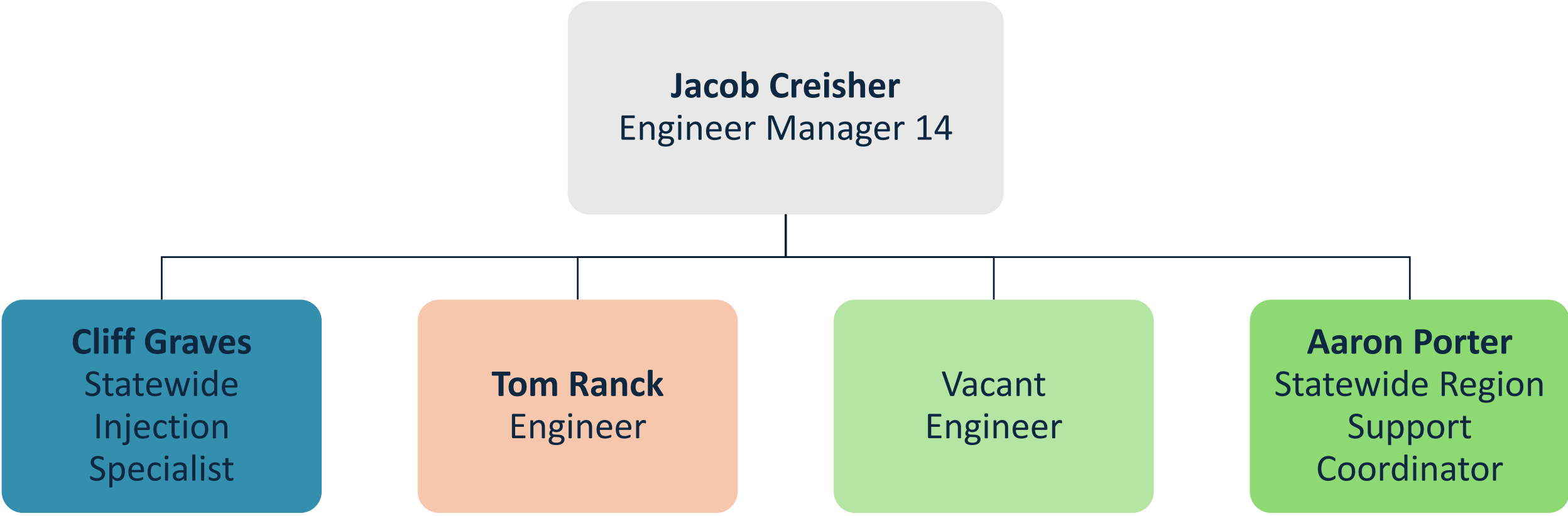
STATEWIDE REGION SUPPORT UNIT



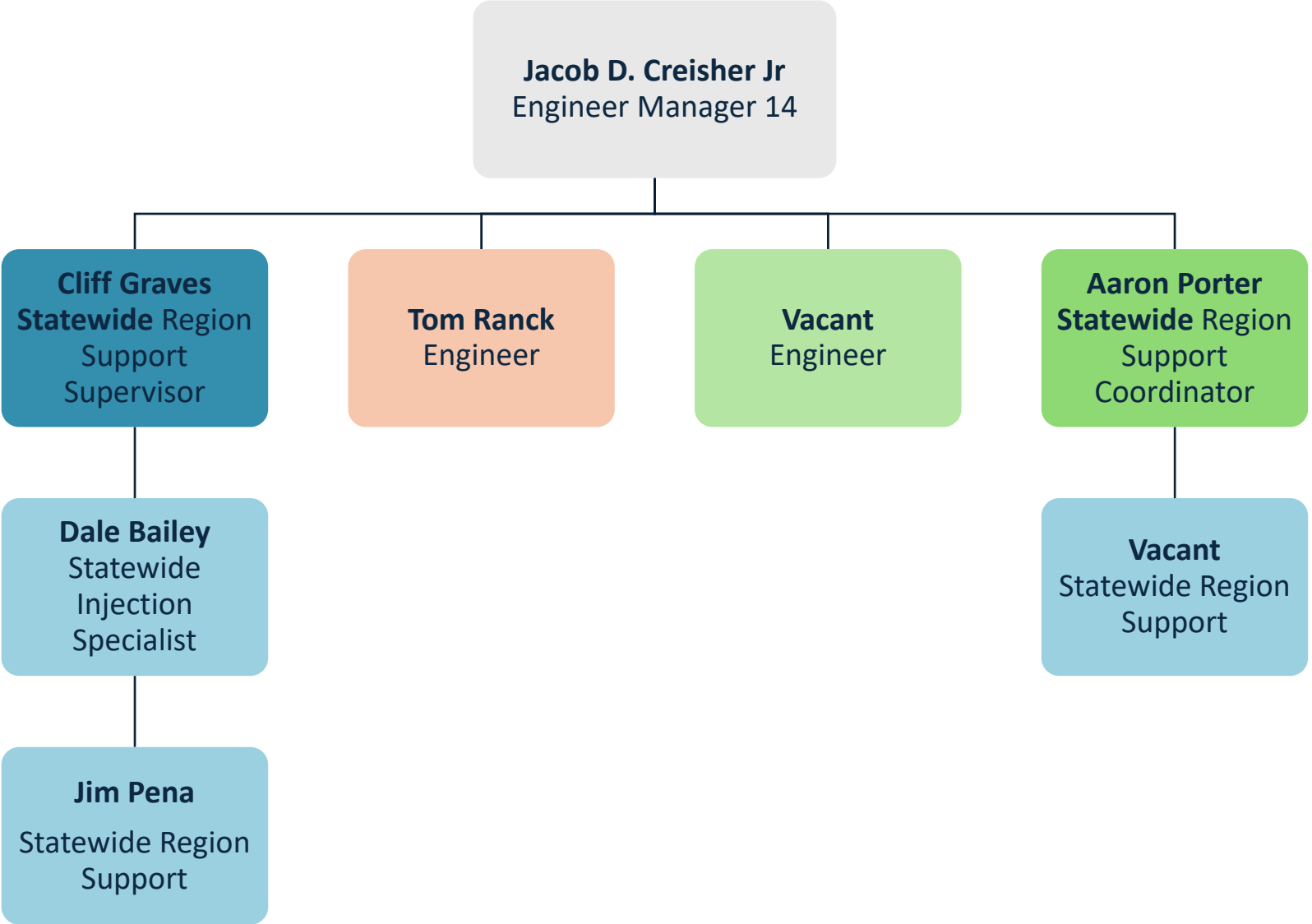
STATEWIDE REGION SUPPORT UNIT



STATEWIDE REGION SUPPORT UNIT



STATEWIDE REGION SUPPORT UNIT

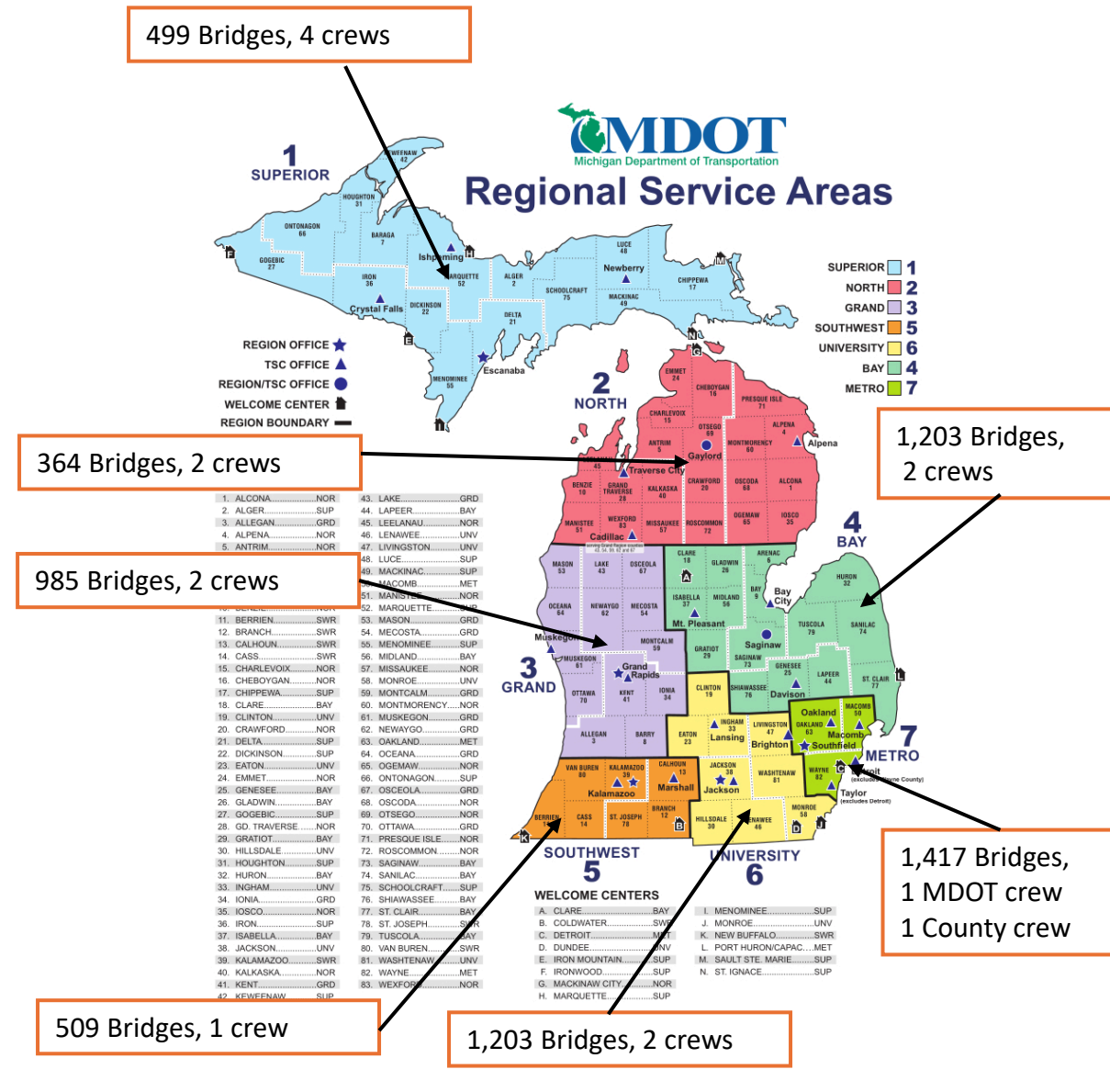


Statewide Region Support Unit Roles are:

- Provide training and alignment to the region crews for structural maintenance
- Provide oversight on the different maintenance activities
- Procure materials and equipment for their region crews
- Initiate new product trials, monitor performance, and implement statewide
- Respond to region concerns and help mitigate problems
- Act as a liaison to Design and Construction at bridge committee meeting to eliminate recurring concerns.

Bridge Maintenance Workforce

- 7 Regions
- 14 Regional “Bridge” Crews Statewide
- 3 Central Office Bridge Crews
 - Statewide Steel Bridge
 - Statewide Region Support Unit
 - Statewide Reachall



Bridge Maintenance Activities of the 7 regions

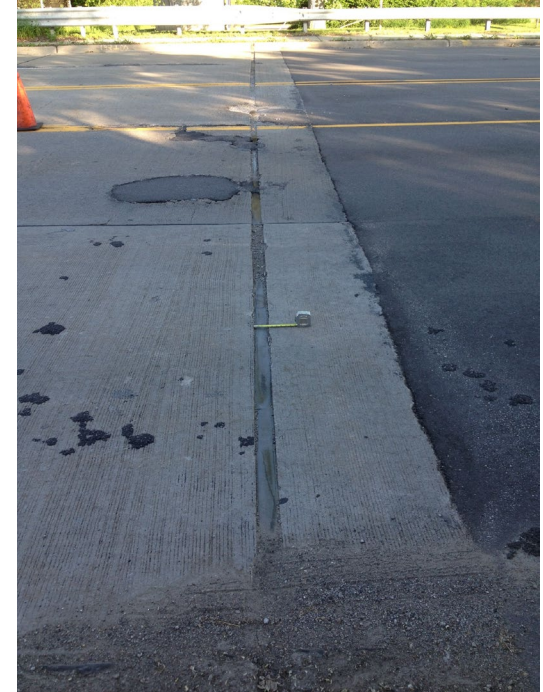
- Bridge Sweeping / Cleaning
- Pressure Relief Joints
- Silane concrete
- Joint Replacement
- Deck Patching
- Substructure Patching
- Rip Rap Installation
- Silane & Healer Sealer Applications
- Thin Epoxy/polymer Overlay

Bridge Maintenance Activities of the 7 regions

- Carbon Fiber Wrapping
- PCI Beam Patching
- Installation of Jet Filters
- T-18 Overlay system
- Column Fiberglass Jackets

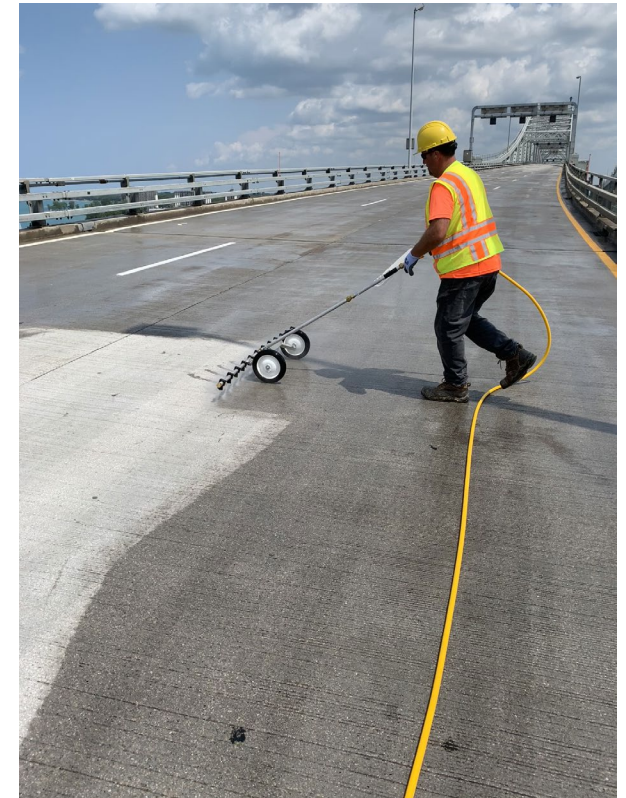
Region Bridge Crew / Statewide Region Support Unit

- Assist the 14 bridge crews statewide by providing Training and alignment to region crews with
 - Placement of Pressure Relief Joints



Region Bridge Crew / Statewide Region Support Unit

- Assist the 14 bridge crews statewide by providing Training and alignment to region crews with
 - Placement of Silane



Region Bridge Crew / Statewide Region Support Unit

- Assist the 14 bridge crews statewide by providing Training and alignment to region crews with
 - Expansion Joint Device



Region Bridge Crew / Statewide Region Support Unit

- Assist the 14 bridge crews statewide by providing Training and alignment to region crews with
 - Maintenance of Joints



Region Bridge Crew / Statewide Region Support Unit

- Assist the 14 bridge crews statewide by providing Training and alignment to region crews with
 - Use of Cathodic Protection



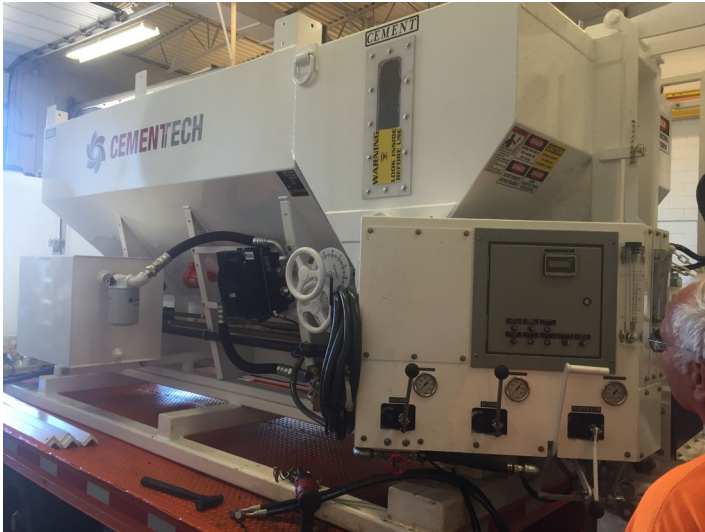
Region Bridge Crew / Statewide Region Support Unit

- Assist the 14 bridge crews statewide by providing Training and alignment to region crews with
 - Substructure Patching



Region Bridge Crew / Statewide Region Support Unit

- Assist the 14 bridge crews statewide by providing Training and alignment to region crews with
 - Placement of Fast Set Mortar (1060 Concrete)



Region Bridge Crew / Statewide Region Support Unit

- Assist the 14 bridge crews statewide by providing Training and alignment to region crews with
 - Placement of T-17 Concrete (High Strength Concrete)



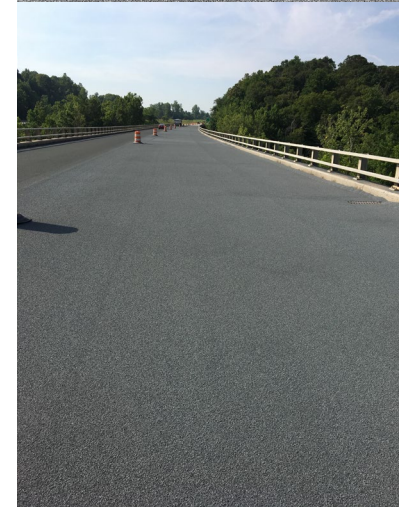
Region Bridge Crew / Statewide Region Support Unit

- Assist the 14 bridge crews statewide by providing Training and alignment to region crews with
 - Placement of Healer Sealer



Region Bridge Crew / Statewide Region Support Unit

- Assist the 14 bridge crews statewide by providing Training and alignment to region crews with
 - Placement of Thin Epoxy Overlay



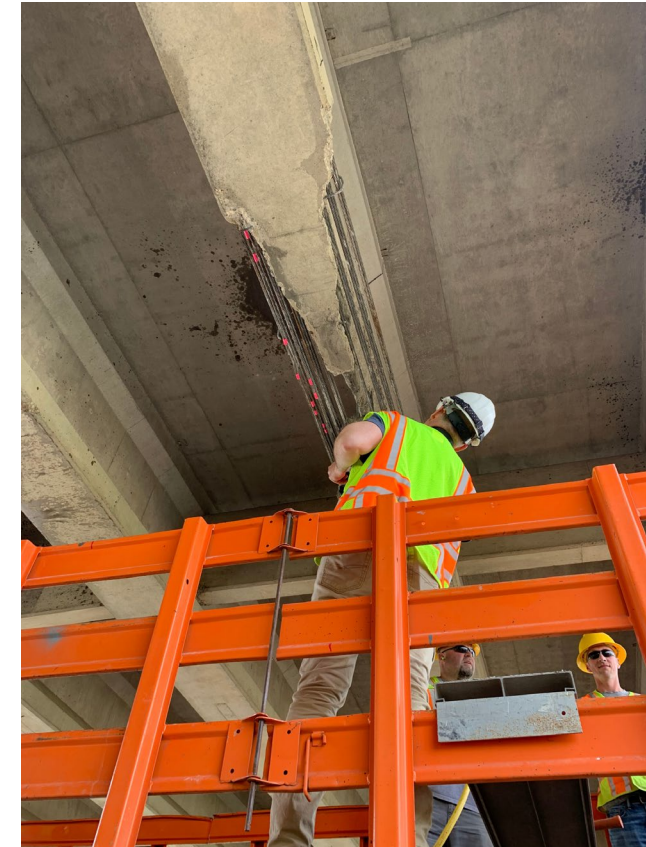
Region Bridge Crew / Statewide Region Support Unit

- Assist the 14 bridge crews statewide by providing Training and alignment to region crews with
 - Carbon Fiber Wrapping



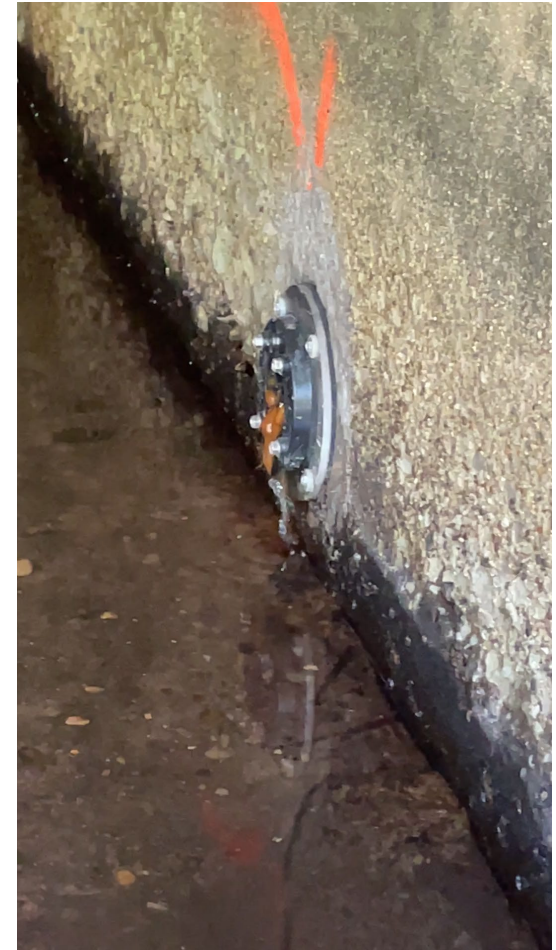
Region Bridge Crew / Statewide Region Support Unit

- Assist the 14 bridge crews statewide by providing Training and alignment to region crews with
 - PCI Beam Patching



Region Bridge Crew / Statewide Region Support Unit

- Assist the 14 bridge crews statewide by providing Training and alignment to region crews with
 - Installation of Jet Filters



Region Bridge Crew / Statewide Region Support Unit

- Assist the 14 bridge crews statewide by providing Training and alignment to region crews with
 - Placement of T-18 Overlay System



Region Bridge Crew / Statewide Region Support Unit

- Assist the 14 bridge crews statewide by providing Training and alignment to region crews with
 - Column Fiberglass Jackets



Region Bridge Crew / Statewide Region Support Unit

- Provide region bridge units with scoping & technical expertise of various bridge maintenance and preservation to assist with the management of their bridge inventories.



Statewide Region Support Unit for 7 Regions

- Develop & Maintain Statewide Region Support Procurement & Service Contracts
 - Aggregate
 - Epoxy Overlay & Healer Sealer
 - Epoxy Overlay Removal Services
 - Shot Blasting Services
 - Fast Set Mortar – Called 1060
 - T-17 Concrete – High Strength & Fast Setting
 - Injection Epoxy
 - Silane
 - Pit Cleaning Services
 - Saw Cutting Concrete Services



Statewide Region Support Unit

- Develop & maintain 24+ bridge preservation related Special Provisions such as
 - 11 Frequently Used Special Provision (FUSP)
 - Pressure Relief Joints
 - Joint Sealants
 - Metal Mesh Panels
 - Thin Epoxy Overlays (4 epoxy related)
 - Healer Sealers (Substructure & Deck)
 - 12 Non-Job Related (Templates / Recommended)
 - Bridge Cleaning
 - Deck Scaling
 - Maintainable Steel Drains (jet filters)

Statewide Region Support Unit

- 12 Non-Job Related (Templates / Recommended)
 - Rapid-Setting Polymer Concrete Patching Material
 - Self Expanding Pavement Joints
 - Resealing Construction Joints
 - High Friction Thin Epoxy Overlays
- 25 Unique – These might be job specific
 - Geopolymer Applied Structural liner
 - Temporary Barrier
 - Maintenance Repair of Prestressed beams

Statewide Region Support Unit for 7 Regions

- Procure & Trial of new bridge preservation products:
 - New deck patching materials



Statewide Region Support Unit for 7 Regions

- Procure & Trial of new bridge preservation products:
 - New expansion Joint materials



Statewide Region Support Unit for 7 Regions

- Procure & Trial of new bridge preservation products:
 - Protective overlay systems



Statewide Region Support Unit for 7 Regions

- Procure & Trial of new bridge preservation products:
 - Protective sealant systems



Statewide Region Support Unit for 7 Regions

- Serve as a resource to regions on equipment expertise and servicing



Statewide Region Support Unit for 7 Regions

- Serve as a resource to regions on equipment expertise and servicing

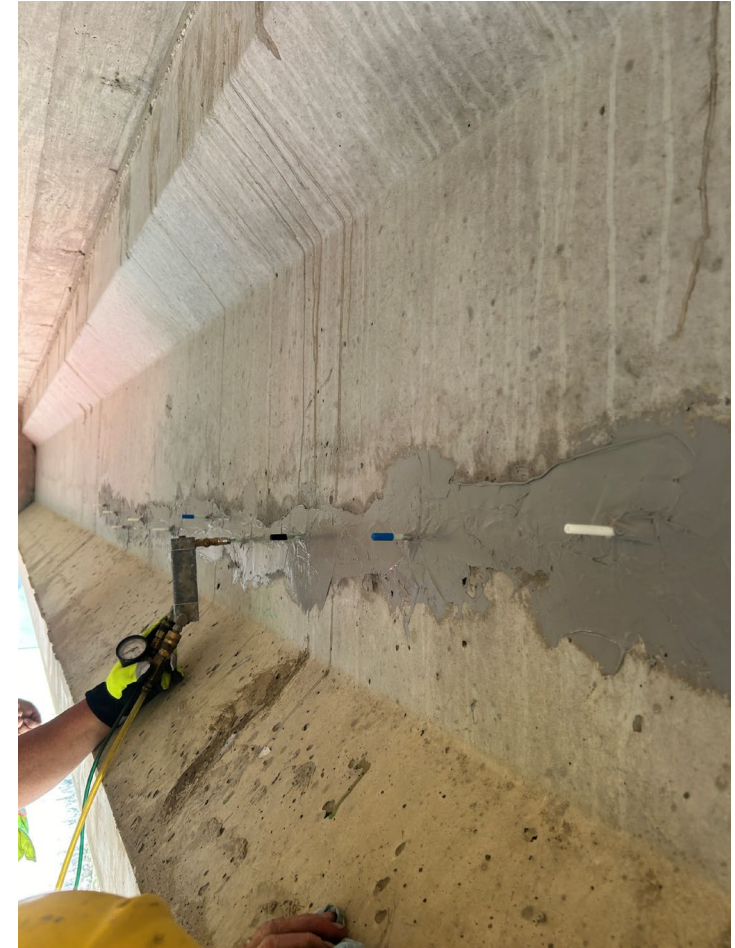


Preservation Bridge Maintenance Activities

- PCI Beam Injection
- Epoxy Deck Injection
- Abutment Injections
- Culvert Injections
- Slope Injection
- Retaining wall Injections
- Soil Stabilization
- Coming soon – Slab lifting

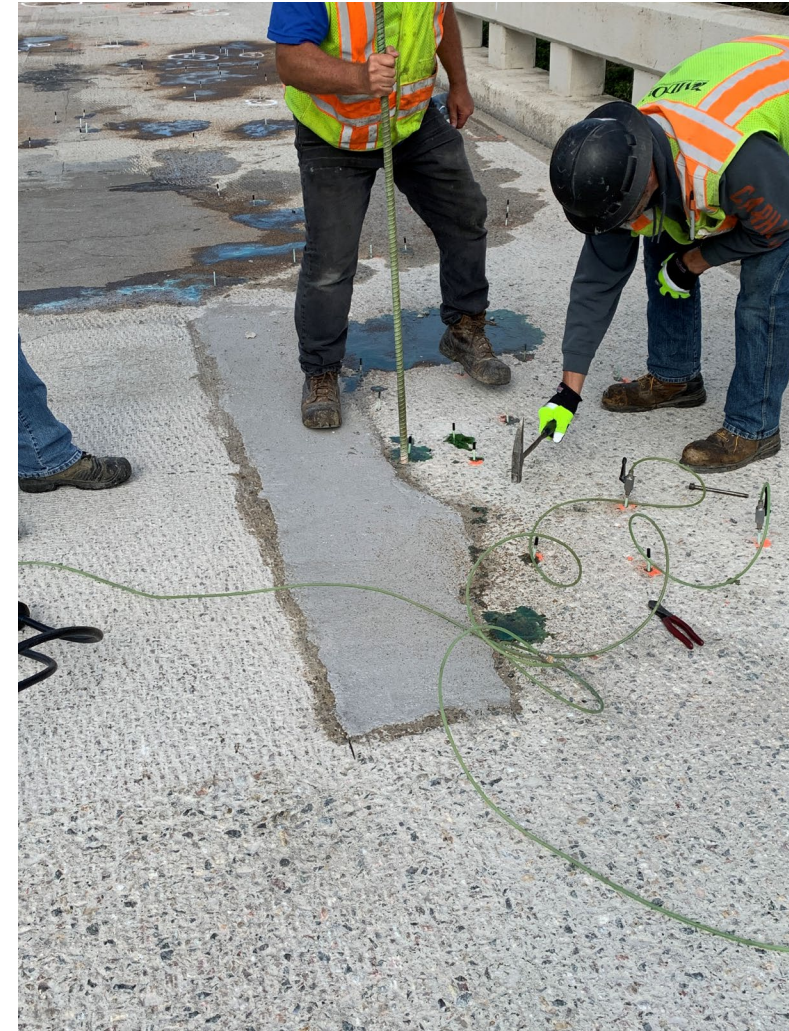
Statewide Region Support Unit

PCI Beam Injections



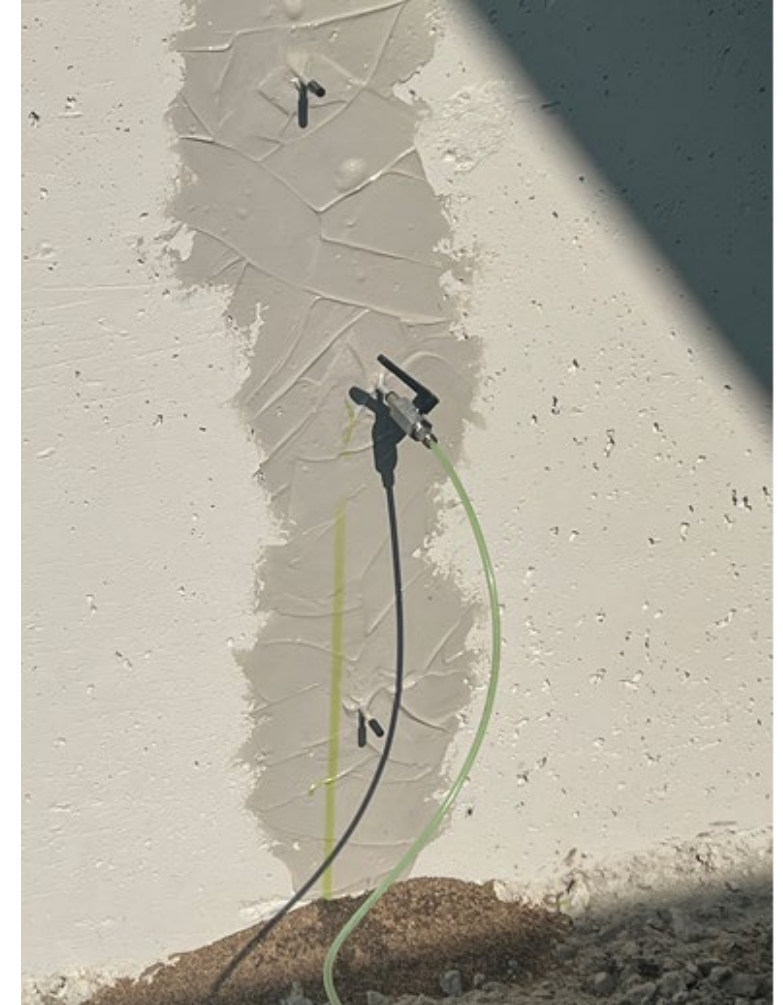
Statewide Region Support Unit

Epoxy Deck Injection



Statewide Region Support Unit

Abutment Injections



Statewide Region Support Unit Culvert Injections

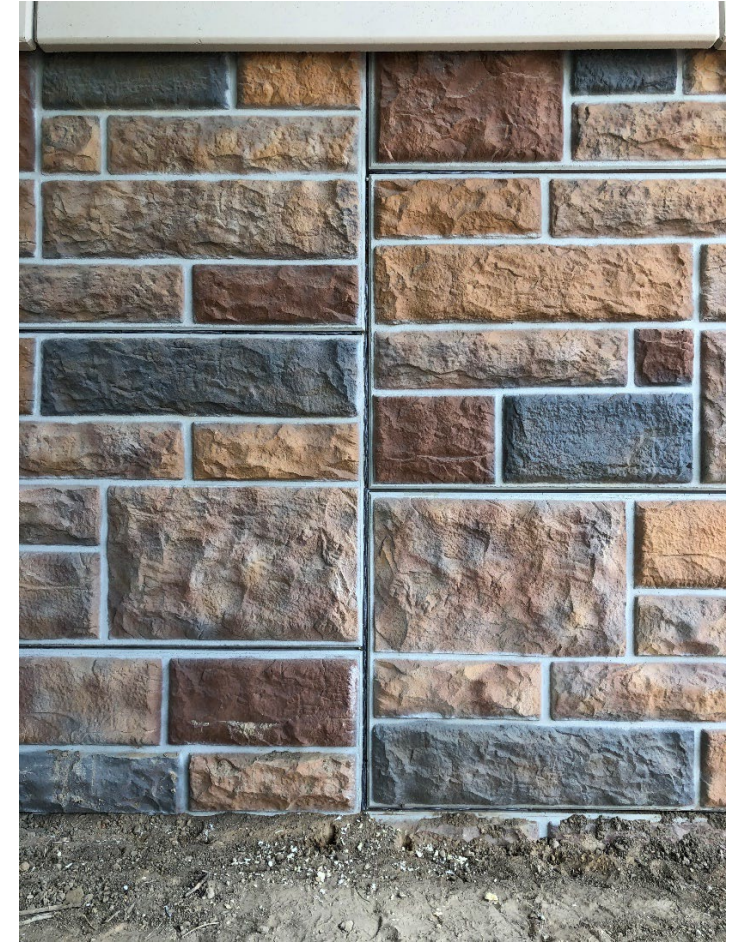


Statewide Region Support Unit Slope Paving Repair



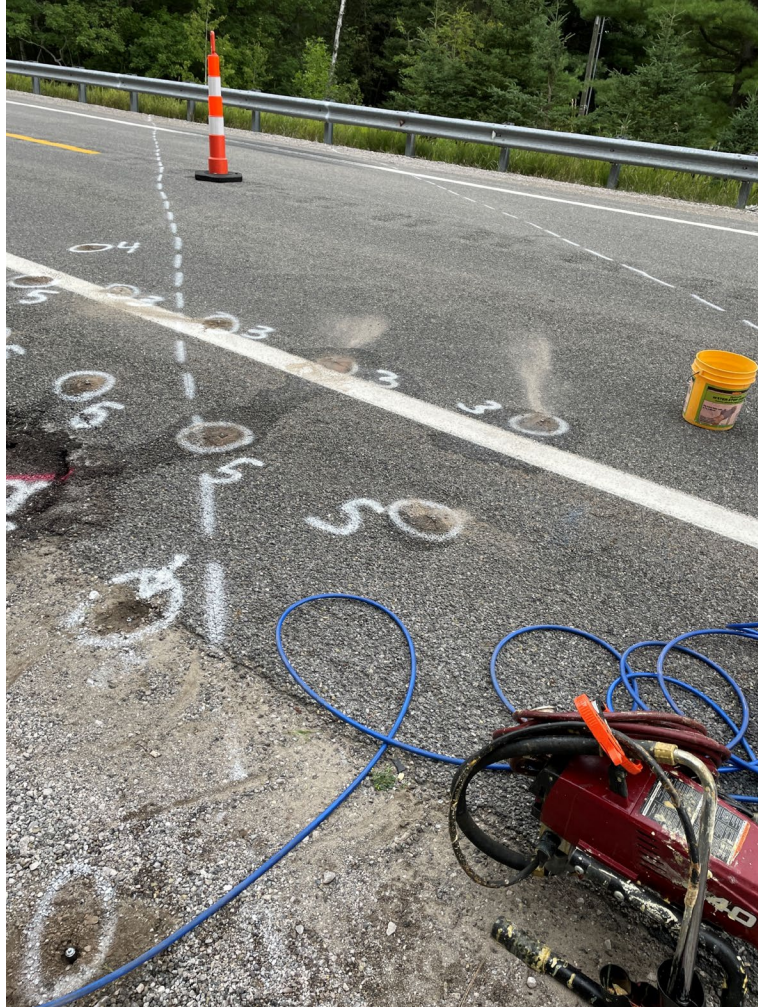
Statewide Region Support Unit

Retaining Wall Injections



Statewide Region Support Unit

Soil Stabilization



Statewide Region Support Unit

- Assist region maintenance garages with recently discovered ancillary structure RFAs & maintenance
 - Provide trouble shooting with scoping / asset management to the ancillary structure division & the regions alike
 - Provide training to maintenance garages on various ancillary structure repairs such as
 - Concrete culvert repairs
 - CMP repairs
 - Jet Filters



Statewide Region Support Unit

- Assist county engineers statewide by providing Training and alignment on bridge preservation



Statewide Region Support Unit

- Assist county engineers statewide by providing Training and alignment on bridge preservation



Statewide Region Support Unit

- Assist regions with the use of various other statewide contracts such as the as needed Culvert Rehab & Drainage Restoration contract



Statewide Region Support Unit

Jacob Creisher, P.E.

Engineer Manager
Statewide Bridge Support Unit
(517) 243-7821

Aaron Porter

Statewide Bridge Support &
Maintenance Coordinator
(517) 242-5788

Cliff Graves

Statewide Concrete Support Unit Supervisor
(517) 275-1710

Tom Ranck

Engineer Statewide Bridge Support Unit
(517) 242-2077

Dale Bailey

Statewide Concrete Injection Specialist
(517) 420-9787

Jim Pena

Statewide Concrete Support Unit Worker
(517) 246-8537

QUESTIONS

