

# 2019 County Engineer Workshop

Michigan Division Office

Lumberman's Monument



## FHWA Update

Kurt Zachary

FHWA – MI Division



# 2019 County Engineer Workshop

Michigan Division Office

Lumberman's Monument

## 2018 Compliance Assessment Program (CAP Review)

- FHWA continued with it's annual review program (year 5)
- CAP is part of FHWA's RBSO
- 63 projects (in construction)
- Projects: half trunkline/half local



# 2019 County Engineer Workshop

Michigan Division Office

Lumberman's Monument

## 2018 Compliance Assessment Program (CAP Review)

- **CAP review questions updated from past years-to better represent the overall Federal-aid program**
- **National Questions:**
  - **Debarment provisions and review**
  - **1273 included**
  - **Public opened bids**
  - **Bid Competition**
  - **Licensing**
  - **Differing Site Conditions provisions**
  - **Suspension of work provisions**
  - **Non-Collusion provisions**
  - **NEPA compliance**



# 2019 County Engineer Workshop

Michigan Division Office

Lumberman's Monument

## 2018 Compliance Assessment Program (CAP Review)

- **Michigan Specific Questions:**
  - **DBE changes from time of bid**
  - **Authorized before Advertisement**
  - **Progress payment review**
  - **STIP prior to Authorization**



# 2019 County Engineer Workshop

Michigan Division Office

Lumberman's Monument

## 2018 Compliance Assessment Program (CAP Review) – Results/Findings

- FHWA 1273 in subcontracts
- Licensure
- NEPA prior to authorization
- Quantities determined accurately
- Competitive bidding (prequalification)
- Non-collusion



# 2019 County Engineer Workshop

Michigan Division Office

Lumberman's Monument

## **Impacts/Aftermath of the 2019 Lack of Appropriations (Shutdown)**

- **Environmental documents requiring other Federal agencies input**
- **TIP approvals in MPOs will not include FTA projects**



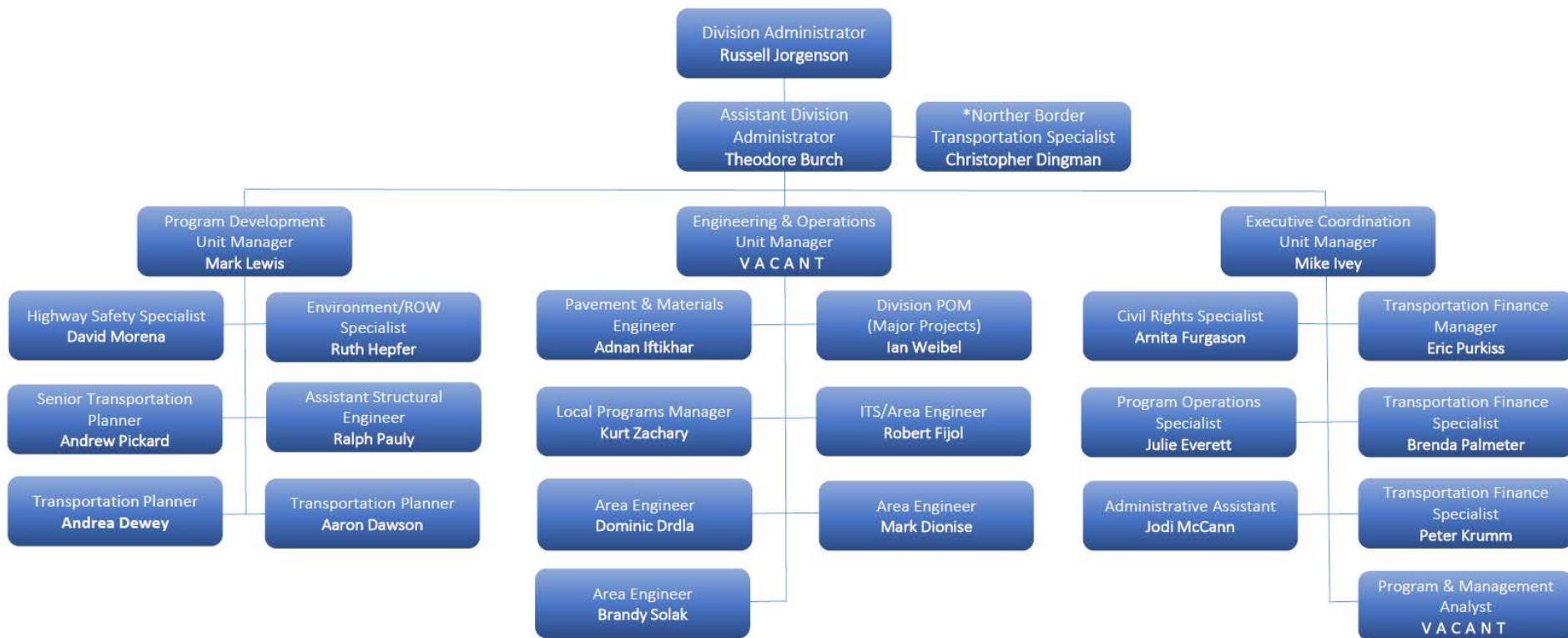


# 2019 County Engineer Workshop

Michigan Division Office

## FHWA Michigan Division Staffing Update:

### FHWA MICHIGAN DIVISION ORGANIZATIONAL CHART



# 2019 County Engineer Workshop

Michigan Division Office

Lumberman's Monument

## Michigan EDC 5 Initiatives:

- **Advanced Geotechnical Exploration Methods**
- **Collaborative Hydraulics**
- **Unmanned Aerial Systems**
- **Virtual Public Involvement**

[https://www.fhwa.dot.gov/innovation/everydaycounts/edc\\_5/index.cfm](https://www.fhwa.dot.gov/innovation/everydaycounts/edc_5/index.cfm)





# 2019 County Engineer Workshop

Michigan Division Office

## **BUILD/TIGER/INFRA Discretionary programs:**

**TIGER has become BUILD**

**TIGER: 2016-Flint; Atherton and Dupont Streets**

**TIGER: 2017-RCOC; North Holly Road**

**BUILD: 2018-MDOT; US-31 from I-94 to Napier**

**INFRA: 2018-Macomb; Mound Road**

INFRA details on [www.transportation.gov/INFRA](http://www.transportation.gov/INFRA)



# 2019 County Engineer Workshop

Michigan Division Office

Lumberman's Monument

## Plug for Next Year:

- **Mini Roundabouts**



# 2019 County Engineer Workshop



Michigan Division Office



## Questions?



U.S. Department of Transportation  
Federal Highway Administration