



# Project Showcase: M-72/M-22 in Traverse City

Reconstructing the iconic M-22/M-72 (Grandview Parkway) with operational and multi-modal improvements along the West Grand Traverse Bay

FEBRUARY 4, 2026 | COUNTY ENGINEERS' WORKSHOP

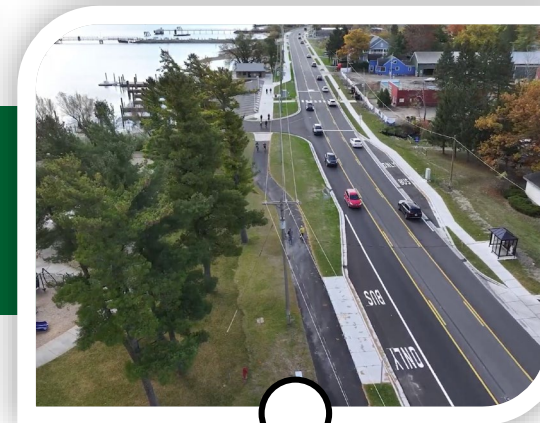
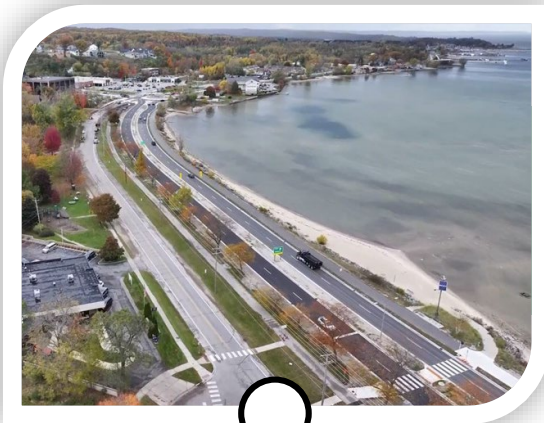
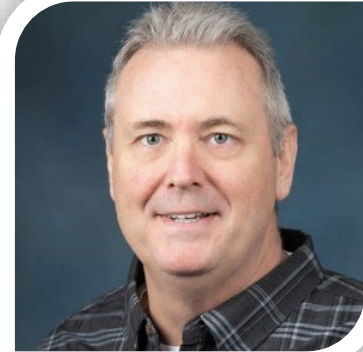


Photo Credit: MDOT Traverse City TSC



# Presenters

## Roles



**Dan Wagner, PE**

---

TSC Manager  
MDOT  
Traverse City TSC



**Dakota Roberts, PE**

---

Senior Project Engineer  
ROWE



# The Team

## Design Team



### Owner

*Community Engagement  
Project Management  
Traffic and Safety  
Construction Engineering*



### Prime Consultant

*Roadway  
Sanitary Sewer  
Box Culvert  
Landscaping  
Permanent Signing  
Pavement Marking  
Signals*



### Sub-consultant

*Maintenance of Traffic  
Signals*



### Sub-consultant

*Signals  
Lighting*



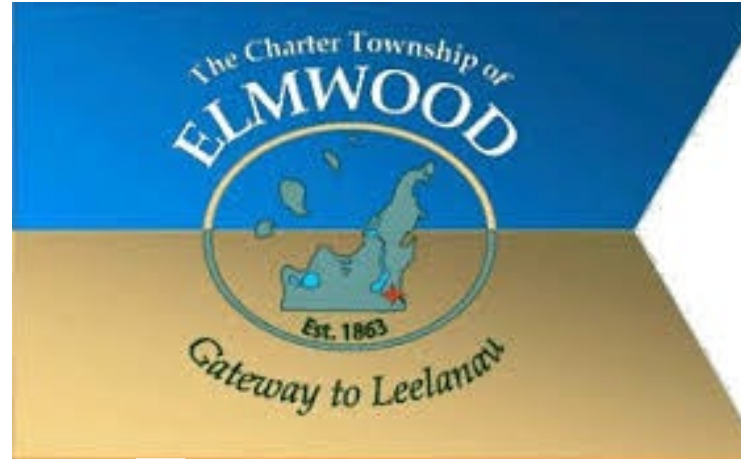
## Stakeholders

### PARTICIPATING STAKEHOLDERS

- Elmwood Township
- City of Traverse City
- Grand Traverse County
- Grand Traverse County Road Commission
- Leelanau County
- Leelanau County Road Commission
- Traverse City Area Public Schools (TCAPS)
- Bay Area Transit Authority (BATA)
- Traverse Area Recreation Trails (TART)
- Discovery Center and Pier
- FreshWater Research & Innovation Center
- Slabtown Neighborhood Association
- Bingham Township
- Local Newspaper/Media Outlets



Freshwater Research  
& Innovation Center

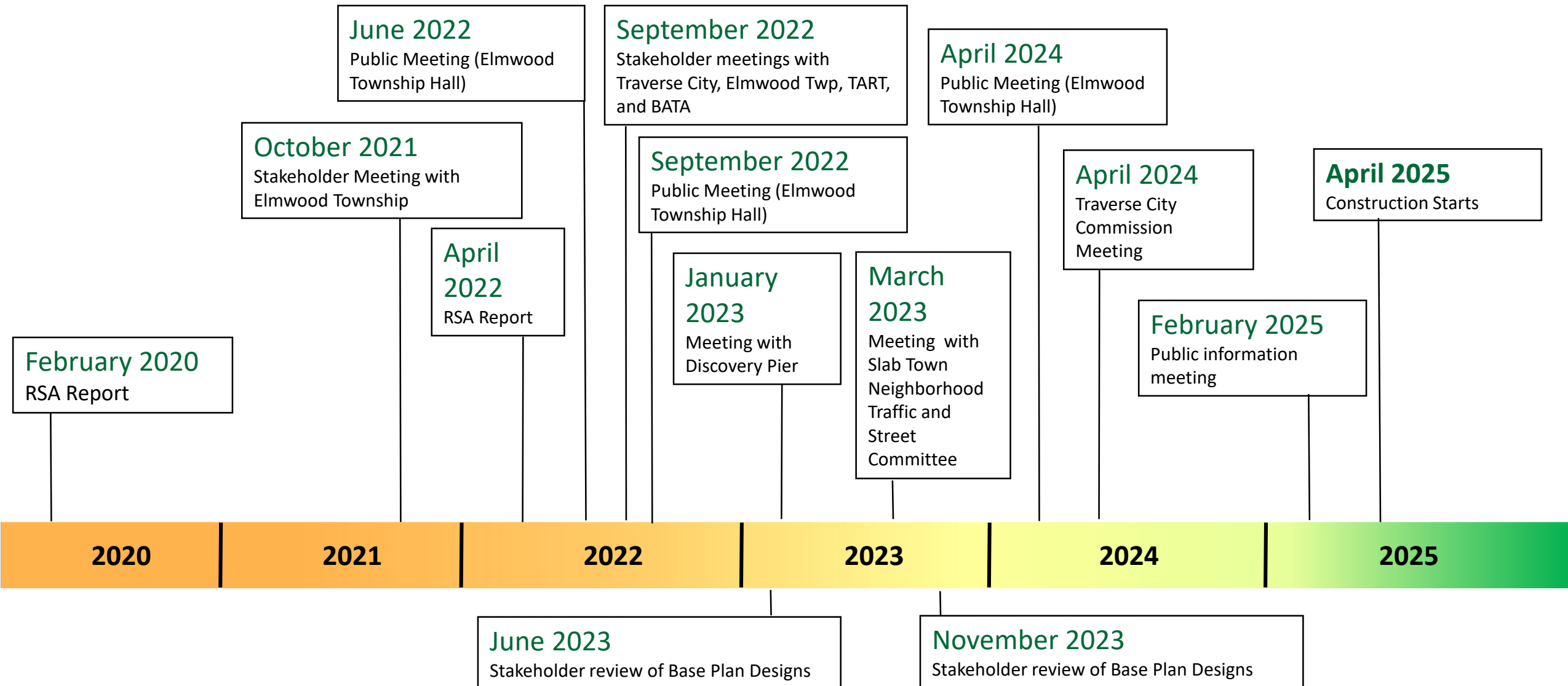


CITY OF  
**TRAVERSE CITY**





# Stakeholder & Public Outreach Efforts





# Project Evolution

**2010**

Traverse City  
Bayfront  
Study

**August  
2013**

Commercial  
Corridor Sub-Area  
Master Plan –  
Elmwood  
Township

**2016**

Proposed the need for  
sidewalks, crosswalks, and a  
trail along M-22 in Elmwood  
Township

**July 2016**

Commercial  
Corridor Traffic  
Study – Elmwood  
Township

**February 2020**

Road Safety Audit Report M-22

**2020**

JN 202518 – M-22  
Reconstruction (North  
of M-72 to Lakeview  
Hills Road) Approx.  
Length 6 miles

**2021**

JN 204066 – Grandview Parkway  
Reconstruction (Division Street to  
west of M-72/M-22 intersection)

**2023**

JN 202518 & 20466 combined  
into one project

**February  
2022**

Grandview  
Parkway, Bay  
Shore Drive  
Concept  
Review and  
Discussion

**October  
2025**

Ribbon Cutting

**October  
2024**

Project  
Letting

**April 2022**

Road Safety Audit Report Grandview  
Parkway

2010

2011

2012

2013

2014

2015

2016

2017

2018

2019

2020

2021

2022

2023

2024

2025





## Overview of Project

- Project Limits
  - o Cedar Creek (North of Cherry Bend Road) to 500 feet west of Division Street
- Length
  - o Approximately 2.2 miles
- Project Cost: \$25.9 Million
  - o Funded with State/Federal (80/20)
  - o Tap Grant (Elmwood Township as joint applicant)
  - o US Department of Transportation Rural Surface Transportation Grant (\$14.4 Million)
- Improved all modes of transportation
  - o Pavement reconstruction
  - o Stormwater quality improvements
  - o Safety and operational improvements
  - o Non-motorized paths and ADA upgrades





- **Budget Shortfall**
  - **Initial Funding**
    - \$14.6 million
  - **Base Eng. Plans** – March 2023
    - \$18.4 million
  - **Final Eng. Estimate**
    - \$22.4 million
- **Funding**
  - **Rural Grant Awarded** – Dec. 2023
  - **TAP Grant Awarded** – Aug. 2024
  - **Letting** – Oct. 4th, 2024
- **Critical Right-of-Way**
  - **M-22/M-72 Intersection**

Photo Credit: The Express Tribune





### Things to keep in mind:

- **Right-of-Way**
- **Grand Traverse Bay**
- **Utilities – Significant relocations**
- **Maintenance of traffic**
- **Hazardous groundwater**
- **Flat existing grades**
- **Community concerns**
- **Significant multi-modal uses**

Photo Credit: MDOT Traverse City TSC

## M-22/M-72 Intersection – Existing Configuration



- **Road Safety Audits (RSA)**
  - Feb. 2020 – M-22 RSA
  - Feb. 2022 – Grandview Parkway Concept Review and Discussion
  - April 2022 – Grandview Parkway RSA
- **High Traffic volumes**
  - Tourism
  - Special Events
- **Bay Street Connection**
  - Community input
    - Maintain Access
    - Reduce M-72 bypass traffic

Photo Credit: Google Maps





# Initial Concepts





- **Maintain one-lane 2-way traffic**
  - **Detour was not an option**
    - **Local Impacts**
    - **Project Cost**
    - **User Cost**
- **Storm Sewer**
  - **7' deep – 30" Storm Sewer**
  - **10' deep – 63"X98" Storm Sewer**
  - **Hydrodynamic Separator**

Photo Credit: ROWE Professional Services Co.





- **Adjacent property impacts**
- **Bay Street connection**
- **Grand Traverse Bay impacts**
- **Pedestrian safety**
  - **HAWK Signals**
    - **Pedestrian refuge island**
- **Unique Considerations**
  - **Cherry trucks**
  - **Large boats & yachts**

Photo Credit: MDOT Traverse City TSC





## Things to keep in mind:

- **Tight ROW**
  - Grand Traverse Bay
- **Tom's Market parking lot**
- **Profile changes**
  - Flat grades
  - Tying into roundabout
- **Shared use path through driveways**

Photo Credit: ROWE Professional Services Co.



# Shared Use Path

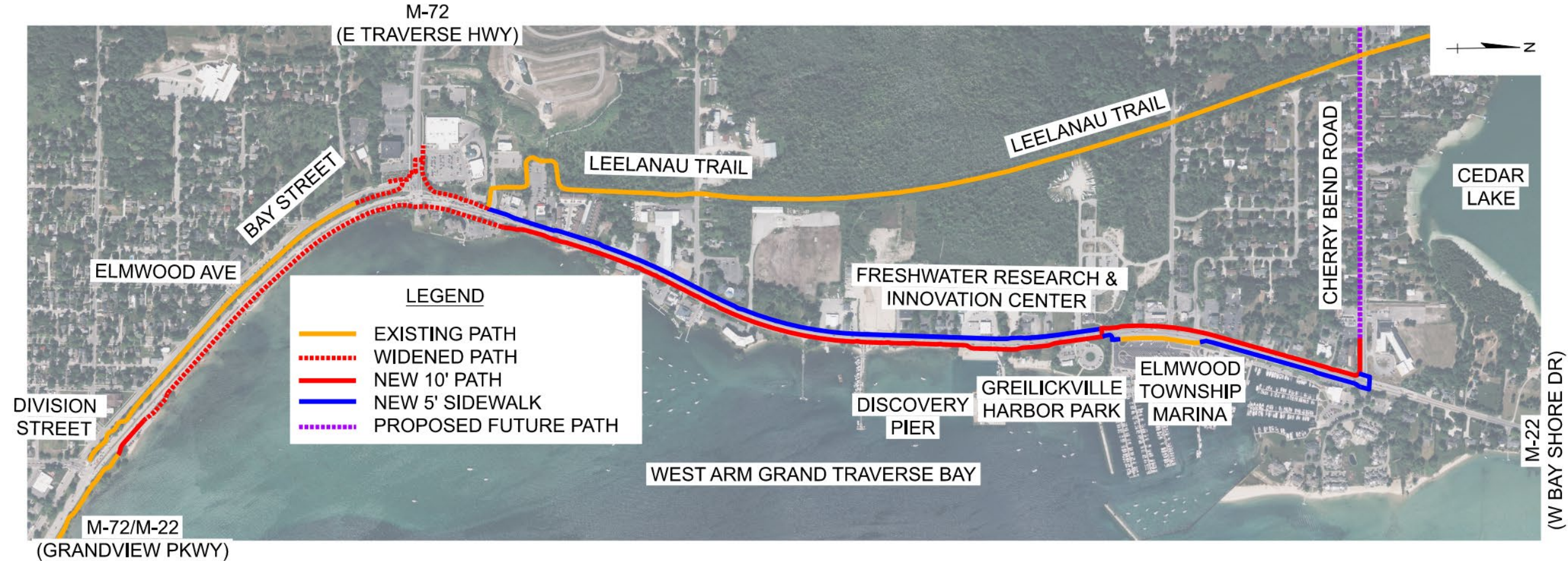


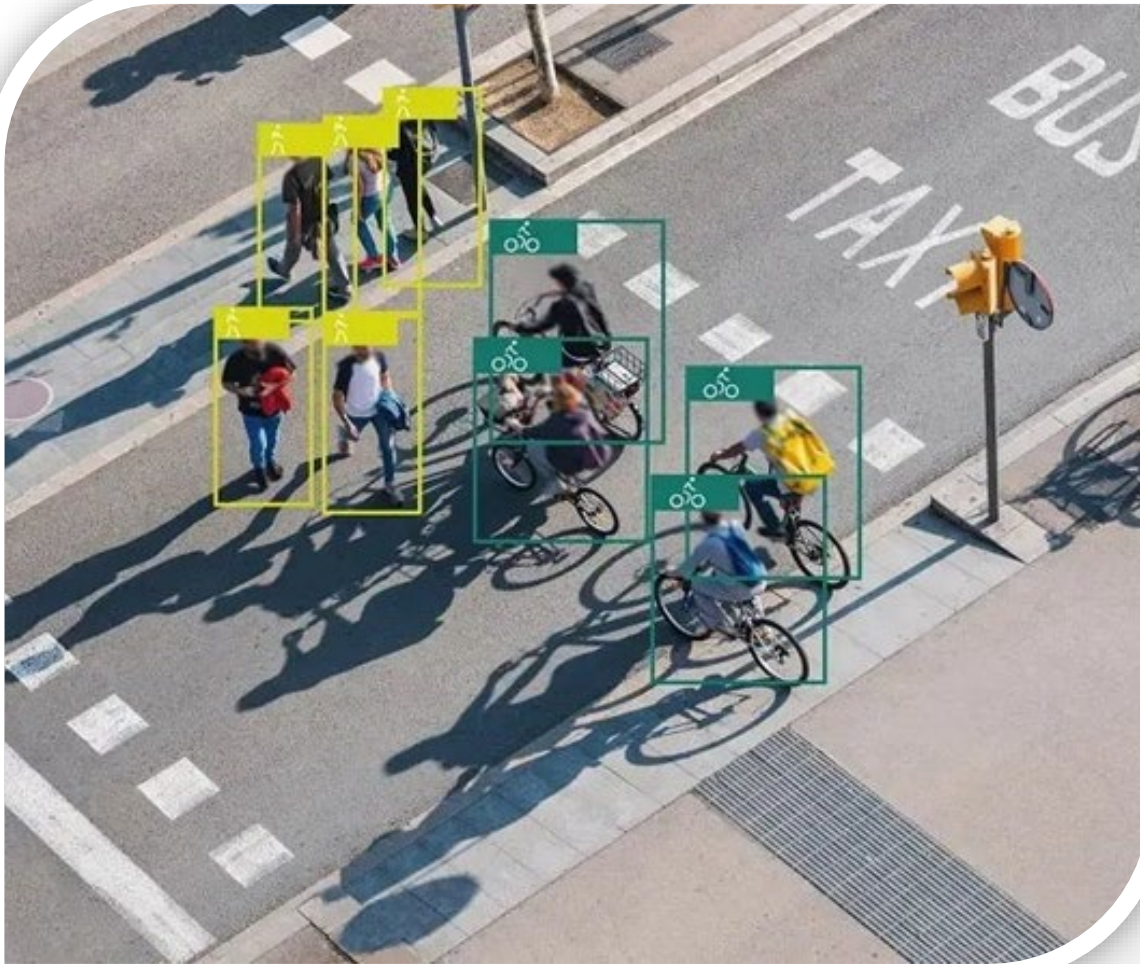
Photo Credit: ROWE Professional Services Co.





- **Pedestrian Safety**
  - **5 HAWK signals**
    - Strategic placement
  - **6 Mid-block crossings**
    - 2 Pedestrian islands
    - Potential future RRFBs
- **BATA Bus loading zones**
  - **Bus Shelter**
- **Benches**
- **Bike racks**
- **Trash receptacles**

Photo Credit: MDOT Traverse City TSC



- **8 Multimodal counters installed**
  - M-72 HAWK Signal
  - M-22 Leelanau Trail Crossing
  - Cherry Bend Road
  - Division Street
- **Counts pedestrian & bicyclists (directional)**
- **One of MDOT's first pilot installation**
- **Supports seasonal and long-term active transportation data**

Photo Credit: Eco-Counter





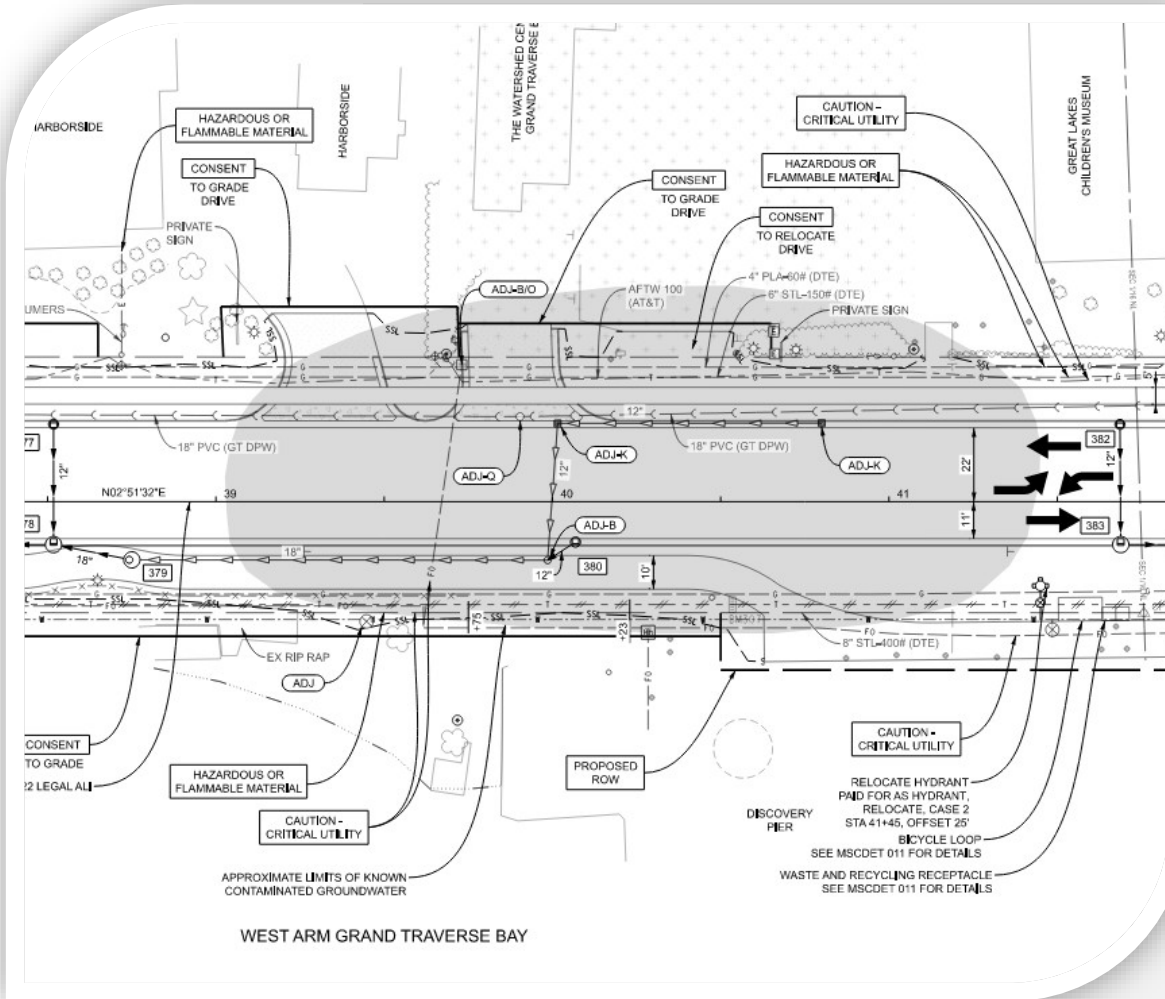
# Stormwater Management



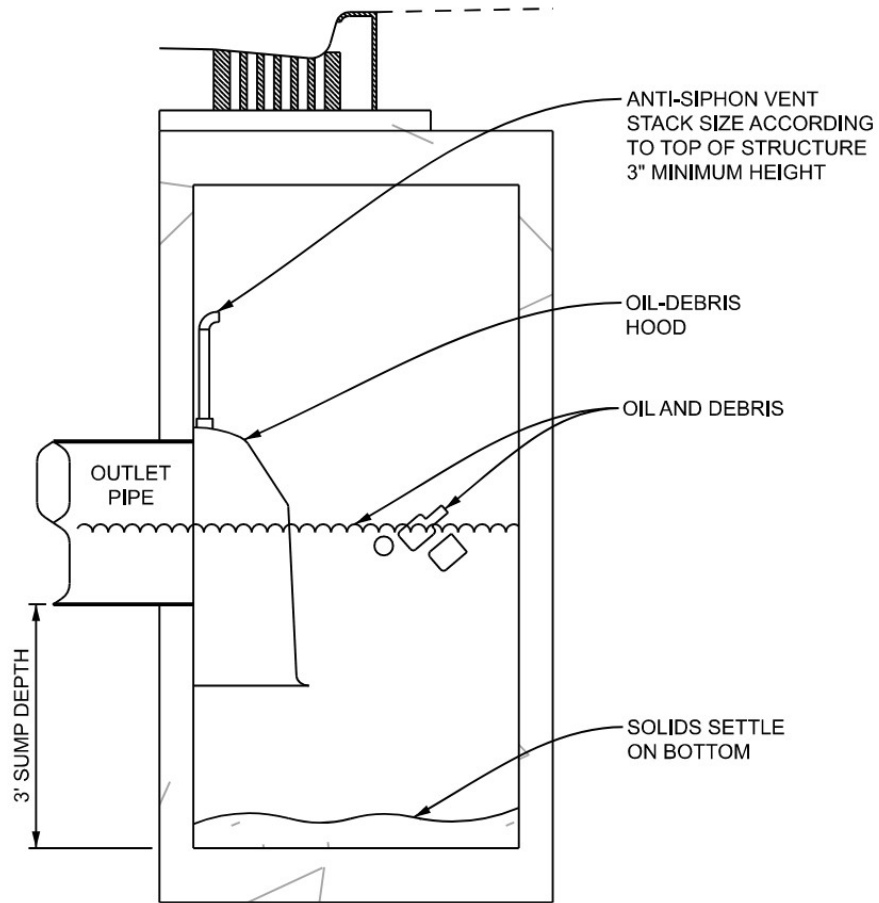
- **3 Culvert Crossings**
  - **Box Culvert**
- **10 Outlets to Grand Traverse Bay**
- **Permitting**
  - **EGLE**
  - **Army Corp of Engineers**
- **Separated Storm sewer systems**
  - **Traverse City and MDOT**
  - **Private property and MDOT**
- **Coordination with the Drain Commission**

Photo Credit: ROWE Professional Services Co.





- **4 Contaminated Groundwater Sites**
  - Limited earth excavation
  - Retained existing drainage
- **Minimized risk & reduced cost by adjusting design to minimize impacts**
  - Profile adjustment
  - Modified storm sewer



- **Hydrodynamic Separator**
  - **M-22/M-72 Roundabout**
  - **Existing M-72 Hydrodynamic Separator**
- **18 Traverse City Outlet covers**

Photo Credit: ROWE Professional Services Co.



## Continual Coordination



- **Phase 1 – Grandview Parkway Reconstruction**
- **Freshwater Research & Innovation Center**
- **Discovery Pier**
- **Elmwood Township Marina**
- **Apache Trout Grill**
- **Cherry Bend Road path extension**

Photo Credit: FreshWater Research & Innovation Center



# Construction Challenges



## Things to keep in mind:

- **Phase Line**
- **Multiple Stages**
- **Temporary Widening**
- **Utilities**
- **Commercial Access**
- **Pedestrian Access**
- **Island Construction**
- **Tourism/Unfamiliar corridor users**

Photo by Team Elmer's ©





## Building a Roundabout



Video by Team Elmer's ©

ROWE Professional Services Company



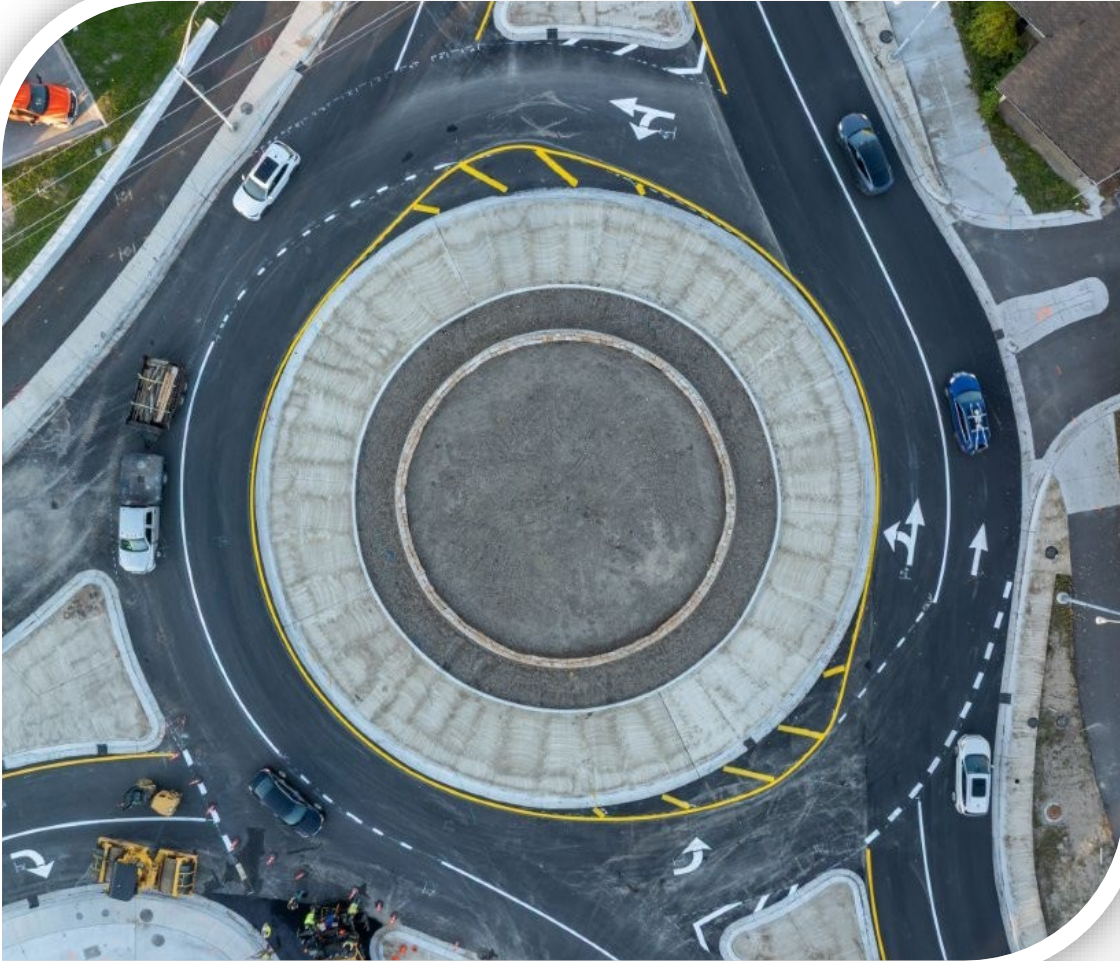


## Lessons Learned



- **Coordination is KEY**
- **Conservative Real Estate needs**
- **More in-depth utility research during design**
- **Constructability review**
  - Temporary pedestrian path
  - Transverse storm sewer crossings
  - Runaround

Photo by Team Elmer's ©



- Transformed the gateway to the Leelanau Peninsula and Traverse City
- Multimodal Corridor
- Safety Improvements
- Quality of Life

Photo by Team Elmer's ©





## Public Impact



Video Credit: MDOT Traverse City TSC

# QUESTIONS

