

Local Agency Program Update 2025 County Engineer's Workshop



Bruce Kadzban PE, Section Supervisor
Local Agency Program

www.Michigan.gov/mdotlap

Local Agency Program



Presenters:

Local Agency Program:

Environmental:

Real Estate:

Office of Economic Development:

Bruce Kadzban, Ryan Doyle

Robyn Coole

Kem Hoopingarner

Lindsay Ross

Why Do We Do What We Do?

Federal Highway Administration (FHWA) is responsible for administering the National Highway Trust Funds

FHWA Michigan delegated some administration responsibilities to MDOT via Stewardship and Oversight agreement

Repercussions – nonperformance results in losing Federal funds

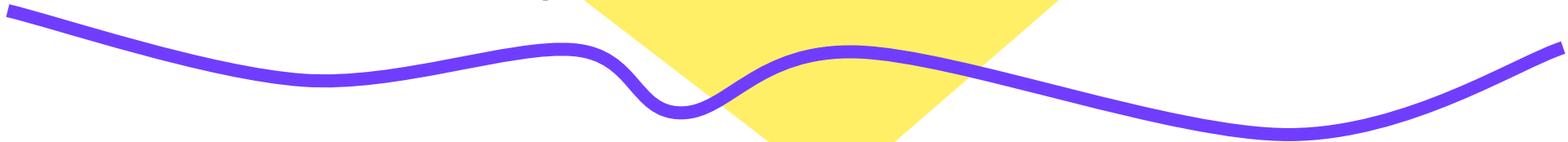
Over 630 Customers

Act 51 Agency

(defined in PA 51, State of Michigan PA's of 1951)

- ◆ City, Village, County Road Commission or Road Department
- ◆ Other Federal & State Agencies and Departments

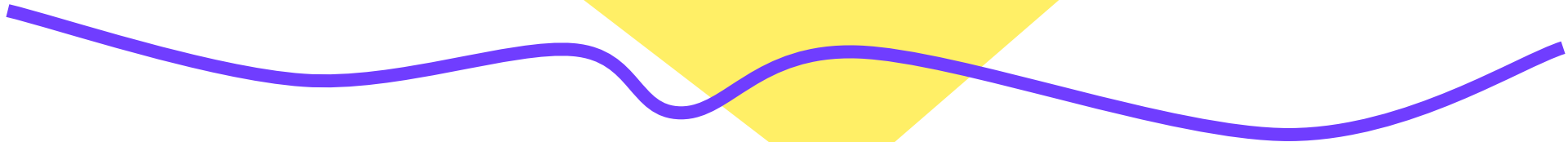
NOT a

- ◆ Township
 - ◆ Other County Department, DDA, or other quasi-government agency
 - ◆ Local special interest group
- 

LAP's Goal

Simple –

Help each local agency to preserve its federal and state transportation funds



LAP's Partners

FHWA – Michigan

Various Federal & State Agencies and consultants

County Road Association (CRA)

Michigan Municipal League

Construction community

and you all here

Local Program

- 110,000 Miles of Federal Aid eligible roads (1,200 NHS)
 - Not trunkline (state routes, US, or Interstate routes)
 - major collectors, rural, etc
- FY 2024 - delivered over 560 projects
 - Over \$658.3 million
 - Average Project Cost is > \$1.3M



Separate from the MDOT Trunkline Program

All advertised and bid through the MDOT letting system



Funding Types & Sources

STBG - standard federal transportation funds

Federal & State Bridge

Federal & State Safety

Transportation Alternatives Program, Safe Routes to Schools

Misc - LTAP, Emergency Response, FLAP, Earmarks, NOFO's,
RAISE, INFRA, RCP, "August Redistribution"



Federal Funding

Current Continuing Resolution through March 14, 2025

Waiting on passage of final federal budget



Proposed State Funding

Current State FY 2025 budget is in effect

Aware of several versions of future funding strategies

Wait and see



Current LAP Scorecard

through February 2025

through February 2024

187 jobs bid and authorized

227 jobs bid

\$271.5M as read amount

\$303.1M as read amount

\$55.3M state earmarks



Current LAP Scorecard

remaining obligation authority

\$5.4M Rural, \$48.5M Non-Rural

Available by federal Continuing Resolution, extending through March 14

\$100M loan from Trunkline program to Local Program, for projects through the May 2025 letting

Anticipating August Redistribution

LAP EMERGENCY RESPONSE UPDATES

Event	Approved sites	Total (Millions)	Federal Share	Status
April 2023	43	\$ 16.2	\$ 12.6	Several for bidding Spring 2025
June 2021	3	\$ 2.1	\$ 1.8	All local projects complete
May 2020	63	\$ 126.2	\$ 113.6	Most complete, several still not closed
July 2019	9	\$ 2.1	\$ 1.6	All local projects complete
June 2018	134	\$ 75.0	\$ 67.5	All local projects complete

LAP EARMARK PROCESS

STATE EARMARK FUNDS

- Public Act is signed into law with sections for earmark funds. This varies from year to year.
- Legislators send in packets to the State Budget Office (SBO) with the local agency name and project details.
- LAP is notified of the legislator's packet and project details.
- LAP works with the local agency to confirm project details, execute an agreement, and pay out earmark funds.
- Yearly reporting on project status until project completion.
- LAP staff emails TSC staff that the project is complete for review of project completion.

FEDERAL EARMARK FUNDS

- FHWA notifies MDOT of all federally funded earmark projects.
- LAP earmark staff works with the grant recipient and their ACT 51 agency (if necessary) to confirm scope, funding, and timeline to get the project programmed.
- LAP staff engineers work with the ACT 51 agency through project completion and close out.
- LAP staff emails TSC staff that the project is complete for review of project completion.



STATE AND FEDERAL EARMARK PROGRAM

Looking for help with federal or state earmarks for your local agency?

Contact:

Kristen Sullivan
LAP Earmark and Automation Analyst

SullivanK4@Michigan.gov

517-335-1209



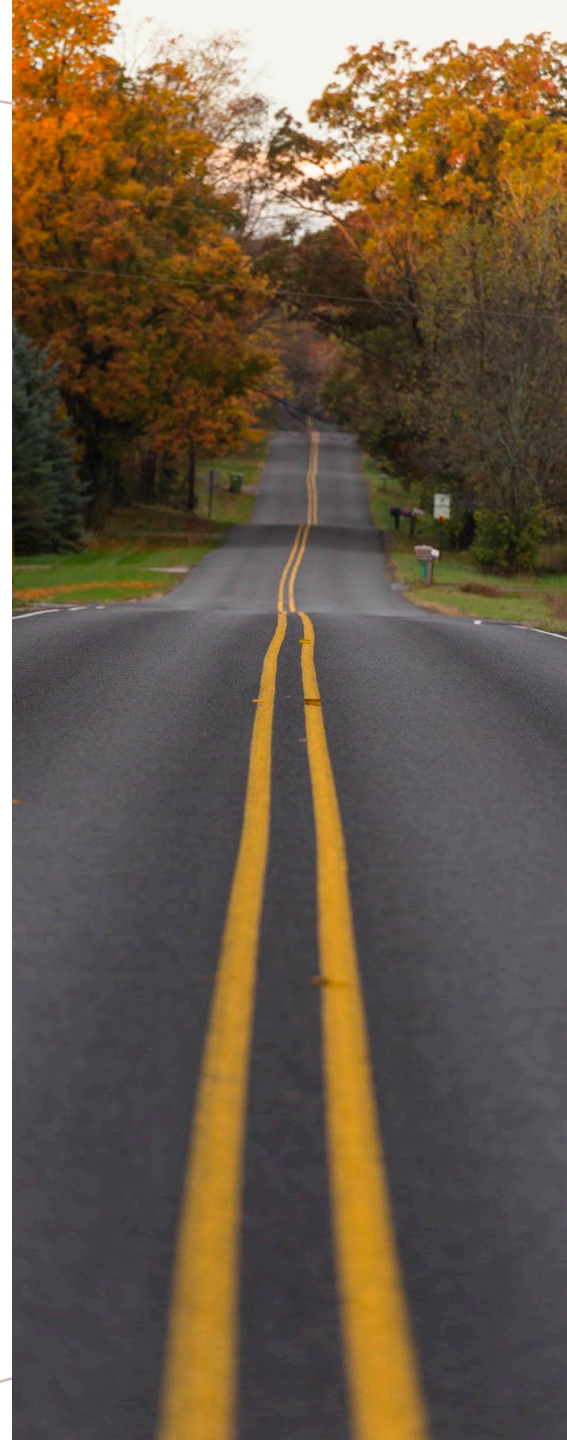
2025
LAP
EARMARK
FUNDS

State Earmark Projects

(so far)

23 Projects

- \$55,250,000



2024 LAP EARMARK FUNDS

State Earmark Program

- 20 Projects
- \$104,600,000

Federal Earmark Program

- 14 Projects
- \$26,738,000



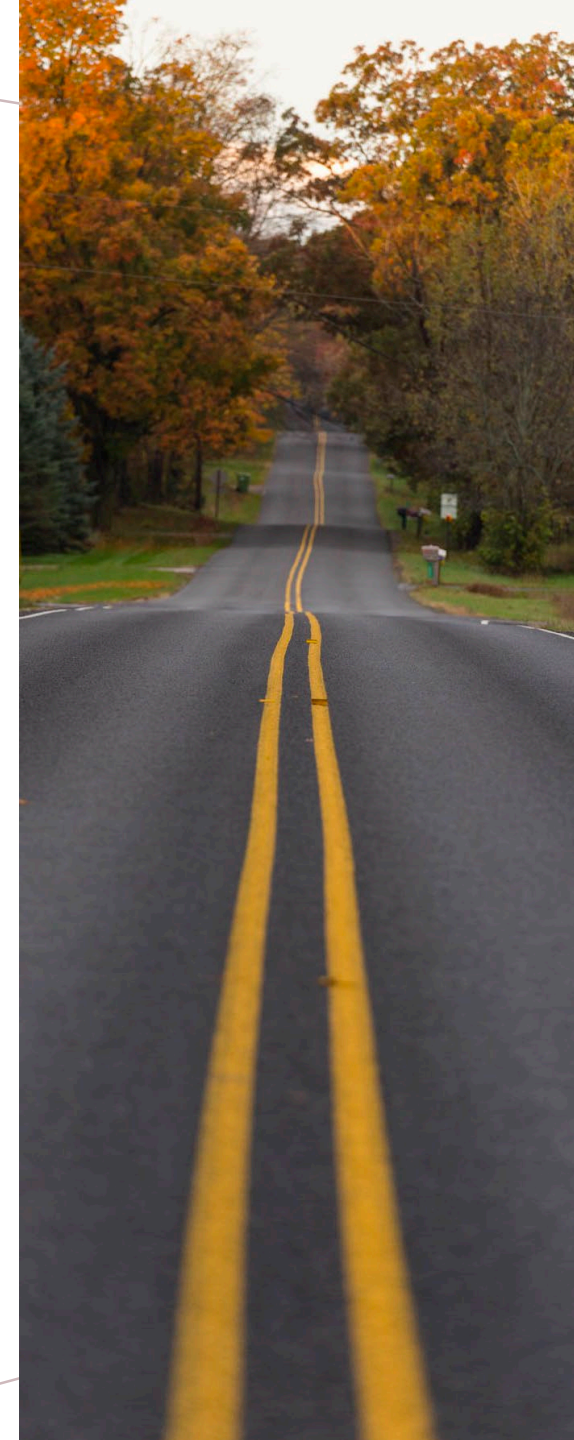
2023 LAP EARMARK FUNDS

State Earmark Program

- 1 Project
- \$12,000,000

Federal Earmark Program

- 26 Projects
- \$57,425,687



2022 LAP EARMARK FUNDS

State Earmark Program

- 7 Projects
- \$32,950,000

Federal Earmark Program

- 12 Projects
- \$12,065,062



EMERGENCY RESPONSE (ER)

- LAP works with Safety & Security and FHWA for qualifying Emergency Events to determine damage to local roads and eligible projects.
- LAP works closely with local agencies and the corresponding TSC's and Region staff.
- All eligibility is determined by FHWA.
- ER funds are given to eligible projects for all temporary repairs.
- ER funds are given to eligible projects for permanent repairs to restore road to same condition.





**Michigan Department of Transportation
Office of Economic Development
Grant Program Overview**

*Lindsay Ross,
Grant Coordinator*





Transportation Economic Development Fund (TEDF)



Enacted in 1987, the mission of the Transportation Economic Development Fund (TEDF) is to enhance the ability of the state to compete in an international economy, to serve as a catalyst for economic growth of the state, and to improve the quality of life in the state.

www.michigan.gov/tedf



Transportation Economic Development Fund (TEDF)



Funding Categories:

- A – Economic Development Road Projects for Target Industries
- B – Villages and Small Cities
- C – Urban Congestion Relief
- D – Secondary All-Season Roads
- E – Forest Roads
- F – Urban Areas in Rural Counties



*Categories C, D, & E are formula distribution
Categories A, B, & F are competitive programs through OED*





TEDF-A: Economic Development Road Projects



Target Industries:

- Manufacturing
- High-Technology Research
- Agriculture and Food Processing
- Office Centers \geq 50,000 sq. ft. (HQs)
- Tourism (year-round + out-of-state draw)
- Medical Research/Tourism \geq 50,000 sq. ft.
- Forestry
- Mining



Parameters:

- Immediate and Non-Speculative; *before a decision is made by the company.*
- About \$18 million/year for Category A; 20% match
- Eligible applicants include County, City, Village road agencies and MDOT





TEDF-B: Villages and Small Cities



Community Service Infrastructure Fund:

- Cities and villages under 10,000 population
- Eligible projects include preventative maintenance and reconstruction of roadways
- \$250,000 max grant request
- 50% cash match required
- Program re-authorized in 2023 for \$25 million
- Program priorities: per capita taxable value, paired with other projects, geographic distribution
- Annual call; FY26 applications due June 2025





TEDF-F: Road Projects in Urban Areas of Rural Counties



Category F Program Objectives:



- Provide system continuity with the secondary all-season road system
 - Improve access to state trunkline system
 - Coordinate with Category D routes
 - Improve safety and all-season capabilities
- \$2.5M annual; \$375,000 max grant; 20% match
- Annual call each spring May 1st application deadline
- Eligible applicants include county, city and village road agencies within the adjusted census urban area in counties with a population of less than 400k.





State Infrastructure Bank (SIB) Loan Program



- Revolving Loan Fund
- Designed to meet urgent project-financing needs, including emergencies
- Low-interest loans – Currently less than 4%
- 94 loans since 1997 totaling nearly \$80 million
- Flexible terms
- Road projects or transit facilities
- Most loans go to Act 51 agencies; transit agencies are eligible

www.michigan.gov/sib



Transportation Alternatives Program (TAP)



Federally funded program that provides funding opportunities for projects that enhance the intermodal transportation system, provide safe alternative transportation options, strengthen local economies, improve quality of life, protect the natural environment, and enhance transportation infrastructure.



TAP Eligible Funding Categories

- Active Transportation Facilities
 - Separated pathways
 - On-road bike lanes, sidewalks
 - Crosswalks, RRFBs, HAWK Signals
 - Traffic calming amenities in downtowns
 - Bike racks on buses
- Historic Preservation of Transportation Facilities
 - Historic bridges, railroads, brick streets
- Safe Routes to School



TAP



- About \$26 million/year appropriated to the statewide program
- 20% match required toward eligible construction. All other costs are the responsibility of the grantee
- Eligible Applicants – Act 51 agencies, transit agencies, federally recognized tribes, DNR.



TAP – Safe Routes to School



Safe Routes to School



- Federal TAP Funds
- About \$3 million/year
- Available to all schools, now including high schools
- School-based comprehensive planning process is a prerequisite for funding



www.saferoutesmichigan.org





Contact Us To Discuss Funding Opportunities

www.michigan.gov/mdot/Programs/grant-programs



Bay* & Superior Regions:

Lindsay Ross
(517) 242-3192

RossL7@michigan.gov

**For the TAP grant program only,
Caitlin Yost covers all 7 SEMCOG counties*



Grand & North Regions:

Julie Dennis
(517) 256-6524

DennisJ12@michigan.gov



Southwest & University* Regions:

Lance Brooks
(517) 648-8140

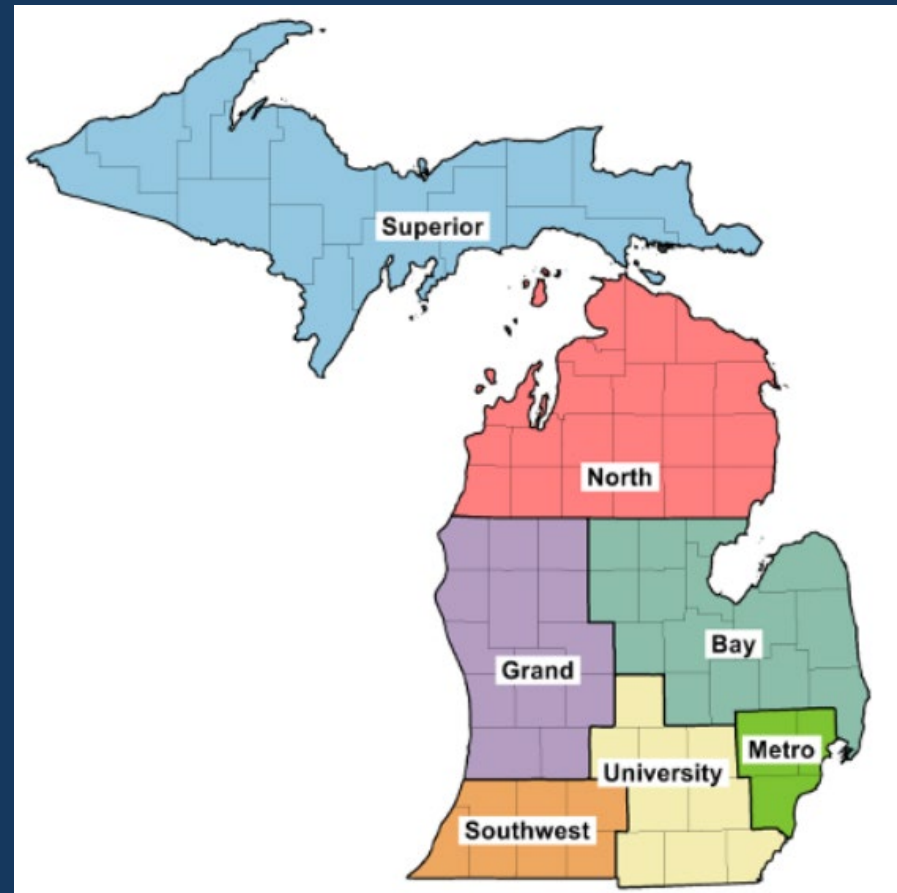
BrooksL@michigan.gov



Metro* Region:

Caitlin Yost
(517) 242-2395

YostC1@michigan.gov



Real Estate – SUPPORT

MDOT-LPA@Michigan.gov



Kem Hoopingarner
(517) 242-8334



Mike Christensen
(517) 335-4361

Contact (Call, Email, Teams, etc.)

- ROW Acquisition Process & Documentation
- Updates - New Regulation's & Policies
- Real Estate LPA Guidance Webpage



Real Estate – FHWA Update

Final Rule: June 3, 2024

FHWA Final Rule Recorded Webinars:

https://www.fhwa.dot.gov/real_estate/uniform_act/

- Increased Waiver Valuation Limits:
Uncomplicated < \$15,000 or \$35,000 for Governmental Entity
- If using a Waiver Valuation:
Person deciding to use a Waiver Valuation Understands valuation principles, techniques & use of appraisals – See Setting Just Compensation Authorization Form on Guidance webpage
- Increased Relocation Benefit Limits & Changes to Relocation Comparable Used

Real Estate - FHWA Update

Final Rule Continued

- Electronic Notification Requirements – Watch for Procedure Manual Update (2025)
- Uniform Act Applies if Property Rights Acquired are used in Project with Federal Aid – No Time Limit
- Emphasized No Coercive Actions

Real Estate

MDOT Updates & Reminders

- Attachment A (Program Application) – Extract/Submit once Real Estate Rights (temp or perm) known to be needed prior to starting negotiations
- NEPA Changes Coming (Categorical Exclusion)
- MDOT Real Estate Procedure Manual Updates (2025)
- Watch for 2025 Training (GovDelivery Real Estate Email):
 - MDOT: Procedure Manual & Final Rule Updates
 - FHWA: LPA Real Estate Training including NEPA (2 days)

Real Estate

MDOT Updates & Reminders Categorical Exclusion



- Acquisition with Relocations/displacements for residential or non-residential
- Acquisition with 4(f)/6(f) historic or recreation property, no matter the type or quantity
- Hardship or Protective Buying (Advanced Ac
- Applying for credit or reimbursement for ROW Acquisition
- Condemnation - Contact MDOT-LPA@Michigan.gov

MDOT Real Estate Training & Announcements

Join GovDelivery Email or Text:

<https://public.govdelivery.com/accounts/MIDOT/subscriber/new>

Email Updates

To sign up for updates or to access your subscriber preferences, please enter your contact information below.

Subscription Type **Email or SMS/Text**

Email Address *

Subscription Topics

- Jobs and Careers
- Contracting/Consultants
- Highway Development
- MTRIP Online
- Design
- Development Services
 - Construction Restrictions
 - Spring Weight Restrictions ⓘ
 - Excess Property Auction ⓘ
 - Local Agency Program ⓘ
 - Real Estate Updates - Local Public Agencies ⓘ
 - Real Estate Consultant Advisory - Acquisitions ⓘ
 - Real Estate Consultant Advisory - Appraisals ⓘ
 - Real Estate Consultant Advisory - Relocation ⓘ

- Highway Development
 - Development Services
 - Choose: Real Estate Updates – Local Public Agencies

Real Estate – SUPPORT

MDOT-LPA@Michigan.gov



Kem Hoopingarner
(517) 242-8334



Mike Christensen
(517) 335-4361

Contact (Call, Email, Teams, etc.)

- ROW Acquisition Process & Documentation
- Updates - New Regulation's & Policies
- Real Estate LPA Guidance Webpage



LAP ENVIRONMENTAL

Robyn Coole

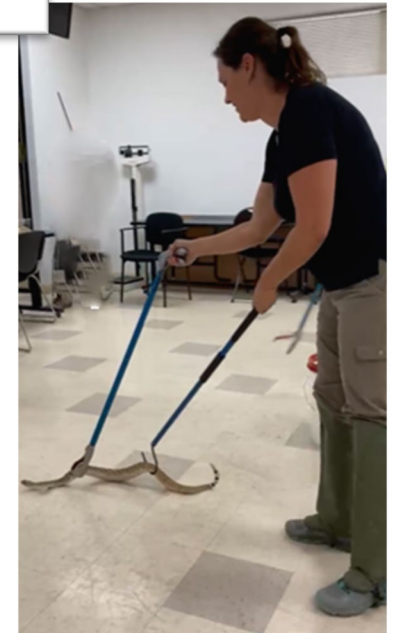
M.S. Biology
MDOT LAP May 2023

I can help you with that!

- DNR & FWS consultation & permitting
- Animal and Plant locations, surveys, minimization and mitigation
- Mitigation implementation that works for you



40



MDOT NEPA 2024 STATS (PHYSICAL YEAR)

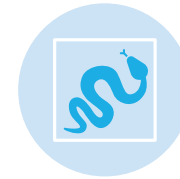
525 Jobs submitted

501 Jobs reviewed

405 Jobs approved



2 General Reviewers



1 Biologist



2 Archeologists



1 Historian



We are building the team to accommodate workload

Timing is Everything

TIPS FOR SUCCESS

- » Treat the first submission as a **DRAFT**.
- » Turn in **6 months** ahead of planned letting – 3 months ahead of GI submittal
- » **First come, first serve**. Project complexity is not always considered.
- » **Keep us updated!** Additional scope, limits, permits & surveys.
- » **Use our expertise**. We know NEPA, so you don't have to.

TURN IN 6 MONTHS AHEAD OF PLANNED LETTING

- MINIMUM 6 months, up to 1 year is okay!
- First come, first serve for NEW NEPA submissions.
- Project complexity is not always considered in review queue.
- Plan for NEPA to always be a minimum 90-day turn around for first review.
- Re-submissions for previously reviewed NEPA are always prioritized out of the queue (max 2-week turnaround).

WHY SO EARLY?

Surprise! A survey is required.

Surprise! You must change your scope to avoid significant impact.

Easy Recovery

Work Description Fails

Remove existing structure, construct proposed structure.

HMA paving and other activities as needed.

Mill and fill with detail 7 type repairs

Mis-Match

Cost estimates has work not in description (tree/stump removal)

EGLE permit has work not in description

106 and 5323 descriptions do not match.



NEPA reviewers are not engineers, please describe projects accordingly 😊

BIGGER Problems

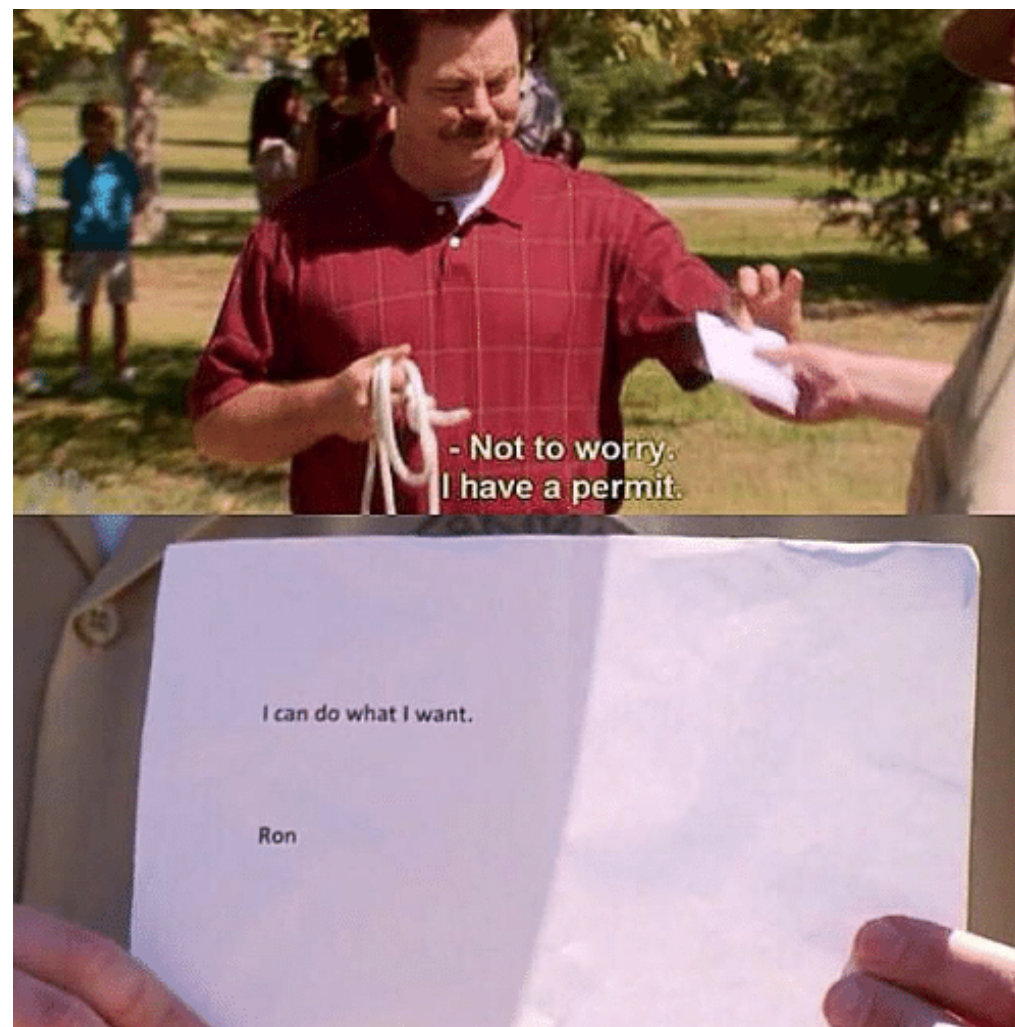
Completing any action associated with a federally funded project before NEPA review is complete (no matter the funding source)

- Tree Cutting / Stump Removal
- ROW Acquisition
 - 4/6 (f) property / Condemnation / Displacements

Adding/completing work or locations post review and not coming back for a re-evaluation.

Segmenting work

- Typically done by accident, but minimizes protentional impacts
- Phased project must be reviewed as whole
- Dropping work from scope to avoid consultation/survey but completing it later.





3 NEW SPECIAL PROVISIONS

1. Tree Removal and Clearing for Local Agency Projects
2. Wildlife Exclusion Fencing for Local Agency Projects
3. Eastern Fox Snake for Local Agency Projects

PURPOSE

- Streamline NEPA process
- Avoid consulting with regulatory agencies outside of MDOT
- Put environmental mitigation into construction terms

TREE REMOVAL AND VEGETATION CLEARING

WHAT: Tree cutting dates will always be *Oct 1 – March 31* across the state.

WHY: No longer based on a single species (as previously based only on bats). Migratory Bird Treaty Act

WHO: Any LAP project with Tree/vegetation removal over 3”



WILDLIFE EXCLUSION FENCING

WHAT: Specifications for installing and maintaining wildlife exclusion fencing, primarily used in Eastern Massasauga rattlesnake habitat.

WHY: Puts mitigation measures in construction terms and eliminates further consultation with FWS/DNR.

WHO: Any project in EMR habitat or when FWS or DNR requires fencing for other protected species of snakes and turtles.

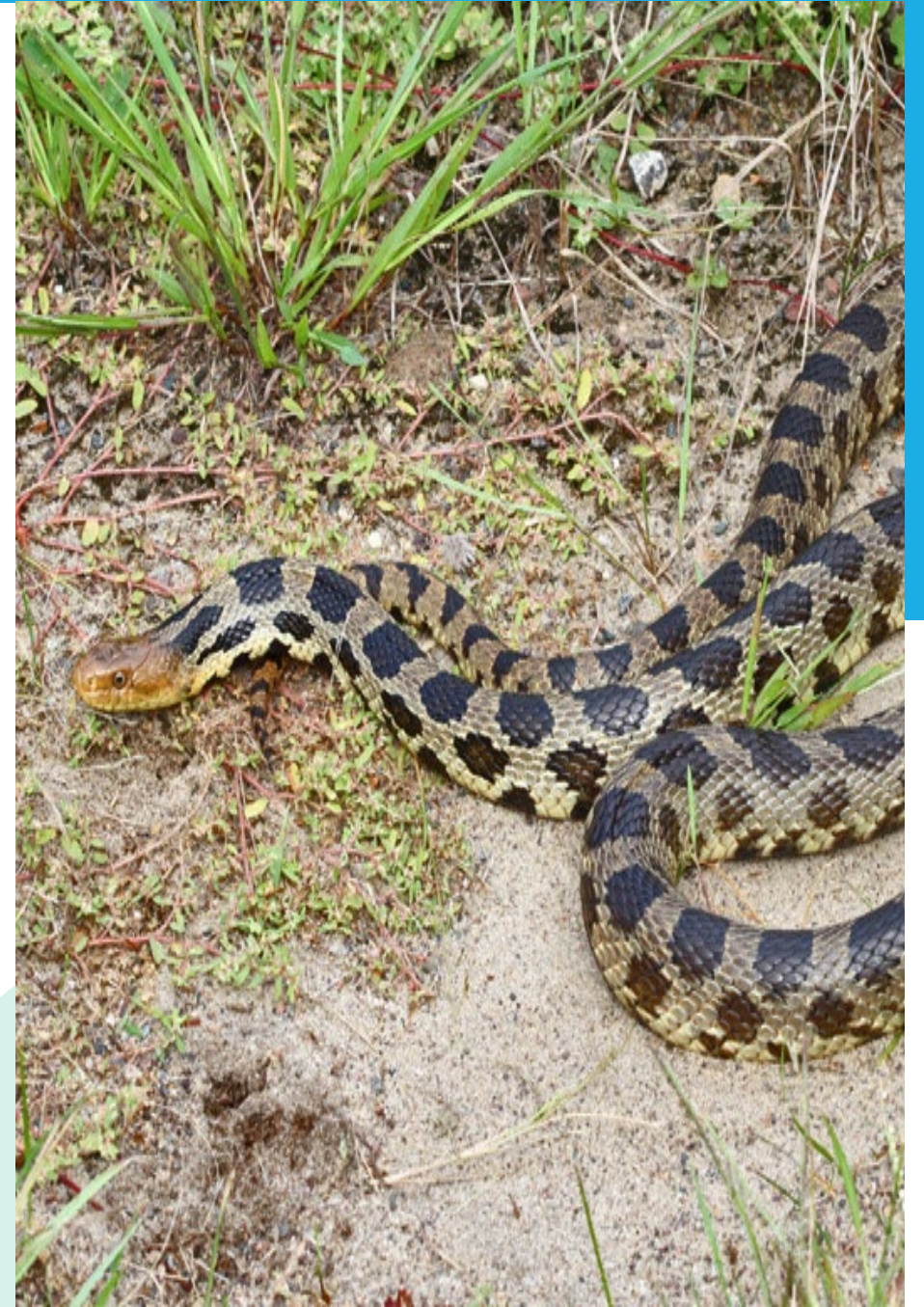


EASTERN FOX SNAKE

WHAT: Best management practices (BMP) when constructing in Fox snake habitat (similar to EMR SP).

WHY: Eliminates consultation with DNR when you can meet the BMPs of the SP.

WHO: Any project in Eastern Fox snake habitat (when the specie is listed on your state EGLE/MNFI species review).



FUTURE SPECIAL PROVISIONS

Turtle best management practices

- Spotted turtle Wood turtle Eastern box turtle Blanding's Turtle

Biological Construction Monitor

- Having a qualified person on the jobsite in lieu of other mitigation measures.

Suggestions Welcomed



- ✓ Mitigation is not a one size fits all
- ✓ Pre-scope projects
- ✓ Identify risks in your county
- ✓ Ask NEPA questions

Robyn Coole

Endangered Species NEPA coordinator
MDOT Local Agency Program

CooleR1@michigan.gov

517-335-0704

NEPA General Email

MDOT-LAP-NEPA-Reviews@michigan.gov



MDOT Local Agency Program Environmental Services Unit



Deena Woodward | 517-241-2445 | woodwardd2@michigan.gov
LAP Environmental Supervisor

NATURAL RESOURCES

Robyn Coole | 517-335-0704 | cooler1@michigan.gov
Endangered species NEPA coordinator

Janet Arcuicci, AICP | 517-281-7629 | arcuiccij@michigan.gov
LAP NEPA coordinator

Mahreen Nabi | 517-897-7543 | nabim@michigan.gov
LAP NEPA coordinator

General Email | MODT-LAP-NEPA-Reviews@michigan.gov

CULTURAL RESOURCES

Patty Jo Korzeniewski | 517-582-3232 | korzeniewskip@michigan.gov
Lead Archeologist

Bradley Bellinger | 517-335-1921 | bellingerb1@michigan.gov
Archeologist

Brian Grennell | 517-388-5838 | grennellb@michigan.gov
Historian

General Email | MODT-LAP-SECTION106-Reviews@michigan.gov

LAP Website Updates - www.michigan.gov/mdotlap

Local Agency Program

Home > Business > Local Government > Local Agency Program

The Local Agency Program (LAP) administers the local allocation of federal and state aid programs (road, special funding, and bridge). The program is responsible for the development of statewide processes for the implementation of all required state and federal regulations as it relates to local agencies. It is also the owner of Local Agency Program Management System (LAPMS) and Local Agency Reimbursement System (LARS).

Contacts

[Bruce Kadzban](#), P.E. | 517-449-8689
LAP Section Administrator

[John Welch](#), P.E. | 989-284-8906
LAP Statewide Project Engineer

[Kristen Sullivan](#) | 517-335-1209
LAP Earmark and Automation Analyst

LAP engineer contact map



Click the map to view LAP contacts by county.



Guidance and reports

[FY 2025 Project Planning Guide](#)

[FY 2024 Project Planning Guide](#)

[NEPA guidance](#)

[Real Estate guidance](#)

[Force Account and Obligation reports](#)



Doing business

[Local Agency advisories](#)

[Request a ProjectWise folder](#)

[Local Agency forms](#)

[Design](#)

[Consultant selection](#)

[Permits and utility coordination](#)



Federal resources

[FHWA Emergency Relief Program video](#)

[FHWA Emergency Relief flow chart](#)

[USDOT Navigator website](#)

[Federal Aid Buyout Program](#)

Programs



Road Program



Bridge Program



Special Funding Program





About MDOT

The Michigan Department of Transportation (MDOT) is responsible for Michigan's nearly 10,000-mile state highway system, comprised of all M, I, and US-routes. It is the backbone of Michigan's 120,000-mile highway, road and street network.

Providing the highest quality integrated transportation services for economic benefit and improved quality of life.

Region Offices






MDOT has seven region offices and several geographically located Transportation Service Centers (TSCs) in each region that handle transportation-related construction and maintenance programs. The TSCs are designed to respond to the transportation needs of local communities for the highest level customer service.









[MDOT Regions and TSCs >](#)

Sign up for e-mail from MDOT

doyler3@michigan.gov

Submit

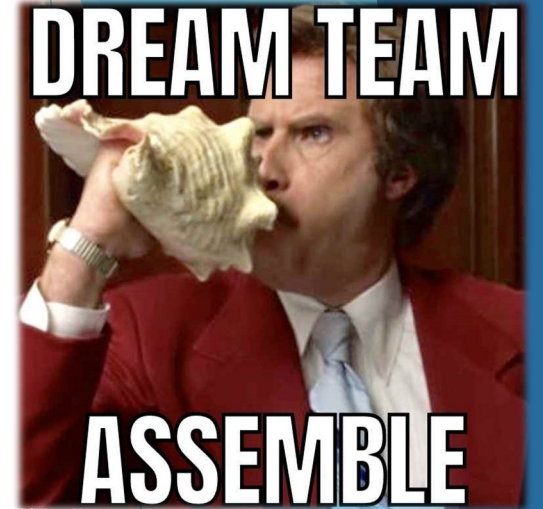
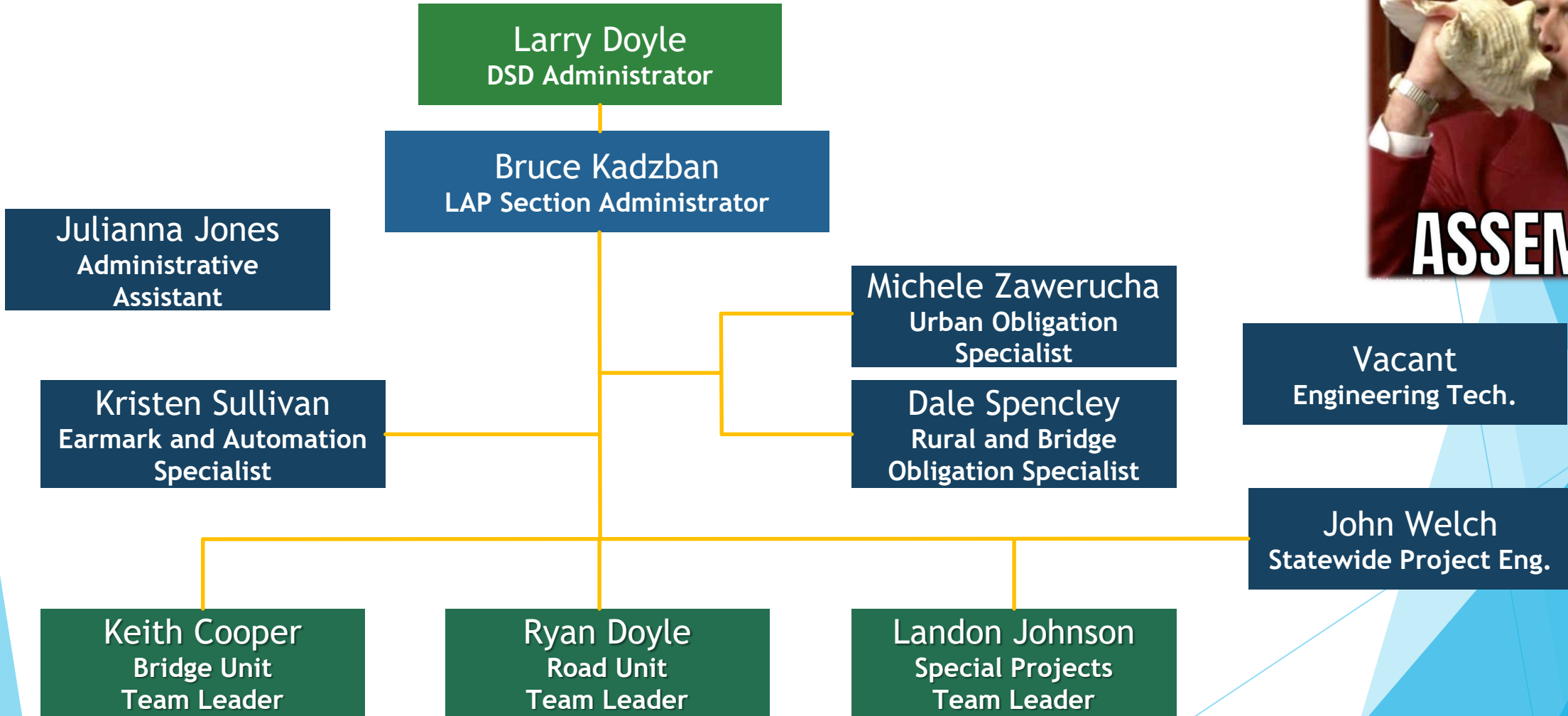
- es 
- perating Reference Stations (CORS) 
- es 
- pport - External 
- ates 

- Planisware 
- Road/Bridge Design Publications 
- Special Provision Advisory 
- Traffic & Safety 
- Development Services
 - Construction Restrictions
 - Excess Property Auction 
 - Local Agency Program 
 - Real Estate Updates for Local Public Agencies 
 - Spring Weight Restrictions 

LAP LISTSERV Registration

- ▶ Bottom of any MDOT page to start
 - ▶ Find LAP under “Development Services” toward the bottom

LAP Staffing Changes and Realignment



Road Unit

Ryan Doyle
Road Unit Team Leader

Brian Chomas
Urban Road
Area Engineer

George Masinda
Urban Road
Area Engineer

Amy Zokvic
Urban Road
Area Engineer

Brent Schriener
Urban Road
Area Engineer

Michael Seling
Rural Road
Engineer



WELCOME TO THE BEST TEAM
EVER

Bridge Unit

Keith Cooper
Bridge Unit
Team Leader

Tim Barry
Bridge
Area Engineer

Bob LaFrance
Bridge
Area Engineer

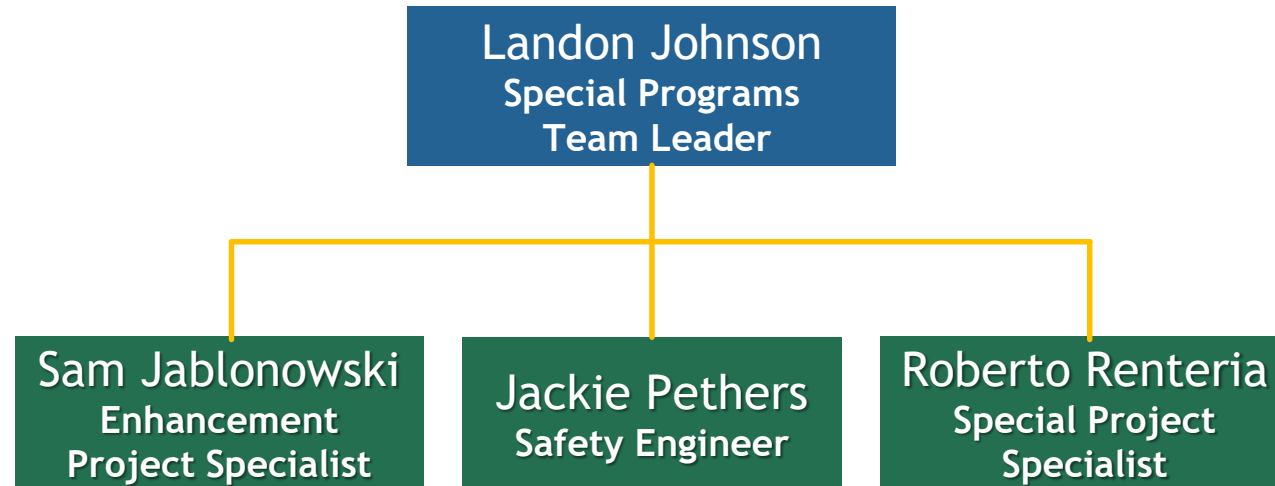
Rita Levine
Statewide Letting
Specialist

THE TRUSS YOU PUT IN A BRIDGE



CAN LEAVE YOU IN SUSPENSE

LAP Special Programs Unit



New Forms

New Design Exception (DE26-LA) and Design Variance (DV26-LA) Forms

New Third Party Forms

- 5108L - Certificate of Overhead Cost Rate 5108L
- 5101B-LAP - Derivation of Prime Consultant Costs 5101B-LAP
- 5101C-LAP - Derivation of Subconsultant Costs 5101C-LAP

DESIGN EXCEPTION REQUEST - LOCAL AGENCY

This Information Fulfills Requirements of the Federal Highway Administration.

This form must be added to OneSpan for signatures by the LAP Engineer or Specialist.

I. PROJECT DESCRIPTION (FILL IN PROJECT INFORMATION AND PROVIDE A BRIEF WRITE-UP OF PROJECT AND LIMITS)						
CONTROL SECTION(S)	JOB NUMBER(S)	LOCAL AGENCY NAME				
CONSTRUCTION GUIDELINE <input type="checkbox"/> 3R <input type="checkbox"/> 4R <input type="checkbox"/> 3R & 4R	NATIONAL HIGHWAY SYSTEM <input type="checkbox"/> YES <input type="checkbox"/> NO	ESTIMATED LETTING DATE				
LOCATION OF PROJECT						
PROJECT DESCRIPTION (as programmed)						
II. LEGAL SPEED AND EXISTING AND FUTURE TRAFFIC VOLUMES						
POSTED SPEED mph	DESIGN SPEED mph	Ex ADT	PROJECTED ADT	Ex % COMM.	FIX LIFE Years	PROJECTED % COMM.
III. DESIGN EXCEPTION FOR THE FOLLOWING ELEMENT (IDENTIFY LOCATION BELOW)						
ELEMENT: <input type="text" value="Select from drop down menu"/>						
Describe existing roadway/bridge geometric features including element values for each exception location (Identify locations by station).						
Design criteria for these features (Provide the appropriate references, including the chapter, page and design values):						
MDOT CRITERIA			AASHTO CRITERIA			
Proposed design values for the exception element (Identify what design speed and appropriate dimensions this treatment meets if applicable).						

From Bruce Kadzban, Local Agency Program Section Administrator

Local Agency Provided Materials

Direct questions and inquiries regarding this Advisory to:

MDOT
Development Services Division
Local Agency Program
www.michigan.gov/mdotlap

Ryan Doyle, PE
MDOT Local Agency Program
Cell 989-220-9447
DoyleR3@Michigan.gov

Due to increases in material lead times, MDOT Local Agency Programs (LAP) has received numerous questions about ways agencies can order materials (i.e. watermain, guardrail, poles, ITS equipment, etc.) in advance and provide them for a project.

Unfortunately, the FHWA does not allow this for any participating cost or pay items on federally funded projects. This includes force account purchases, as well as agency provided materials for participating pay items.

The only method for local agency provided materials on federally funded projects is if they are non-participating items, along with the following requirements:

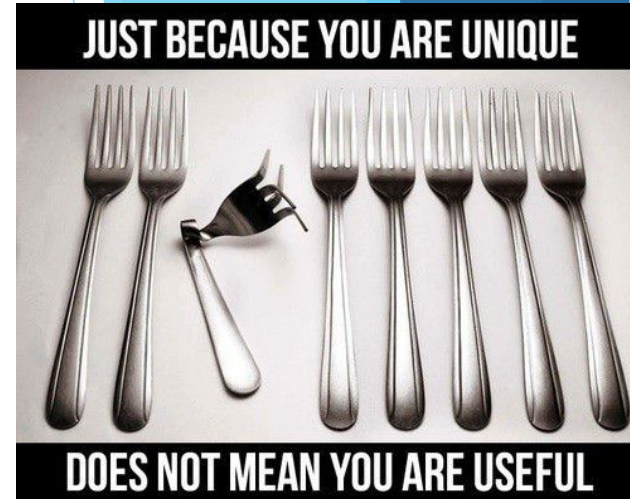
1. The Local Agency must submit a Public Interest Finding supporting the request, and it must be approved by MDOT.
2. There is no Federal participation for the cost of the material or any related costs to the project. This would include, but is not limited to, costs related to delays, extensions of time, or claims related to the use of the material.
3. Local Agency provided materials must meet and comply with the Special Provision for Buy America. It is highly recommended that the local agency have the materials on hand, along with all paperwork/certifications prior to obligation of the project.

LAP recommends avoiding local agency provided materials due to the inherent risks.

Therefore, it is even more important to plan early and get projects in as soon as

Unique Special Provisions (SPs)

- ▶ Use MDOT Previously Approved SPs whenever possible
- ▶ Unique SPs must have Local Agency Programs (LAP) Approval
 - ▶ Do not need to be re-approved
 - ▶ Questions added to the Program Application
- ▶ Some SPs require **MDOT & FHWA approval** prior to use
 - ▶ HMA/Concrete QA, New/Experimental Products or Processes
 - ▶ Use of Unapproved Processes/Materials risks the loss of up to all the federal aid on a project.



UNIQUE SPECIAL PROVISIONS

MDOT must approve all Unique Special Provisions (USP's) before use in projects. Also, FHWA must approve USP's related to Hot Mix Asphalt (HMA), Concrete Quality Assurance/Acceptance, and new or experimental design elements, products or materials, or construction methods, before use.

Does this project propose using any design elements, items or materials, or construction and testing methods that are not according to AASHTO or MDOT design standards, or are not included in the current MDOT Standard Specifications for Construction?

Yes No

This project includes Unique Special Provisions (USP) and unique special pay items.
If "yes", have such USP's been previously approved by MDOT, and FHWA if required?

Yes No

Odds & Ends

- ▶ Updated Federal Eligibility Guidelines - To be Released Soon
- ▶ AASHTOWare Required with April 4th, 2025 Letting
- ▶ Signal and Structural Design
 - ▶ Must meet the current version of AASHTO LRFD Specifications for Structural Supports for Highway Signs, Luminaires, and Traffic Signals First Edition with Interim Updates (AASHTO LRFD LTS-1)
- ▶ Preventative Maintenance (PM) Projects
 - ▶ Designed to preserve the existing pavement and base/give extended life without undertaking reconstruction or major rehabilitation
 - ▶ 1.5” or less (2” by approval only)
 - ▶ No widening/3R work
 - ▶ Not for fixing structural deficiencies (rutting, etc.)
 - ▶ Approved Treatments listed in the *LAP Guidelines for Geometrics*

New & Experimental Materials/Processes

- ▶ Not allowed without FHWA Approval
 - ▶ Not even allowed as non-participating
 - ▶ Makes all work within the section non-participating
- ▶ Pilot Project Request must include a Workplan:
 - ▶ Description of the Experimental Process
 - ▶ Evidence material will exhibit long-term stability under conditions
 - ▶ Control Section for Comparison (usually adjacent)
 - ▶ Long-Term Performance Monitoring Plan
 - ▶ Crucial to establish cost-effectiveness
 - ▶ QA/QC/Acceptance Specifications
 - ▶ Timeline including Final Report Issuance



Scrap Tire & Rubberized Asphalt/Products

- ▶ Must follow the Experimental Product Approval Process
- ▶ Changes during construction must be approved!



Local Bridge Program 2025 Call For Applications

Sent out in February to CRA and MML - Call for FY 2028 Construction

NEW: Limit of 3 Applications per Local Agency

- Multiple PM's count as 1 application

Application Deadline - April 1st, 2025

Local Bridge Program Website

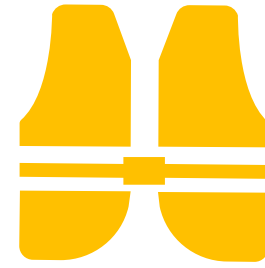
- Call Letter/Instructions
- Call for Applications - Submission sheet
- Est. Worksheet - Revised (Feb 2024)
- 2024 Selected Projects for FY 2027



PRODUCTIVITY

Don't worry boss. I'm on top of that project!

MDOT Local Safety Program *Overview*



Federal funds administered by MDOT

Open to all Act 51 agencies and federally recognized tribal groups

Annual competitive Call for Projects (CFP)

- Call announcement Posted (LAP Website)
- Applications due **May 1, 2025**
- Awards and programming in **September 2025**

LAP Obligation Show Stoppers

NEPA not approved

ALL PROPERTY not under Local Agency control

RAILROAD issues not resolved

PROJECT not approved in S/TIP

FUNDING exceeds TIP 25% threshold (+/-) or not yet approved

LIMITS AND/OR SCOPE do not (or no longer) match TIP

PERMITS not issued

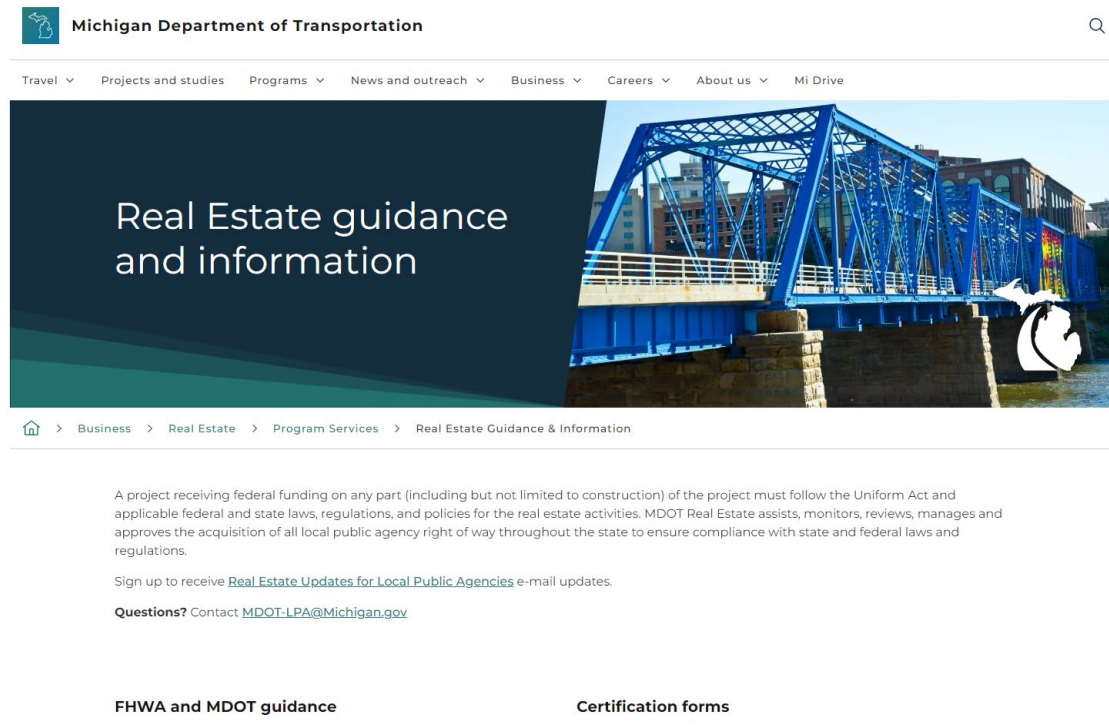
NO FISCAL YEAR allocation or obligational authority remaining



Right-of-Way (ROW) Process

- ▶ Be aware if you have not provided ROW services on your project in awhile, there are some new processes and forms
- ▶ If you haven't had a chance, go to the real estate section of MDOT's Website, do so at:

[Real Estate Guidance & Information webpage](#)



The screenshot shows the MDOT website header with the logo and navigation menu. The main content area features a large image of a blue steel truss bridge over a river. A dark blue overlay on the left side of the image contains the text "Real Estate guidance and information". Below the image is a breadcrumb trail: Home > Business > Real Estate > Program Services > Real Estate Guidance & Information. The main text block contains a paragraph about federal funding requirements, a sign-up link for "Real Estate Updates for Local Public Agencies", and a contact email "MDOT-LPA@Michigan.gov". At the bottom, there are two links: "FHWA and MDOT guidance" and "Certification forms".

- ▶ Start ROW process early and understand if you are not trained in Real Estate acquisition what you are taking on
- ▶ This applies to both permanent takes and temporary grading permits

Right-of-Way (ROW) Process

▶ As you can see, lots of guidance provided

FHWA and MDOT guidance

[23 CFR Parts 635, 710, 810](#)

[49 CFR Part 24 - Uniform Act](#)

[FHWA Real Estate Acquisition Guide for Local Public Agencies*](#)

[FHWA LPA toolkit](#)

[Michigan Uniform Condemnation Procedures Act](#)

[MDOT Real Estate Procedure Manual*](#)

Quick reference and checklists

[Parcel submittal checklist](#)

[Guidelines for Appraisal Reviews](#)

[Real Estate Quick Reference Guide \(Update in process\)*](#)

[Waiver Valuation - 3 Approved Methods*](#)

[Waiver Valuation Report Differences](#)

[Water Service Replacement Quick Reference](#)

Booklets for property owners

[FHWA Acquiring Real Property for Federal-aid Programs and Projects*](#)

[Public Roads and Private Property Booklet*](#)

[Your Rights and Benefits Booklet*](#)

Training

[NHI Course 141045 - Real Estate Acquisition under the Uniform Act](#)

[NHI Course 141047 - Local Public Agency Real Estate Acquisition](#)

Certification forms

- [Waiver Valuation - Preparer Certification**](#)
- [Water Service Certification](#)

Sample forms

- [Administrative Settlement](#)
- [Compensation Summary Statement](#)
- [Consent \(Temporary rights\)](#)
- [Donation of Compensation](#)
- [Donation in Exchange](#)
- [Easement - County Drain](#)
- [Easement - Highway](#)
- [Easement - Sidewalk](#)
- [Good Faith Offer LPA \(Under threat of condemnation\)](#)
- [Memorandum of Negotiations example](#)
- [Memorandum of Negotiations](#)
- [Preliminary Interview](#)
- [Project Spreadsheet example](#)
- [Release of Damage LPA](#)
- [Relocation Eligibility Notice](#)
- [Relocation-Business Claim](#)
- [Relocation-Payment in Compliance with PA 367/PA 439](#)
- [Relocation-Principal Residence Compensation worksheet](#)
- [Relocation-Replacement Dwelling Certification](#)
- [Relocation-Replacement Housing Determination \(625B\)](#)
- [Relocation-Replacement Mobile Home Determination \(625D\)](#)
- [Relocation-Replacement Rental Determination \(625C\)](#)
- [Relocation-Residential Claim](#)

Special Provisions

subsection

CITY OF SOUTHFIELD

section

SPECIAL PROVISION
FOR
SANITARY SEWER MANHOLE COVER, ADJ, CASE ____

OHM:amb 1 of 2 05/02/23

a. Description. This work shall consist of adjusting an existing sanitary sewer manhole cover as shown on the plans by removing and setting it to the proper elevation. Case 1 applies to structures located within the proposed pavement. Case 2 applies to structures outside existing pavement, curb, curb & gutter or within the existing pavement at locations where the pavement is shown to be removed in accordance with Subsection 204 of the Michigan Department of Transportation (MDOT) 2020 Standard Specifications for Construction.

b. Materials. The materials required to accomplish this work shall be in accordance with the applicable portions of Section 403.02 of the MDOT 2020 Standard Specifications for Construction and the City of Southfield Detail Sheet for Sanitary Sewer Construction in plan set.

Existing castings shall be reused. New frames and covers, if required due to damage to the existing casting, shall be supplied by the City of Southfield

c. Construction Methods. All work shall be done in accordance with the applicable portions of Section 403.03 of the MDOT 2020 Standard Specifications for Construction, the

- ▶ Anyone notice review comments coming back on Special Provisions that have been accepted in years past?
- ▶ There has been an effort to update LAP style special provisions, eliminating verbiage that has been deemed repetitive

Lump Sum Items

- ▶ Are lumps sum bid results hurting anticipated overall cost?
- ▶ Any changes from MDOT forthcoming?
- ▶ Is it possible create a Special Provision for lump sum pay items that limit cost?

Mussel Surveys - Know Your Timeline!

Group 1 or Unlisted

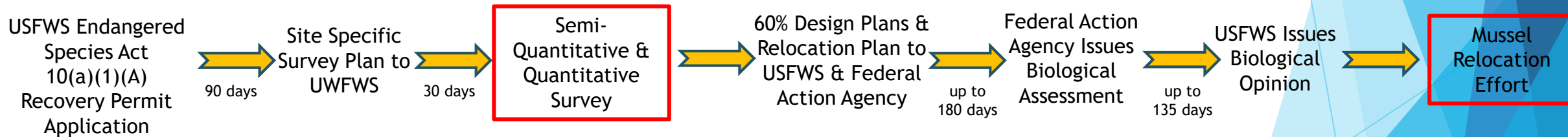


Actions in a red box **MUST** be completed within the Michigan mussel survey window of June 1-October 15.

Group 2 + Group 1 Requirements



Group 3 + Group 1 & Group 2 Requirements



Other Important Considerations:

Mussel surveyors must be certified in the State of Michigan to complete this work.

Mussel surveys and relocations are valid for five years.

Costs can range from a few thousand to a few million dollars depending on project area and type.

If you are working under the Ordinary High Water Mark, **YOU NEED A MUSSEL SURVEY.**

Bottom Line:

Consulting a mussel professional **EARLY** in the project planning (or even bidding) process can save your project timeline from delays and your project budget from large surprise costs.

TIP over the 25% Threshold

- ▶ Remember at final submittal, be sure to check the final estimate and see how your Total Cost compares to your funding amounts.
- ▶ Remember, the ratio is based on 25% of the Total Cost, not just the Participating cost.
- ▶ So, if your client decides to add a no-participating water main to the project, this will affect your ratio. Remember to go back to your MPO to adjust the TIP if your project is over the 25%.

When is Federal Money Available for Your Project

- ▶ MDOT's Fiscal Year - remember the fiscal year is Oct. 1 - Sept 30.
- ▶ If you look to obligate a project early, and maybe start work in the late fall or winter early in MDOT's Fiscal Year, the federal money at the start of the fiscal year doesn't become available until usually in Nov.

AASHTOWare

- Coming for New Projects in LAP this summer
- For those who haven't used it, be prepared that it may take more time than Field Manager
- Questions/Concerns?

CPE's (Contractor Performance Evaluations)

- Are CPE's going away with AASHTOWare?
- Any frustration with the CPE process?
- Discussion/Questions?

Surface Restoration at End or Season

- Use regular seed from April 15 to Oct. 10
- Use dormant seed after Nov. 15
- Confusion on what to use between these dates
- Seeding after Nov. 15, what if it doesn't take, have to pay a second time?
- Discussion/Questions?

Progress Clause and Open to Traffic

- Be sure to define what Open to Traffic means in your Progress Clause
- It can be more than “All lanes Open to Traffic”
- Define status of any traffic signal work in terms of Open to Traffic
- Discussion/Questions?



ON THE HORIZON

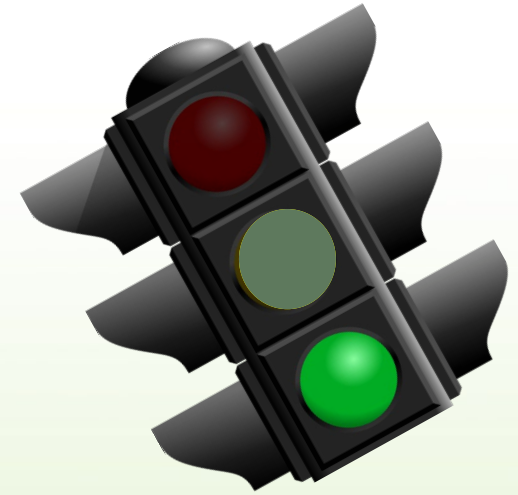
What's coming

Special Projects

- Award FY 2027 Safety Program projects
- About 10 Safe Routes to Schools projects
- At least 40 Enhancement (TAP) projects
- Bridge Program is working to select and award its FY 2028 projects



What's coming

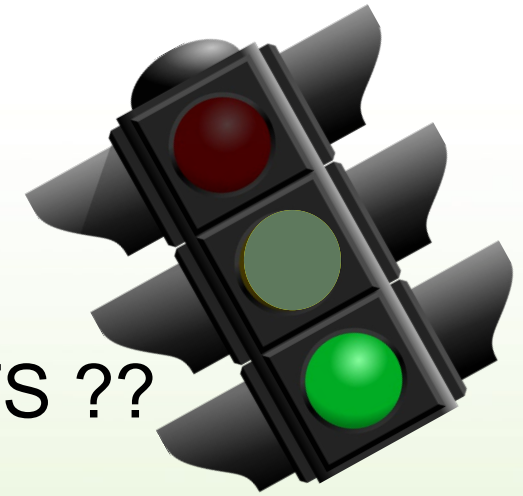


Special Projects

- Federal and State Earmark projects
- Projects resulting from several RAISE grants
- “Truck Stop of the Future”



What's coming



EMERGENCY RESPONSE PROJECTS ??

Several resources

Emergency Response playbook

MDOT LAP

MDOT Safety & Security office



LAP EMERGENCY RESPONSE PROGRAM

Have you had a natural disaster declared an emergency event and your local agency is receiving Emergency Relief Funds?

Contact:

Kristen Sullivan
LAP Earmark and Automation Analyst

SullivanK4@Michigan.gov

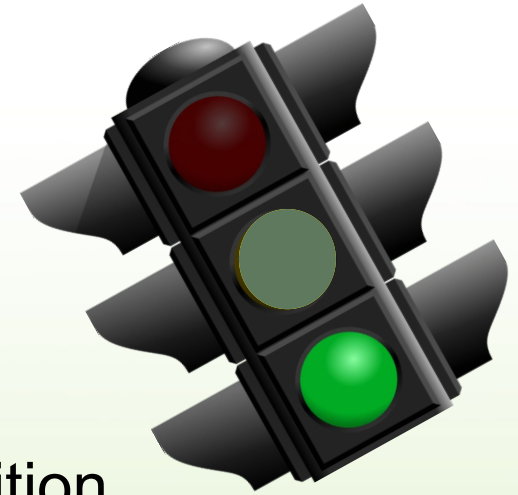
517-335-1209



What's coming

Program Updates

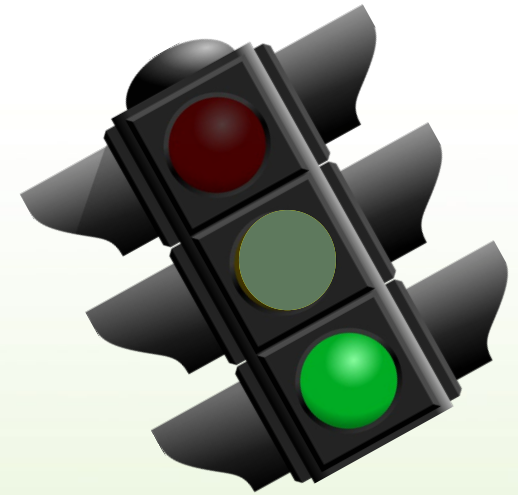
- Clarification / update on property acquisition
- Updates to NEPA and Section 106 Forms
- MDOT Eligibility Guidelines



What's coming

Along with

- The rest of the standard program (over 400 bridge, urban, and rural projects)



Federal Funding

Current Continuing Resolution through March 14, 2025

Waiting on passage of final federal budget

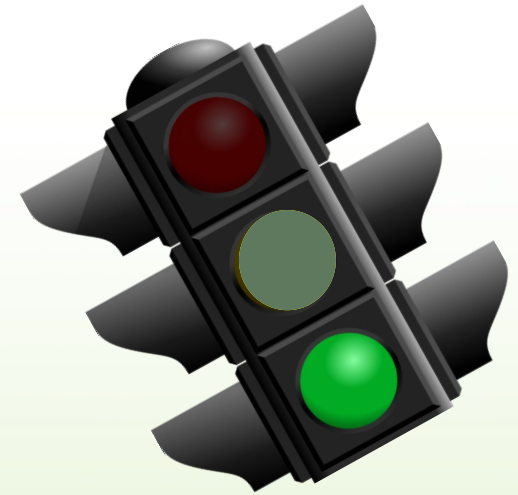


Caution:

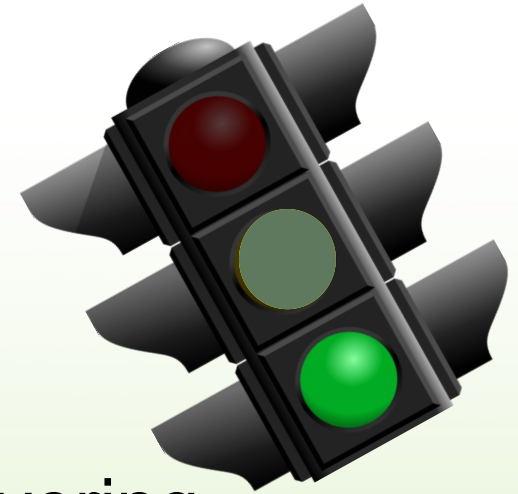
Federal Budget and programs are not approved or authorized

Federal program changes daily!

MDOT will wait for final confirmation from FHWA then will notify our partners



Emphasizing Communication:



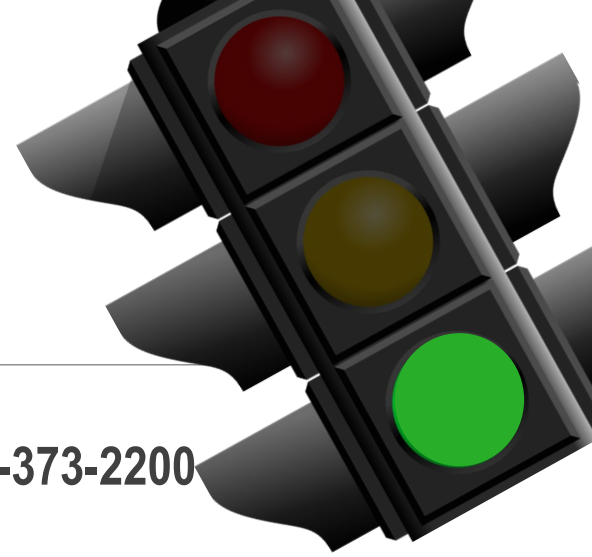
Local Agencies are responsible for delivering their own projects

30-day rule of thumb

Reply to MDOT's comments!



LAP CONTACTS



Larry Doyle – Administrator

doylel@michigan.gov

517-373-2200

Bruce Kadzban - LAP Supervisor

kadzbanb@michigan.gov

517-449-8689

Keith Cooper – Bridge

cooperk@michigan.gov

517-331-1395

Ryan Doyle – Road

doyler3@michigan.gov

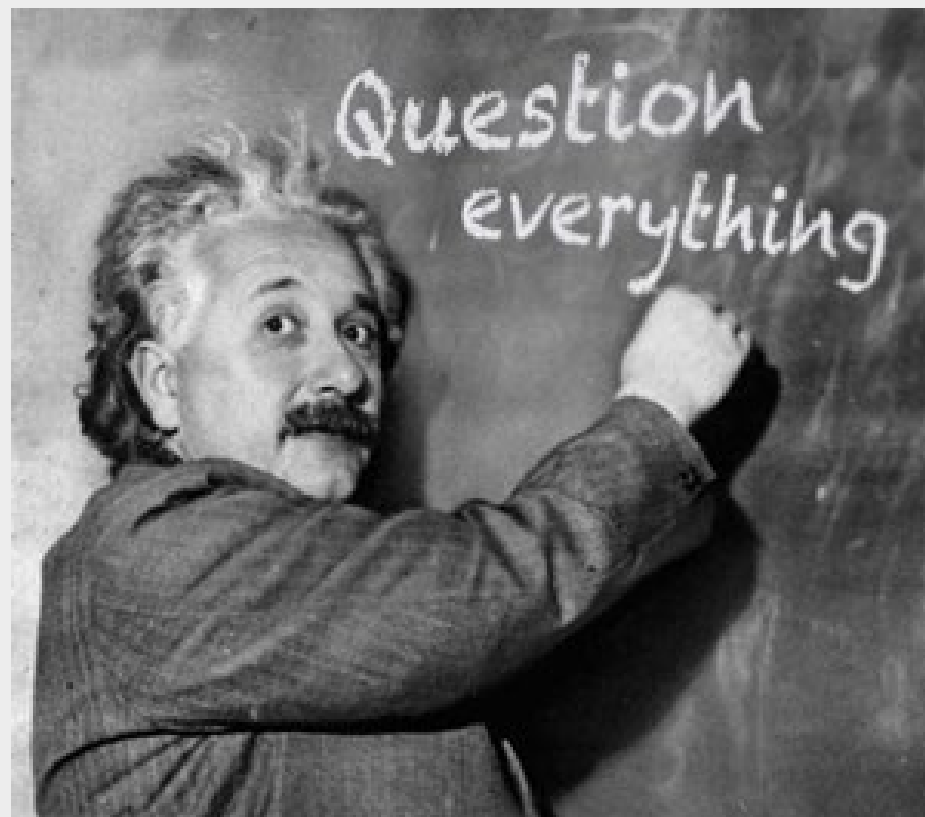
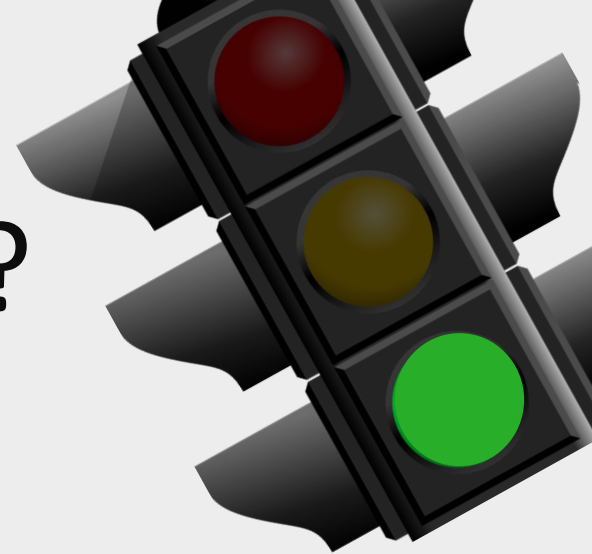
989-220-9447

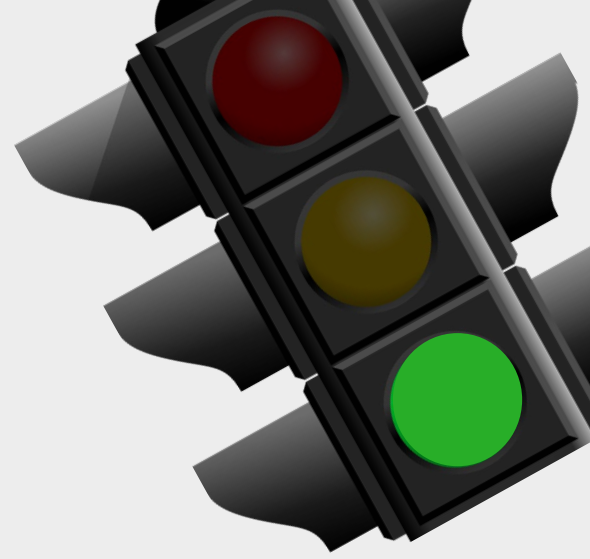
Landon Johnson – Special Programs

johnsonl26@michigan.gov

517-335-6779

QUESTIONS? COMMENTS?





THANK YOU!!