

Roadsoft Update

Nick Koszykowski
Sr. Project Manager
Center for Technology & Training



Roadsoft Update

- 2022 Work Plan
- 2023 Work Plan
- Framework Basemap Migration
 - V22 to v23
- Bridge Data Update
- Crash Data Update
- Training Update



2022 Work Plan (what we did)

- Custom Point/Line Module
- Road & Guardrail Custom Fields
- LDC Import/Export from Cloud
- MIRE Data Pull/Push
- Bridge Module Rewrite
- Framework Migration v21 to v22
- **Current Roadsoft/LDC Version: 2023.1**



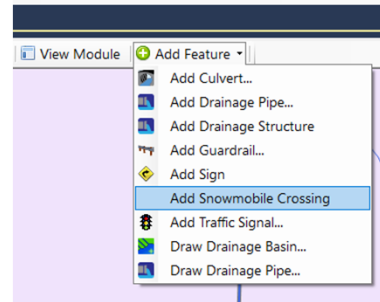
2022: Custom Point/Line Modules

- Gives user ability to create a 'user-defined' module for Point or Line assets
- Mix of how Drainage Network and Custom Fields work

A screenshot of the "Add Map Layer" dialog box in a software application. The dialog has a title bar with a close button (X) and a tabbed interface with four tabs: "Built-In Layers", "Custom Layer", "External Layer", and "Photolog Layers". The "Custom Layer" tab is selected. The "Name" field contains "Snowmobile Crossing". The "Type" section has two radio buttons: "Point" (selected) and "Line". The "Layer Icon" section shows a square icon placeholder and a text input field with a file selection icon. The "Appearance" section has two preview boxes: "Unselected" with a black plus sign and "Selected" with a yellow plus sign. Below these is a "Change" button. At the bottom right are "Create" and "Cancel" buttons.

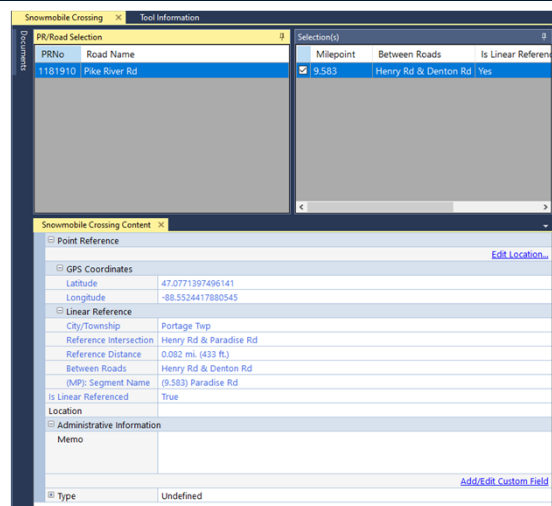
2022: Custom Point/Line Modules

- Gives user ability to create a 'user-defined' module for Point or Line assets
- Mix of how Drainage Network and Custom Fields work



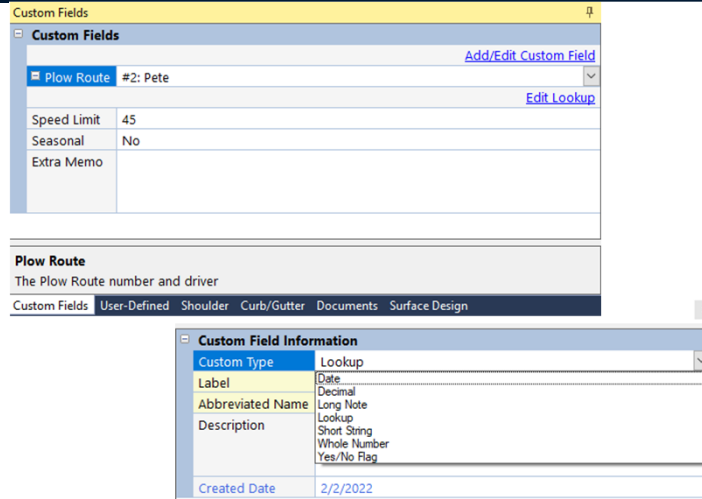
2022: Custom Point/Line Modules

- Gives user ability to create a 'user-defined' module for Point or Line assets
- Mix of how Drainage Network and Custom Fields work



2022: Road/Guardrail Custom Fields

- Multiple data types
- Filterable and available for legends



Custom Field	Value
Plow Route	#2: Pete
Speed Limit	45
Seasonal	No
Extra Memo	

Plow Route
The Plow Route number and driver

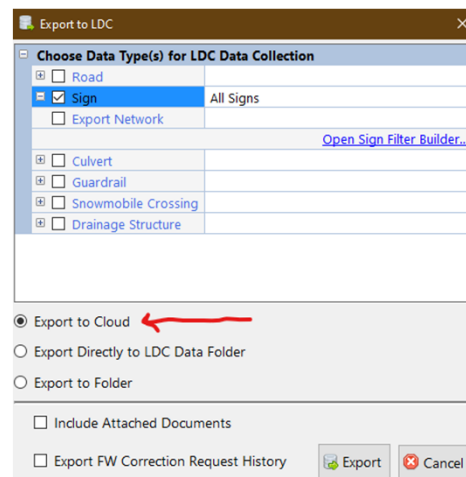
Custom Fields | User-Defined | Shoulder | Curb/Gutter | Documents | Surface Design

Custom Field Information	Value
Custom Type	Lookup
Label	Date
Abbreviated Name	Decimal
Description	Long Note
Created Date	2/2/2022



2022: LDC Import/Export from Cloud

- Transfer data to and from LDC via Cloud—no USB drive needed.



Export to LDC

Choose Data Type(s) for LDC Data Collection

Road

Sign All Signs

Export Network

Culvert

Guardrail

Snowmobile Crossing

Drainage Structure

Export to Cloud

Export Directly to LDC Data Folder

Export to Folder

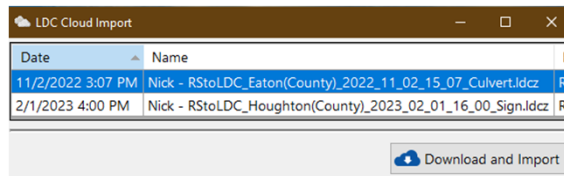
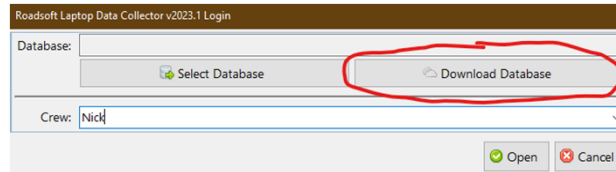
Include Attached Documents

Export FW Correction Request History

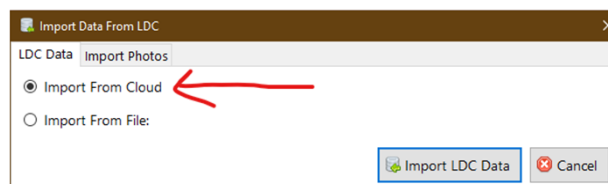
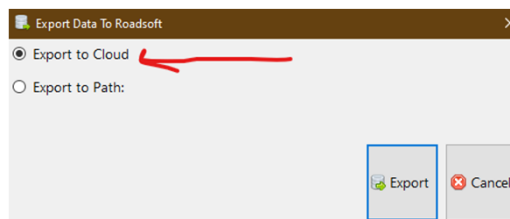
Export Cancel



2022: LDC Import/Export from Cloud – RS to LDC

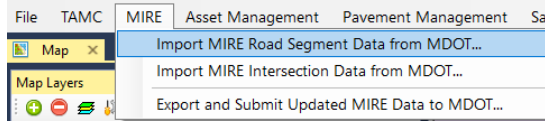


2022: LDC Import/Export from Cloud – LDC to RS



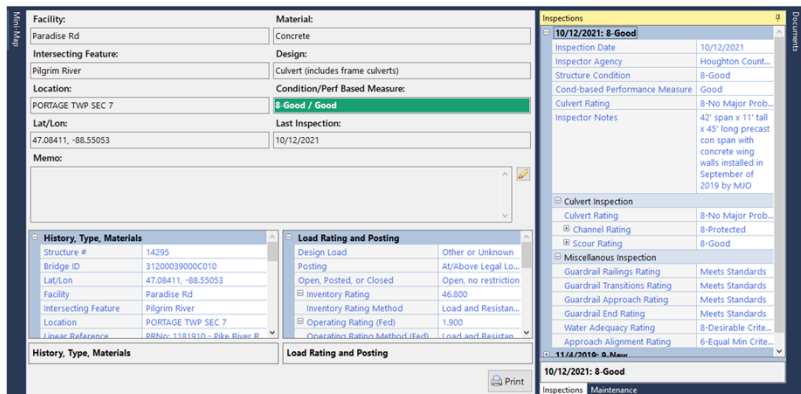
2022: MIRE Data Pull/Push

- Function to pull MDOT MIRE data into local DB
- Function to push updated local MIRE data to MDOT
- Includes:
 - MIRE Surface Type
 - Through Lanes
 - Median Type
 - Facility Type
 - Travel Direction
 - Access Control



2022: Bridge Module Rewrite

- Refreshed, updated, and simplified
- In line with MiBridge data which is the source of the data.



2023 Work Plan (what we are going to do)

- Map Annotation Layer
- Mobile Data Collection for Drainage Lines
- Traffic Count Module Custom Fields
- Point PMark Module Custom Fields
- Linear PMark Module Custom Fields
- Pavement Management Improvements



2022: Pavement Management Improvements

- Strategy/Optimization: Set an Avg PASER goal
- Strategy/Optimization: Set a Good/Fair/Poor goal
- Tools to identify bad/missing data
- Generate map/chart/report for a past year
 - For example, show me my paved network condition in 2016



Framework v23/Bridge/Crash Data Update

- 2023.3 will include migration from v22 to v23 of the centerline
- Bridge Data
 - Getting updated inventory and inspection data from MDOT. 2x yearly updates
- Crash Data
 - Reminder: Previous year (2022) data not available until April-June



Training Update

- Laptop Data Collector (2/28/23)
- RUG – What's New in Roadsoft (4/11/23)
- Intro to Roadsoft – The Basics (May)
- Not yet scheduled:
 - Advanced Roadsoft (Spring/Summer)
 - Utilizing Roadsoft for Asset Management (Fall)
 - Roadsoft Hands On Workshop (Fall)



MERL Updates

MERL Desktop
Current version: 2022.11



Road Conductor



Proposed Field Manager Replacement

- Field Manager 'sunsetting' in 3 years
 - When last job started in Field Manager is closed out
- InfoTech/MDOT will no longer support Field Manager
- MDOT cannot support local jobs in new AASHTOWare Project



Field Manager Replacement for Local Jobs

- Road Conductor
 - Web-based
 - Initial development funded by money from Counties, Municipalities, and MDOT
 - Additional development, support and training funded by fees
 - Managed by County Road Association



Road Conductor

- 18 months to implement initial phase
 - Begin with MERL Local Job Manager functionality
 - Add additional functionality from Advisory Group recommendations
 - Support for current Office Tech functionality minus Materials/Certs
- Additional year for Materials/Certifications and Mobile



Road Conductor

- Initial Core Functionality:
 - IDRs (Postings)
 - Change Orders (Contract Mods)
 - Pay Estimates
- Functionality Enhancements
 - Major and Minor tasks to bring the app in line with what Office Techs do now



Road Conductor: Timeline

- User Account Control and Core Functionality
 - Now through end of 2023
- Functionality Enhancements
 - Oct 2023 through June 2025
- User testing
 - Beginning mid-2024



Road Conductor: Timeline

- Materials/Certification Tracking
 - Spring 2025 through Spring 2026
- Mobile Application
 - 2025 through early 2026



Questions?

- Nick Koszykowski
- Sr. Project Manager
- MTU – CTT
- Roadsoft@mtu.edu
- MERL@mtu.edu
- 906-487-2102

