



**GRAFFITI PROTECTION
HOLDING THE GRAFFITI TIDE WITH A
PAINT ROLLER AND AIRLESS SPRAYER**

**SIL-GUARD® WB Anti-Graffiti
Protective Coating**

OUTLINE

HISTORY AND PROLIFERATION OF GRAFFITI

**DIFFERENTIATING GRAFFITI FROM STREET
ART**

**NON-SACRIFICIAL GRAFFITI PROTECTION
COATINGS ON VARIOUS SUBSTRATES**

THE HISTORY OF GRAFFITI –IT IS NOT NEW

BCE:

Greek and Roman walls commonly etched with political messages or directions.



500 AD:

Vandals (Germanic tribe) sacked Rome for 14 days. Leading to the term “Vandalism” – to describe pointless destruction, especially of artwork

WWII – “Kilroy was here” – engraved in the WWII memorial in Washington, D.C.



1970 AD to Present:

Graffiti Unions & Street Artist acceptance in Art Galleries - Banksy

Punk & Skateboard Culture influencing graffiti

Circa 1994 Susan Farrell – www.graffiti.org

HURON RIVER TRAIL – ANN ARBOR, MI 2023



BOARDMAN RIVER BRIDGE – TRAVERSE CITY, MI 2023



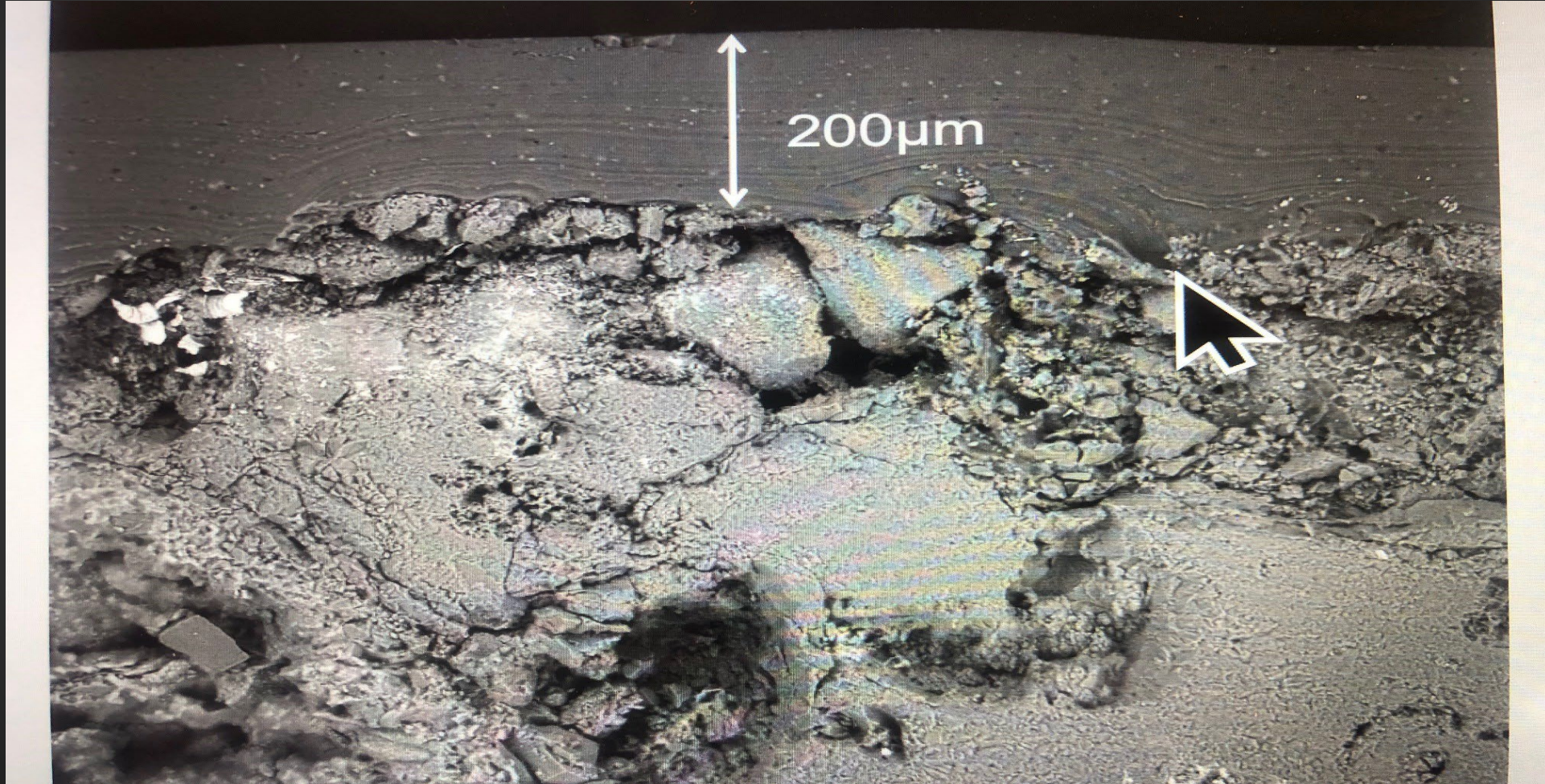
FREIGHT TRAIN GRAFFITI WRITERS – ALLOWED UTILIZING FREIGHT TRANSIT 1-800 NUMBERS TO TRACK THE TRAVEL ACROSS THE COUNTRY – MANISTEE MICHIGAN 2024



GRAFFITI ALLEY – ANN ARBOR, MI 2023 (CITY GRAFFITI WRITERS)

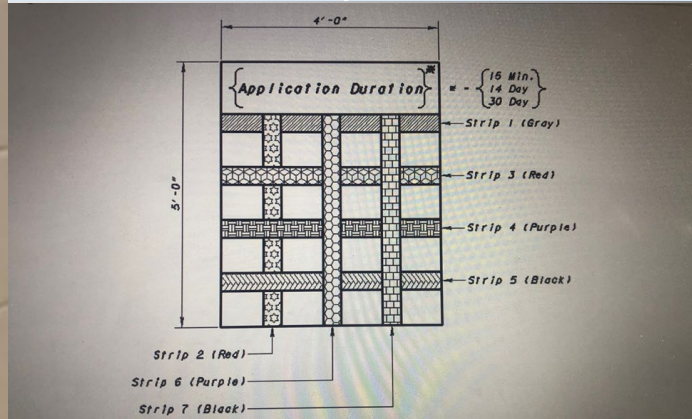


SIL-GUARD WB Film Thickness $200\ \mu\text{m} \cong 5\text{-}7\ \text{mils DFT @ } 50\% \text{ solids}$



SIL-GUARD WB GRAFFITI TESTING

Tested Paints for Ohio DOT	Paint	Color
	Krylon (epoxy)	Gray
	Rustoleum (gloss)	Red
	Rustoleum (flat)	Black
	Krylon (for metals)	Purple
	Permanent Marker	Black



Apply permanent marker lines to the coated concrete next to, not on, the paint stripes.

SIL-GUARD WB APPLICATION RECOMMENDATIONS

Application recommendations	Uneven surfaces (e.g. precast concrete)	Reduced Color Enhancement	Paints and Lacquers	Metal, Plastic, Wood
First Coat	SIL-GUARD WB 75 SF/gal 10 mils DFT @ 50% solids	SIL-GUARD WB 150 SF/gal 5 mils DFT @ 50% solids	SIL-GUARD WB 150 SF/gal 5 mils DFT @ 50% solids	SIL-GUARD WB 150 SF/gal 5 mils DFT @ 50% solids
Curing time 20°C, 50% RH	2 hours	2 hours	2 hours	2 hours
Second Coat	SIL-GUARD WB 75 SF/gal 10 mils DFT @ 50% solids	SIL-GUARD WB 75 SF/gal 10 mils DFT @ 50% solids	SIL-GUARD WB 150 SF/gal 5 mils DFT @ 50% solids	SIL-GUARD WB 75 SF/gal 10 mils DFT @ 50% solids
Curing time 20°C, 50% RH	2 hours	2 hours	2 hours	2 hours
Third Coat		SIL-GUARD WB 75 SF/gal 10 mils DFT @ 50% solids	SIL-GUARD WB 75 SF/gal 10 mils DFT @ 50% solids	SIL-GUARD WB 150 SF/gal 5 mils DFT @ 50% solids *Optional

Cleaned with 1200 psi power washer



GRAFFITE PROTECTION PROPERTIES FOR DURABLE LIFECYCLE

When applying film forming coatings on grade or below grade structures be aware of hydrostatic pressure:

Select coatings that are vapor permeable \geq to 20 US Perm per ASTM E96

Elongation \geq 500% per ASTM D412

VOC: Water-based systems $<$ 50 g/L

Shore A Hardness: \geq 50

SIL-GUARD WB SURFACE PREPARATION



Make repairs to cracks and damage first!

CSP 1-3 for Non-sacrificial durable coating

SIL-GUARD WB CLEAR – GRAFFITI REMOVAL WITH COLD WATER ONLY!



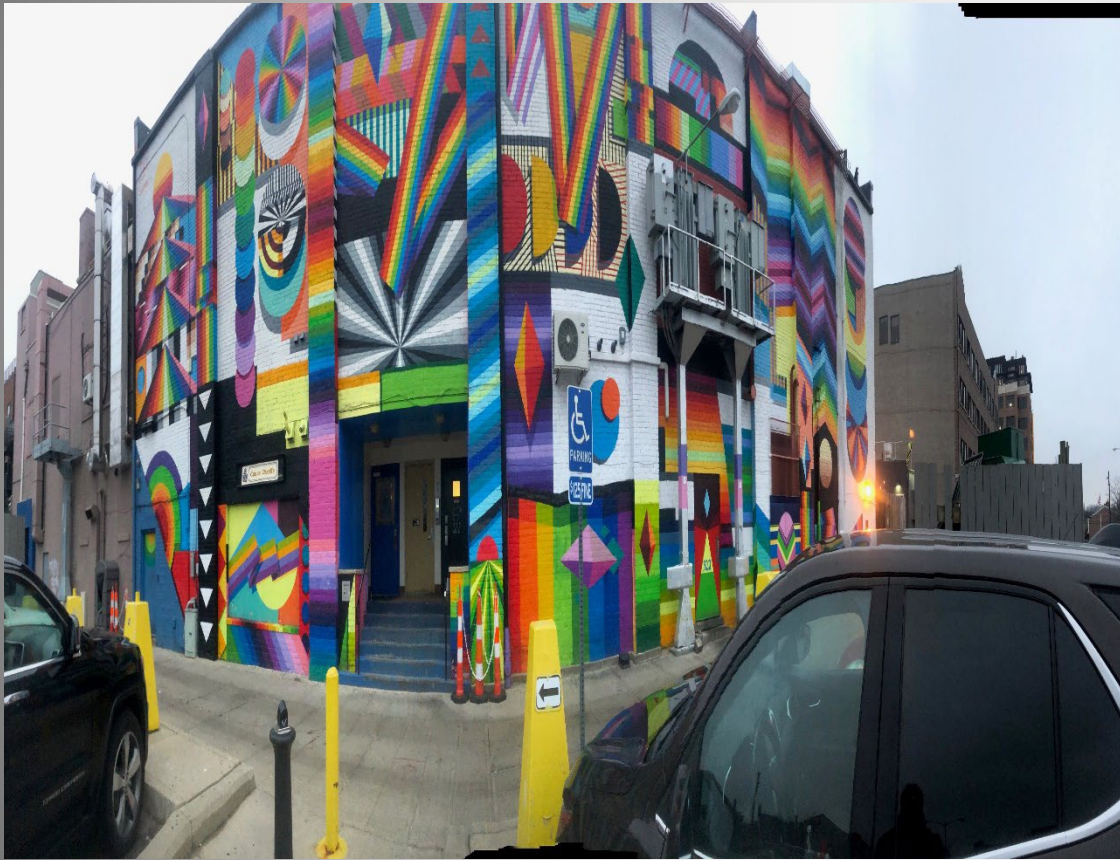
wet sponge
or
tissue



cold water
only



SIL-GUARD WB CLEAR – PROVIDES ROBUST UV RESISTANCE AND COLOR STABILITY FOR MURALS AND STREET ART



1st Street Ann Arbor



The Spot, Lafayette, IN

SIL-GUARD WB CLEAR (SILICONE/SILOXANE EMULSION) – PROVIDES UV PROTECTION FOR STREET ART



Fulton Street / 131 Grand Rapids

QUESTIONS?

Thank you for your attention!



Brad Ehle

Advanced Chemical Technologies

(317) 319-3792

Marquette, MI