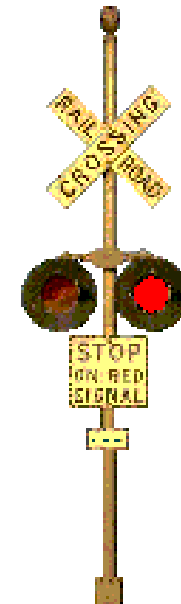


# LOCAL GRADE CROSSING PROGRAM

## WHAT WE DO

- ▶ Section 130 Warning Device Enhancements
- ▶ Grade Crossing Closure Incentives & Awards
- ▶ 60/40 Grants for Local Crossing Surface Work
- ▶ Local Road Projects: Railroad Coordination



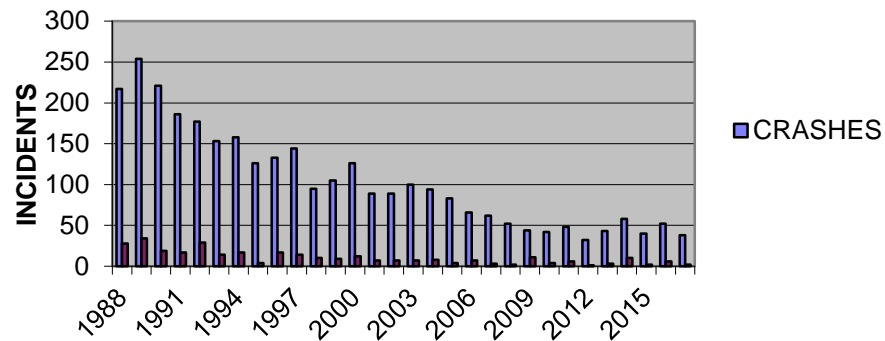
# Local Grade Crossing Program

## WARNING DEVICE ENHANCEMENTS

- ▶ 4400 local crossings
- ▶ 2100+ with no lights/gates
- ▶ 40-50 projects/year
- ▶ Importance of ADT's!!!



30-YEAR HIGHWAY-RAILROAD CROSSING  
CRASHES & FATALITIES



- ▶ Federal/State funding
- ▶ Record low crashes
- ▶ Record low fatalities
- ▶ 90% Crash reduction

# Local Grade Crossing Program

## CASE STUDY EXAMPLE

### Crawford County: Four Mile Road

#### 2014 Data on-file

ADT = 150 from 1997

Trains per day = 1.7

Exposure Score = 205

Risk Ranking = 510/802



#### 2016 Road Project

ADT = 2355 from 2016

Trains per day = 1.7

Exposure Score = 3203

Risk Ranking = 24/802

# Local Grade Crossing Program

## ROADWAY CLOSURE PROJECTS

- ▶ Up to \$150,000 closure incentive
- ▶ Multiple closure bonus available
- ▶ Awards calculated per crossing
- ▶ Local choices, local investments

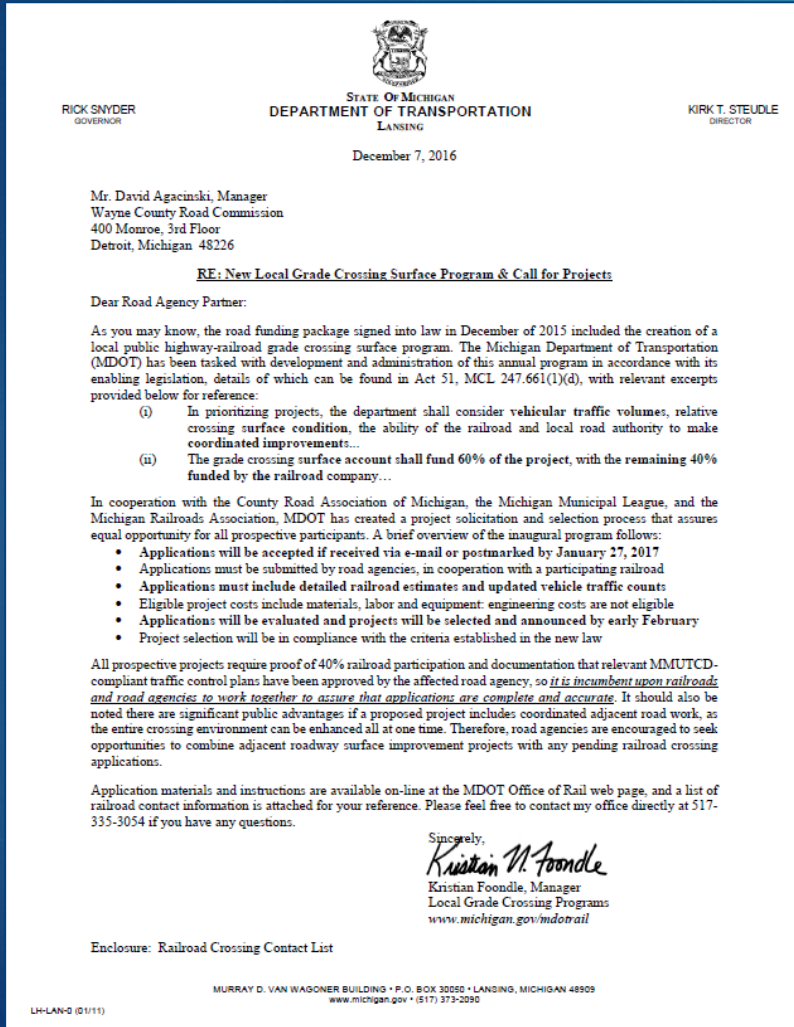


- ▶ 62 Crossings closed
- ▶ \$6.1 Million invested

# Local Grade Crossing Program

## NEW 60/40 SURFACE FUNDING

5



- ▶ \$3M Annual Program
- ▶ Eligible to Road Agencies
- ▶ 100 Applications/year
- ▶ 55 Projects/year
- ▶ August 2019  
Next Call for Projects

# Local Grade Crossing Program

## FUNDING SUPPORT FOR ROAD PROJECTS

6



- ▶ Federal-Aid eligible work elements
- ▶ Incorporate work into project budget
- ▶ Locally-funded road projects
- ▶ Requires Diagnostic Study Team Review

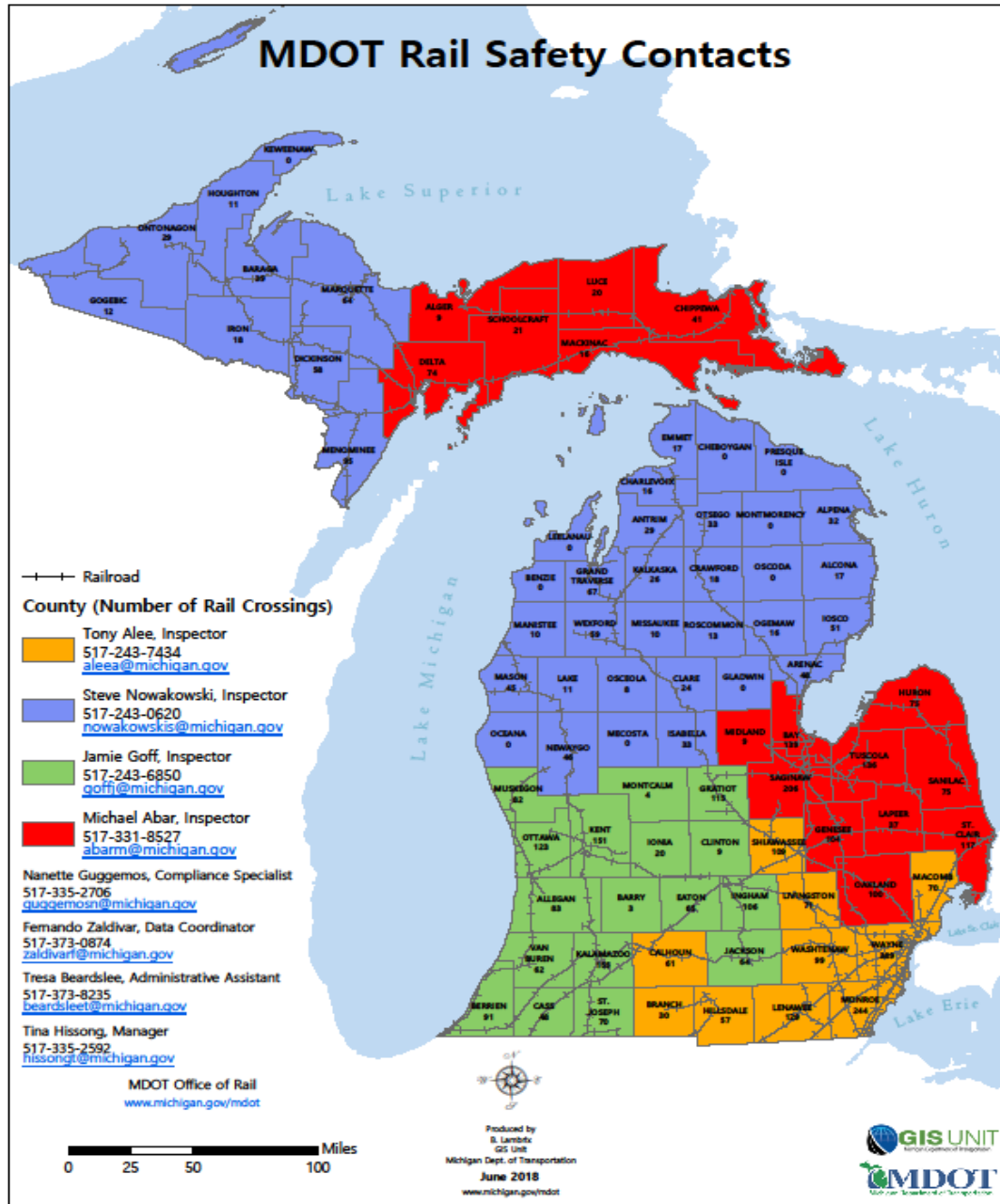
# RAIL SAFETY SECTION

## WHAT WE DO

- ▶ On-Site Crossing Inspection Reviews, approx. 2,300 crossings per year
- ▶ Diagnostic Study Team Reviews (DSTRs)
- ▶ Assist Railroads & Road Authorities with public at-grade crossing issues



# Rail Safety Section Statewide Coverage





# When To Contact Us & How

- ▶ When a road or trail project will take place within 250 feet of a public at-grade railroad crossing.
- ▶ Obtain the 1425 form from the MDOT Website ([Michigan.gov/MDOTRail](https://www.michigan.gov/MDOTRail)) to request a Diagnostic Study Team Review.
- ▶ Complete the form and return to me.



## What is a Diagnostic Study Team Review (DSTR)?

---

A DSTR team consists of knowledgeable representatives from MDOT, the Road Authority and the Railroad.

---

The MDOT Railroad Safety Inspector facilitates.

---

The Team reviews the railroad crossing configuration, including the surrounding roadway, and the road/trail project specifics to determine if safety enhancements are warranted.

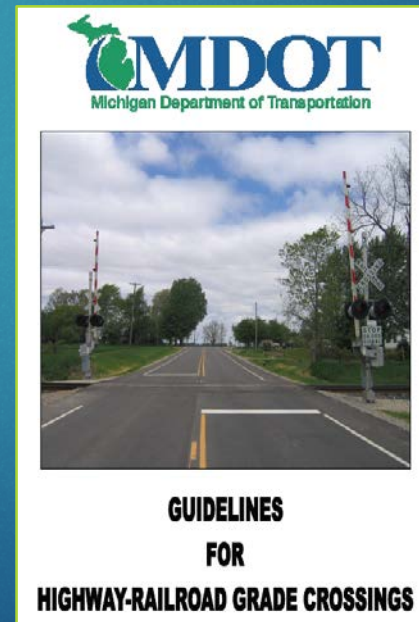
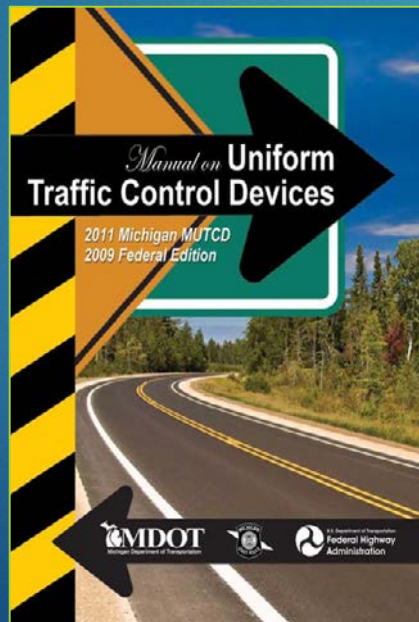
# DSTRs for Road Projects

- ▶ Are held when changes will be made to the width, height or configuration of the roadway.
- ▶ When traffic flow or volumes will change during construction.
- ▶ If changes to the roadway will increase permanent traffic volumes.
- ▶ If crossing surfaces need to be addressed.

# RAIL Safety Guidance Documents

12

- ▶ Michigan Railroad Code (Public Act 354 of 1993)
- ▶ Michigan Manual of Uniform Traffic Control Devices (Part 8 & 9)
- ▶ Guidelines for Highway-Railroad Grade Crossings
- ▶ All are located at [Michigan.gov/MDOTRail](http://Michigan.gov/MDOTRail)





**Thank you!**  
**Please Contact Us With Questions!**

Kris Foondle, Local Grade Program Manager  
(517) 335-3054  
[foondlek@michigan.gov](mailto:foondlek@michigan.gov)

Tina Hissong, Rail Safety Manager  
(517) 335-2592  
[hissongt@michigan.gov](mailto:hissongt@michigan.gov)

Michigan.gov/MDOTRail