



**Office of Rail: Local Programs  
County Engineer's Workshop  
February 1, 2017**

# LOCAL GRADE CROSSING PROGRAM ROADWAY CLOSURE PROJECTS

- Up to \$150K incentives
- Multiple closure bonuses
- Local choices & investments



- 55 Crossings closed
- \$5.49 Million invested
- Average \$100,000

# LOCAL GRADE CROSSING PROGRAM NEW SURFACE FUNDING



STATE OF MICHIGAN  
DEPARTMENT OF TRANSPORTATION  
LANSING

RICK SNYDER  
GOVERNOR

KIRK T. STEUDLE  
DIRECTOR

December 7, 2016

Mr. David Agacinski, Manager  
Wayne County Road Commission  
400 Monroe, 3rd Floor  
Detroit, Michigan 48226

**RE: New Local Grade Crossing Surface Program & Call for Projects**

Dear Road Agency Partner:

As you may know, the road funding package signed into law in December of 2015 included the creation of a local public highway-railroad grade crossing surface program. The Michigan Department of Transportation (MDOT) has been tasked with development and administration of this annual program in accordance with its enabling legislation, details of which can be found in Act 51, MCL 247.661(1)(d), with relevant excerpts provided below for reference:

- (i) In prioritizing projects, the department shall consider vehicular traffic volumes, relative crossing surface condition, the ability of the railroad and local road authority to make coordinated improvements...
- (ii) The grade crossing surface account shall fund 60% of the project, with the remaining 40% funded by the railroad company...

In cooperation with the County Road Association of Michigan, the Michigan Municipal League, and the Michigan Railroads Association, MDOT has created a project solicitation and selection process that assures equal opportunity for all prospective participants. A brief overview of the inaugural program follows:

- Applications will be accepted if received via e-mail or postmarked by January 27, 2017
- Applications must be submitted by road agencies, in cooperation with a participating railroad
- Applications must include detailed railroad estimates and updated vehicle traffic counts
- Eligible project costs include materials, labor and equipment; engineering costs are not eligible
- Applications will be evaluated and projects will be selected and announced by early February
- Project selection will be in compliance with the criteria established in the new law

All prospective projects require proof of 40% railroad participation and documentation that relevant MMUTCD-compliant traffic control plans have been approved by the affected road agency, so *it is incumbent upon railroads and road agencies to work together to assure that applications are complete and accurate*. It should also be noted there are significant public advantages if a proposed project includes coordinated adjacent road work, as the entire crossing environment can be enhanced all at one time. Therefore, road agencies are encouraged to seek opportunities to combine adjacent roadway surface improvement projects with any pending railroad crossing applications.

Application materials and instructions are available on-line at the MDOT Office of Rail web page, and a list of railroad contact information is attached for your reference. Please feel free to contact my office directly at 517-335-3054 if you have any questions.

Sincerely,

Kristian Foondle, Manager  
Local Grade Crossing Programs  
[www.michigan.gov/mdorail](http://www.michigan.gov/mdorail)

Enclosure: Railroad Crossing Contact List

MURRAY D. VAN WAGONER BUILDING • P. O. BOX 30060 • LANSING, MICHIGAN 48909  
[www.michigan.gov](http://www.michigan.gov) • (517) 373-2090

LH-LAN-0 (01/11)

- New for 2017!
- \$3M Annual Program
- Eligible to Road Agencies
- 2017 Awards Pending
- 2018 Applications

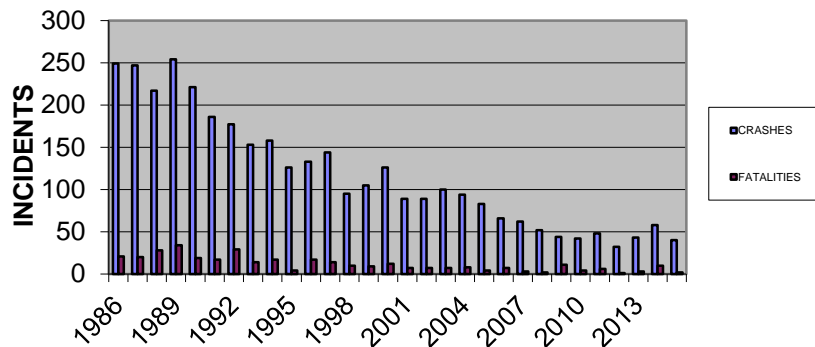


# LOCAL GRADE CROSSING PROGRAM WARNING DEVICE ENHANCEMENTS

- 4400 local crossings
- 2200+ with lights/gates
- 40-50 projects/year
- Average \$225,000



30-YEAR HIGHWAY-RAILROAD CROSSING  
CRASHES & FATALITIES



- Federal/State funding
- Record low crashes
- Record low fatalities
- 90% Crash reduction

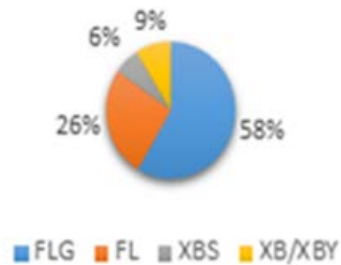
# ***LOCAL GRADE CROSSING PROGRAM WARNING DEVICE ENHANCEMENTS***



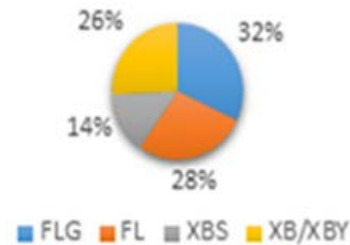
- Federal Section 130 Program
- State of Michigan Railroad Code
- FHWA-approved procedures

# LOCAL GRADE CROSSING PROGRAM WARNING DEVICE ENHANCEMENTS

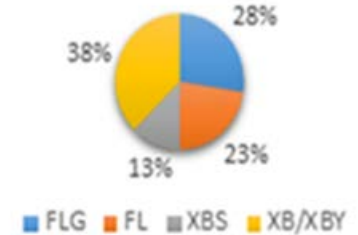
RELATIVE RISK



CRASHES 2011-2015



CRASHES - 2015



- Crash Profiles by Warning Type
- 5 Year Trends
- Most Recent Experience
- DSTR Tools



**Rail Safety Section – Regulatory  
County Engineer’s Workshop  
February 1, 2017**



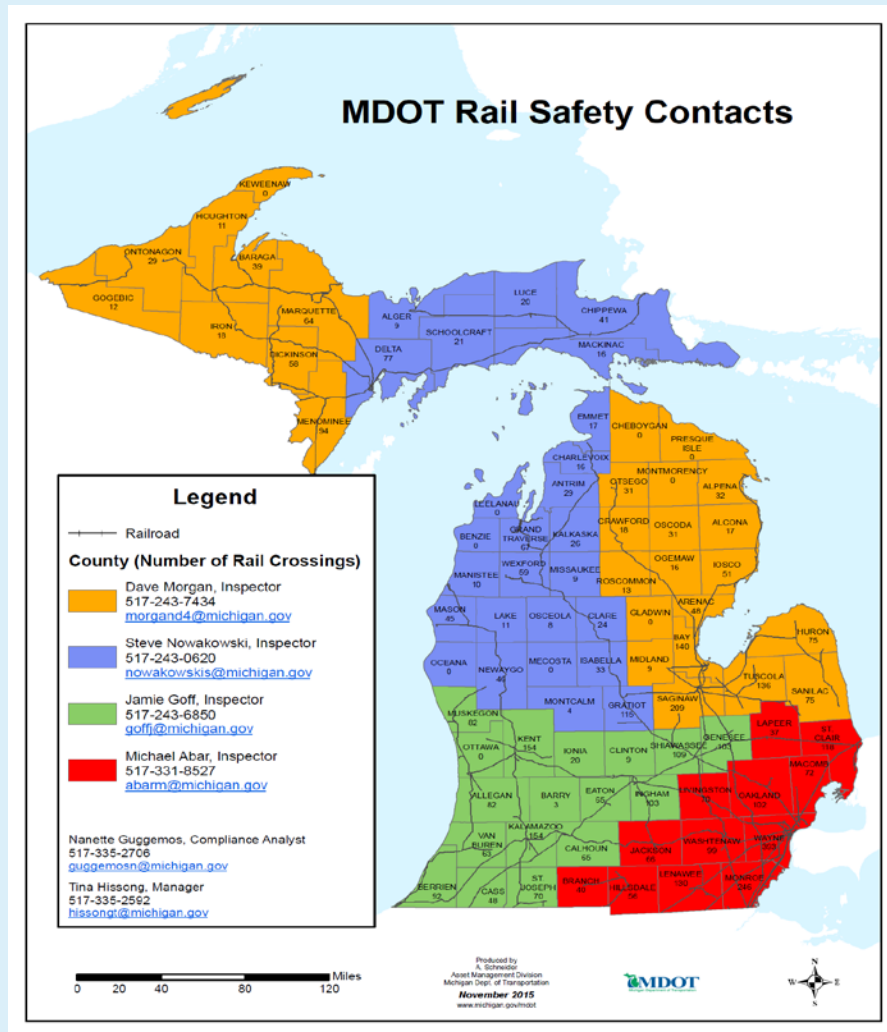
# RAIL SAFETY SECTION STATEWIDE COVERAGE

## Rail Safety Section

Jeannine Barnett  
Administrative Assistant  
(517) 373-8235  
barnettj@michigan.gov

Fernando Zaldivar  
Data Analyst  
(517) 373-0874  
zaldivarf@michigan.gov

[www.michigan.gov/mdotrail](http://www.michigan.gov/mdotrail)





# ***RAIL SAFETY SECTION***

## ***WHAT WE DO***

- **On Site Inspections**  
Review approx. 2,300 crossings per year
- **Diagnostic Study Team Reviews (DSTRs)**  
For road projects road authorities must submit a MDOT-1425 request form
- **Orders & Enforcement**  
My advice, don't get a call from Nanette!

# RAIL SAFETY SECTION

## WHAT WE NEED YOU TO DO

- Submit updated ADTs
- Provide updates on contact info
- Participate in the DSTR process
- Complete Ordered work on time
- **Read our correspondence!! (please)**



# RAIL SAFETY SECTION

## WHAT YOU NEED TO KNOW

### *Exempt Sign Changes*

- ❑ School buses and vehicles transporting hazardous material can utilize Exempt signs at crossings
- ❑ MDOT approval must be granted to use Exempt signs (DSTR process)



R15-3P



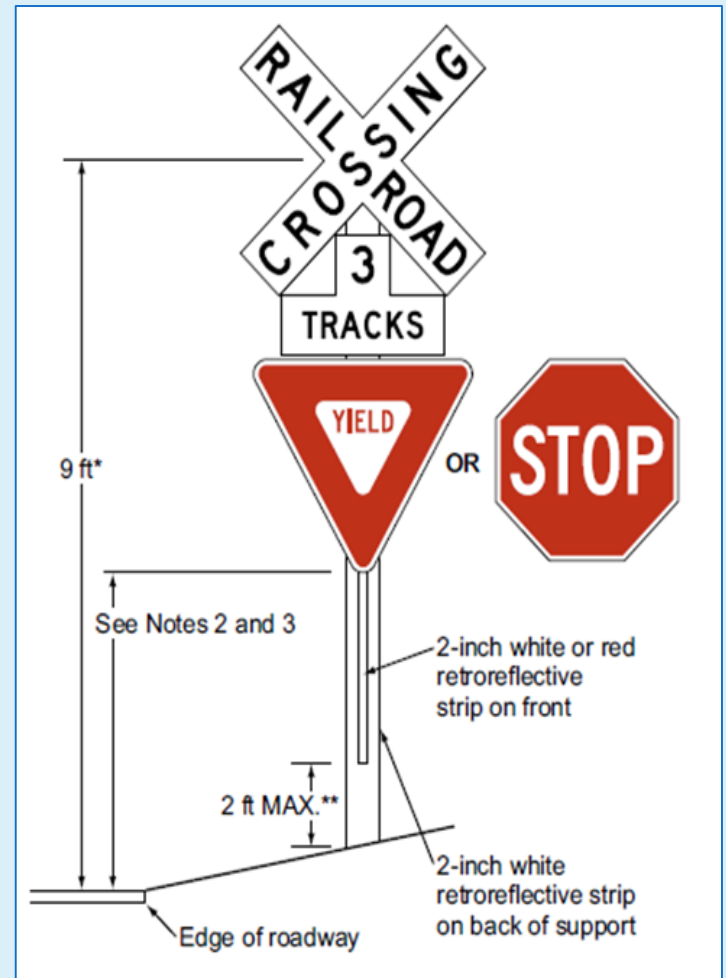
W10-1aP

# RAIL SAFETY SECTION

## WHAT YOU NEED TO KNOW

### FRA Mandate

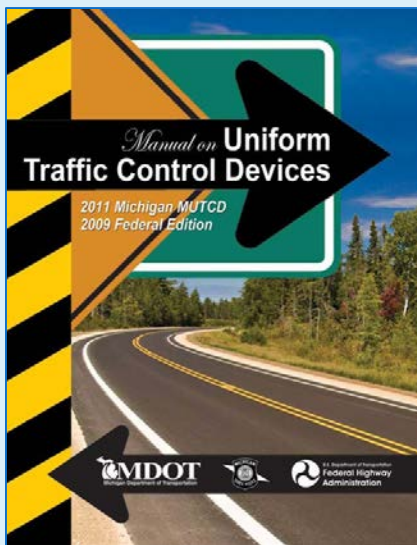
- All crossbuck only crossings must have Yield or Stop signs in place by 12/31/2019
- Road authorities are the responsible party to install the signs





# OFFICE OF RAIL GUIDANCE & SUPPORT

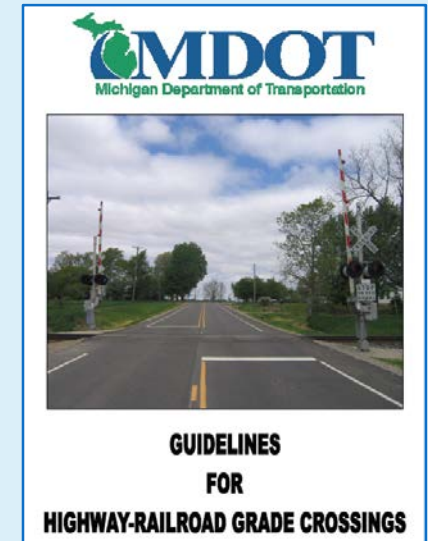
- Michigan Manual of Uniform Traffic Control Devices
- Guidelines for Highway-Railroad Grade Crossings
- Railroad Code (Public Act 354 of 1993)

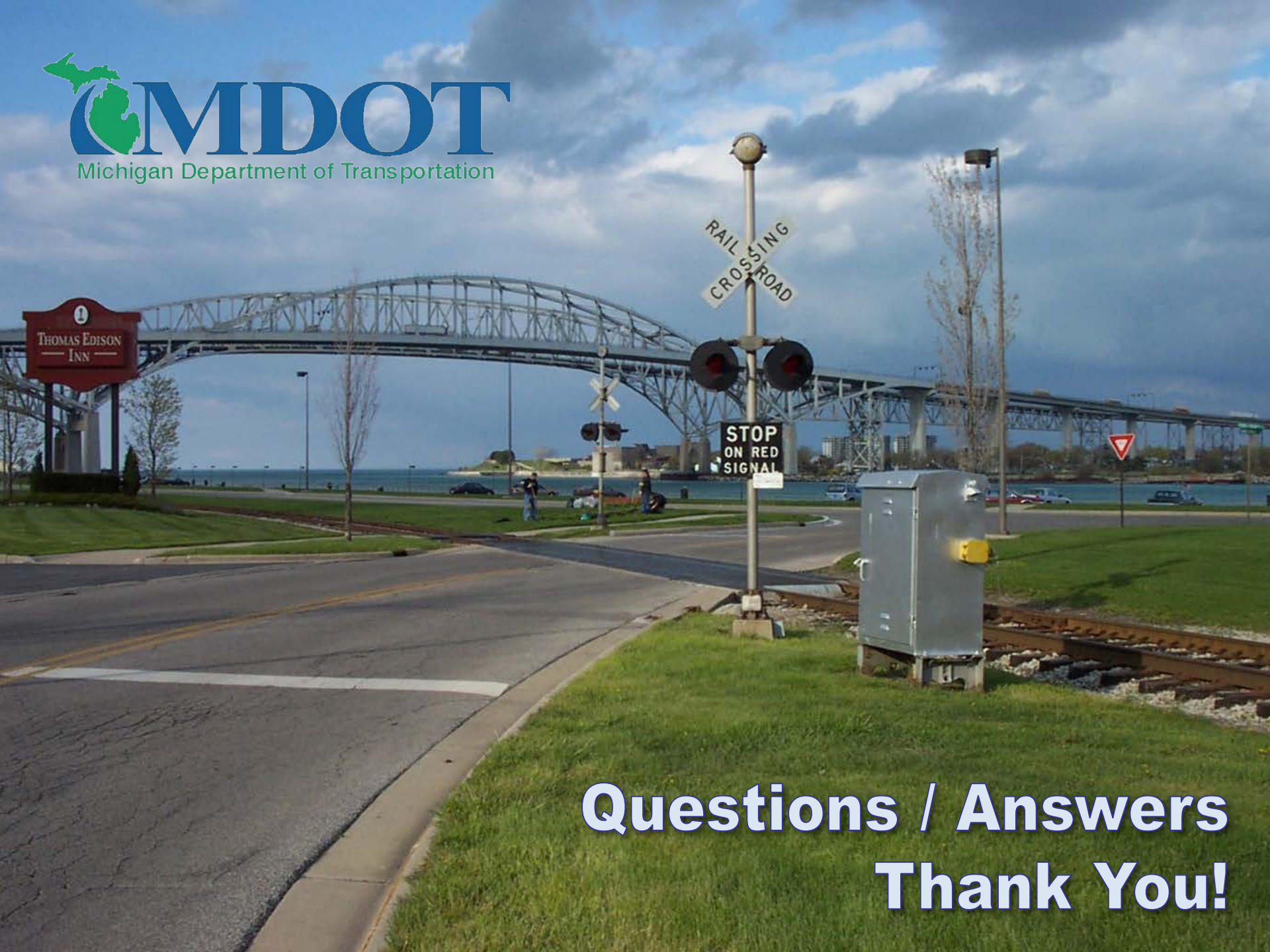


## CONTACTS

- Rail Safety  
Tina Hissong, 517-335-2592
- Local Grade Crossings  
Kris Foondle, 517-335-3054

[www.michigan.gov/mdotrail](http://www.michigan.gov/mdotrail)





**Questions / Answers  
Thank You!**