

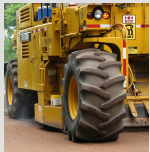
# Transportation Asset Management for Local Officials

## Everything you need to know about managing local roads

Each of us applies the basic principles of asset management every day to manage decisions relating to our businesses, homes, automobiles, and personal possessions. In the Introduction to Transportation Asset Management workshop, we will address asset management issues faced specifically by elected official, who make decisions about roads for cities, townships, and counties. No engineering background is necessary.

This workshop will provide an introduction to several core components:

- The importance of asset management—roads included
- Overview of transportation asset management principles
- Pavement deterioration basics—stay ahead of the curve
- Preventive maintenance for asphalt roads—a mix of fixes
- Selecting projects to maximize return on investment—the right treatment
- Lowering costs by using an asset management plan



Crush and Shape



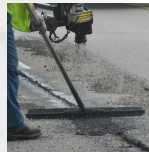
Ultrathin Overlay



Crack Seal



Mill and Overlay



Durapatch



Chip Seal

**January 24, 2019**

## **Berrien County Road Department**

Event location: Berrien County Health Department  
2149 East Napier Avenue  
Benton Harbor, Michigan 49022

1:00 – 4:00 p.m. ET

► 12:45 p.m. sign-in

## **Registration\***

No fee to attend. The Michigan Transportation Asset Management Council (TAMC) covers the training session registration costs.

Register at: <http://ctt.nonprofitsoapbox.com/2019tamlo-berrien>

Questions? E-mail [ctt@mtu.edu](mailto:ctt@mtu.edu)

*\* Required for fulfillment of continuing education. The Center for Technology & Training's (CTT) continuing education policy is available at [ctt.mtu.edu/ContinuingEducation](http://ctt.mtu.edu/ContinuingEducation).*

*No-shows or cancellations within three business days of the session will be charged the full registration fee. Substitutions will be accepted.*



Michigan  
Transportation Asset  
Management Council



Center for  
**Technology & Training**