



City of Novi

Department of Public Works

LTAP Winter Operations Conference
October 2019



Matt Wiktorowski, Field Operations Senior Manager



Assets Managed

| ASSET CATEGORY | QUANTITY | UNITS |
|-----------------------------------|----------|-------|
| Sidewalks | 293 | Miles |
| Local Streets | 161/312 | CM/LM |
| Major Streets | 44/113 | CM/LM |
| County Roads Maintenance (Winter) | 24/87 | CM/LM |
| Total Road Maintenance (Winter) | 230/514 | CM/LM |
| Total Road Maintenance (Summer) | 205/425 | CM/LM |
| Traffic Control Signs | 2,592 | Each |
| Regulated Bridges | 10 | Each |
| Streetlights | 742 | Each |
| Water Main | 359 | Miles |
| Hydrants | 4,344 | Each |
| Gate Valves | 3,677 | Each |
| Water Service Connections | 13,530 | Each |
| Sanitary Sewer Main | 285 | Miles |
| Storm Drain Structures | 20,277 | Each |
| Regulated Dams | 4 | Each |
| Trees (ROW, Parks) | 39,354 | Each |
| Fleet Vehicles & Equipment | 197 | Each |

DPW FY 2018/19 Budget

| Fund | Operating | Capital Outlay | Total |
|--|-------------------|-------------------|-------------------|
| 101 General Fund | 2,626,097 | 805,351 | 3,431,448 |
| 202, 203, 204 Major/ Local/ Municipal Street Funds | 3,768,623 | 6,467,993 | 10,236,616 |
| 209 Tree Fund | 1,438,290 | - | 1,438,290 |
| 210 Drain Fund | 868,509 | 828,665 | 1,697,174 |
| 400 Capital Improvement Program (CIP) Fund | - | 1,797,163 | 1,797,163 |
| 592 Water & Sewer Fund | 24,461,414 | 4,365,857 | 28,827,271 |
| TOTAL BUDGET | 36,931,556 | 20,733,022 | 57,664,578 |

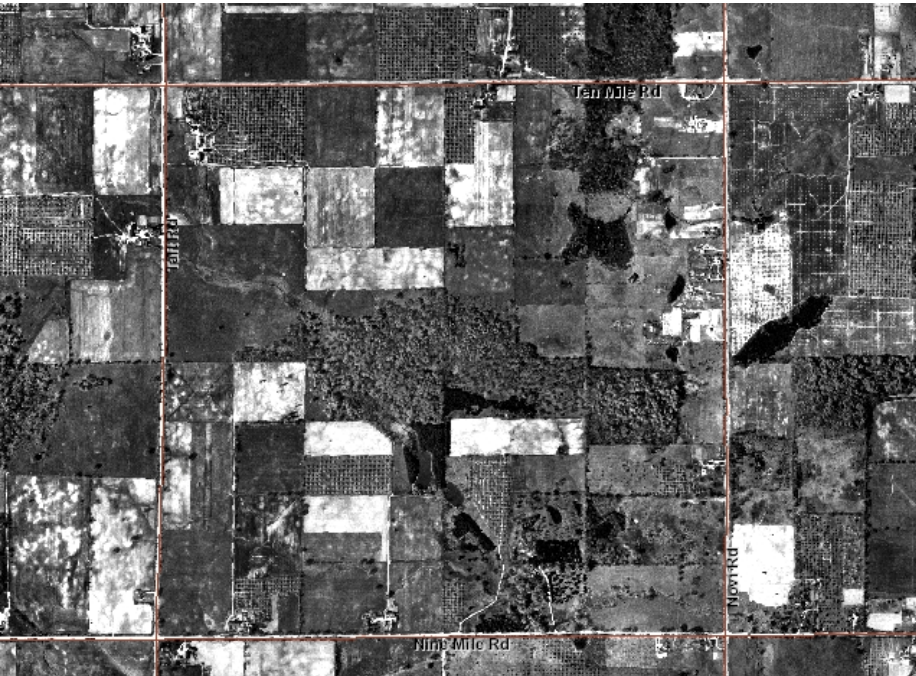
Winter Maintenance

- **Salting & Snow Removal – Material Logs and Route Assignments**
 - County Roads (87 Lane Miles)
 - Major Roads (113 Lane Miles)
 - Local Roads (312 Lane Miles)
- **24/7 Emergency Response**
- **Restoration and Enhancement**
- **Goal: To Reduce Costs, Protect the Environment, and Preserve Worker Safety without Jeopardizing Public Safety.**
 - A. Salt Pre-wetting and Anti-Icing
 - B. Brine Solutions
 - C. Implementation of Snow Removal Policy
 - D. Inter Governmental Agreements
 - E. Truck replacements & Tech Enhancement
 - F. Tracking Resident Concerns



DPS Operations and Maintenance

Taft Rd. to Novi Rd. – Nine Mile Rd. to 10 Mile Rd.



Then



Now

DPS Operations and Maintenance

Ten Mile Rd and Island Lake



Then



Now

Levels of Service



CITY COUNCIL

Mayor
David B. Lantry

Mayor Pro Tem
Bob East

Tony A. Margolis

Andrew Watson

Kathy Crawford

Dave Staudt

Justin Richter

City Manager
Clay J. Pausan

City Clerk
Maryanne Cornelius

RESOLUTION

**WINTER ROAD MAINTENANCE POLICY
CITY OF NOVI**

WHEREAS, the City of Novi has determined that it is desirable to adopt a policy for winter road maintenance on all public roads and streets in the City of Novi; and,

WHEREAS, adopting a formal policy is necessary to facilitate safe traveling conditions for motorists, reduce the likelihood of economic losses to the city and businesses, and to assist police, fire and emergency medical services in fulfilling their duties; and,

WHEREAS, the City of Novi must prioritize levels of service for winter road maintenance to reduce costs, protect the environment, and preserve worker safety without jeopardizing public safety;

NOW, THEREFORE, BE IT RESOLVED, that a Winter Road Maintenance Policy is hereby adopted in accordance with the following levels of service:

Level 1: Snowfall Less Than Four (4) Inches; No Accumulation of Ice
Major city and county roads will be plowed and salted on a continuous basis as needed to keep the pavement as bare as possible at all times. Once major roads are cleared, local roads will be plowed and spot-salted on a continuous basis as needed at steep grades/sharp curves and at intersections only. During normal weekday working hours, local roads will be cleared to keep the pavement as bare as possible.

Level 2: Snowfall of Four (4) Inches or More; Any Accumulation of Ice
Major city and county roads will be plowed and salted on a continuous basis as needed to keep the pavement as bare as possible at all times. Once major roads are cleared, local roads will be plowed and salted on a continuous basis as needed to keep the pavement passable at all times during a storm. Crews will continue to work on local roads on a continuous basis to achieve bare pavement once the storm has ended.

CERTIFICATION

I hereby certify that the foregoing is a true and complete copy of a Resolution adopted by the City Council of the City of Novi at a regular meeting held this 7th day of December, 2009.

Maryanne Cornelius, City Clerk

City of Novi
43175 W. Tim Mile Road
Novi, Michigan 48375
248.347.2400
248.347.2677 fax
novi@novi.org

Level 1 – Snowfall less than (4) Inches; No Accumulation of Ice

Major city and county roads will be plowed and salted on a continuous basis as needed to keep the pavement as bare as possible at all times. Once major roads are cleared neighborhood roads will be cleared during normal weekday working hours. (No Overtime for Neighborhoods)

Level 2 – Snowfall of (4) Inches or More; Any Accumulation of Ice

Major city and county roads will be plowed and salted on a continuous basis as needed to keep the pavement as bare as possible at all times. Once major roads are cleared neighborhood roads will be plowed on a continuous basis. (Overtime for Neighborhoods)



Performance Data

WINTER MAINTENANCE PERFORMANCE DATA For Winter Seasons 2007/2008 Through 2018/2019

| Winter Season | Number of Events | Inches of Snowfall | Citizen Complaints | | Traffic Crashes | | Salt Use | | Liquids Use | | Labor | | Roadway Contractual Assistance | |
|------------------------------------|------------------|--------------------|--------------------|------------------------------|-----------------|---------------------------|-------------------|-------------------------------------|---------------------------|-------------------------------------|-------------------|------------------------------|--------------------------------|------------------------|
| | | | Number | Average Complaints Per Event | Number | Average Crashes Per Event | Tons of Salt Used | Average Tons of Salt Used Per Event | Gallons of Liquid Applied | Average Gallons of Liquid Per Event | Total Labor Costs | Average Labor Cost Per Event | Total Cost | Average Cost Per Event |
| 2007-2008 | 47 | 71.7 | 221 | 4.70 | 212 | 4.51 | 12,621 | 269 | N/A | N/A | \$ 405,787 | \$ 8,634 | \$ - | \$ - |
| 2008-2009 | 33 | 65.7 | 148 | 4.48 | 163 | 4.94 | 9,868 | 299 | N/A | N/A | \$ 420,031 | \$ 12,728 | \$ - | \$ - |
| 2009-2010 | 33 | 43.7 | 58 | 1.76 | 116 | 3.52 | 6,932 | 210 | N/A | N/A | \$ 291,856 | \$ 8,844 | \$ - | \$ - |
| 2010-2011 | 63 | 67.2 | 324 | 5.14 | 254 | 4.03 | 8,653 | 137 | 29,375 | 466 | \$ 294,398 | \$ 4,673 | \$ - | \$ - |
| 2011-2012 | 24 | 24.0 | 10 | 0.42 | 29 | 1.21 | 4,665 | 194 | 38,520 | 1,605 | \$ 93,548 | \$ 3,898 | \$ - | \$ - |
| 2012-2013 | 26 | 41.3 | 67 | 2.58 | 42 | 1.60 | 3,395 | 131 | 67,630 | 2,601 | \$ 156,082 | \$ 6,003 | \$ - | \$ - |
| 2013-2014 | 51 | 77.25 | 426 | 8.35 | 77 | 1.51 | 6,056 | 119 | 37,261 | 731 | \$ 360,909 | \$ 7,077 | \$ - | \$ - |
| 2014-2015 | 35 | 66.4 | 206 | 5.89 | 88 | 2.51 | 4,775 | 136 | 49,931 | 1,427 | \$ 167,173 | \$ 4,776 | \$ - | \$ - |
| 2015-2016 | 26 | 47.15 | 222 | 8.54 | 58 | 2.23 | 4,363 | 168 | 53,617 | 2,062 | \$ 127,105 | \$ 4,889 | \$ - | \$ - |
| 2016-2017 | 25 | 29.62 | 232 | 9.28 | 48 | 1.92 | 3,687 | 147 | 53,862 | 2,154 | \$ 125,021 | \$ 5,001 | \$ 48,265 | \$ 1,931 |
| 2017-2018 | 31 | 57.05 | 415 | 13.39 | 120 | 3.87 | 5,770 | 186 | 64,107 | 2,068 | \$ 278,107 | \$ 8,971 | \$ 55,250 | \$ 1,782 |
| 2018-2019 | 31 | 30.9 | 150 | 4.84 | 62 | 2.00 | 4,778 | 154 | 0 | 0 | \$ 174,577 | \$ 5,632 | \$ 42,457 | \$ 1,370 |
| Historical Averages (07/08-18/19): | 35 | 51.8 | 207 | 5.78 | 106 | 2.82 | 6,297 | 179 | 43,811 | 1,457 | \$ 241,216 | \$ 6,760 | \$ 48,657 | \$ 1,694 |

2018-2019 Complaint Detail

| | | |
|-----------------------------|----|---|
| Driveway Plowed In | 6 | |
| Lawn Damage | 9 | |
| Mailbox Hit | 21 | |
| Not Close Enough to Curb | 9 | |
| Not Close Enough to Mailbox | 5 | |
| Road Missed | 11 | |
| Sidewalk Plowed In | 6 | |
| General Concern | 83 | (i.e. When will you be in my neighborhood, can you salt my street again etc.) |

Field Operations: Questions & Answers

Matt Wiktorowski

mwiktorowski@cityofnovi.org

248-735-5640

