



Gravel Road Basics for Local Officials

Everything you need to know about managing and maintaining gravel roads

Each of us applies the basic principles of asset management every day to manage decisions relating to our businesses, homes, automobiles, and personal possessions. In the Gravel Road Basics workshop, we will address asset management issues faced specifically by transportation and local officials who make decisions about roads for cities, counties, townships, and villages. No engineering background is necessary.

This workshop will provide an introduction to several core components:

- Importance of gravel roads for Michigan's transportation network
- Basics of gravel road construction and materials
- Common distresses that gravel roads experience
- Methods for maintaining gravel roads
- Impact of drainage systems on gravel roads
- Using the Inventory-based Rating™ System to manage gravel road assets

Month 00, 2020

Your Agency Location

Street Address for Location

City, Michigan 40000

7:00 p.m. – 9:00 p.m. (6:30 p.m. if needed)

Registration*

No fee to attend. The Michigan Transportation Asset Management Council and Your Agency will cover the session costs.

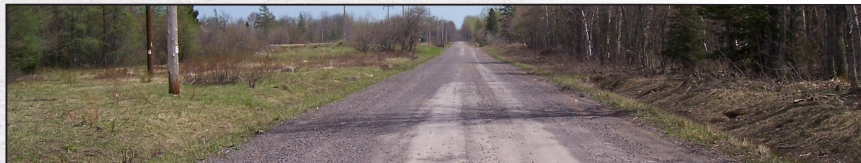
Questions? Visit <http://cctt.mtu.edu/2020gravello-youragency>

*Registration fee: \$200. The Center for Technology & Training's cancellation policy is available at cctt.mtu.edu/ContinuingEducation. No-shows and cancellations within three business days of the session will be charged the full registration fee; substitutions will be accepted.

**Interested in hosting a session?
Complete the request form at
cctt.mtu.edu/training-request
today!**

Instructor

Pete Torola, PE, is a research engineer with the Center for Technology & Training. He has over 15 year' experience in the transportation field. Torola graduated in 2001 from Michigan Technological University and is a licensed professional engineer in Michigan and Illinois.



Michigan
Transportation Asset
Management Council



Center for
Technology & Training